



NOT FOR PUBLICATION UNTIL 09:30 ON 30 JULY 2007

Lending to individuals: June 2007

The increase in **total net lending to individuals** in June (£10.4 billion) was higher than the increase in May and the previous six-month average (Table A). The twelve-month growth rate was unchanged from May at 10.2%. The three-month annualised growth rate fell by 0.1 percentage points to 9.2%.

Within the total, the increase in **net lending secured on dwellings** (£9.6 billion) was above the increase in May and the previous six-month average (Table A). The twelve-month growth rate was unchanged from May at 11.2%. The three-month annualised growth rate fell, by 0.1 percentage points to 10.2%. The **number of loans approved for house purchase** (114,000) was unchanged from May; those for **remortgaging** (102,000) and **other purposes** (72,000) were lower than in May (Table B).

The increase in **net consumer credit** in June (£0.9 billion) was in line with that in May (Table A). **Net credit card lending** rose by £0.2 billion compared with a fall of £0.2 billion in May. **Net other loans and advances** rose by £0.7 billion (lower than the increase of £1.1 billion in May). The annual growth rate of consumer credit was unchanged from May at 5.2% and the three-month annualised growth rate increased by 0.4 percentage points to 4.2%.

Table A: Net lending to individuals ^(a)

Seasonally adjusted

		Total			Secured on dwellings			Consumer credit		
		Change £ billions	Growth rates Per cent		Change £ billions	Growth rates Per cent		Change £ billions	Growth rates Per cent	
			1m	12m		1m	12m		1m	12m
2007	Mar	10.3	0.8	10.5	9.6	0.9	11.5	0.7	0.3	5.8
	Apr	9.3	0.7	10.4	8.9	0.8	11.4	0.4	0.2	5.4
	May	9.6	0.7	10.2	8.8	0.8	11.2	0.9	0.4	5.2
	Jun	10.4	0.8	10.2	9.6	0.9	11.2	0.9	0.4	5.2
	Previous 6m average	10.3			9.5			0.8		
	Amounts outstanding	1 344.7			1 130.8			213.9		

(a) Data in **bold italics** are where the current estimate of the change differs by more than 0.2 per cent of the underlying level or the growth rate differs by 0.2 percentage points or more from the most recent published estimate. There are no revisions above the thresholds on this occasion.

Table B: Approvals secured on dwellings

Seasonally adjusted

		Total ^(a)		House purchase		Remortgaging		Other	
		Value	Number	Value	Number	Value	Number	Value	Number
		£ billions	000's	£ billions	000's	£ billions	000's	£ billions	000's
2007	Mar	31.2	288	16.2	113	12.6	102	2.2	73
	Apr	29.6	278	16.3	109	11.7	98	2.2	72
	May	32.7	298	17.2	114	13.8	110	2.3	74
	Jun	32.1	289	17.3	114	12.9	102	2.2	72
	Previous 6m average	31.5	295	16.4	115	12.8	105	2.3	76

(a) Owing to the method of seasonal adjustment of these series, they may not equal the sum of their component breakdown.

Chart 1: Growth rates of seasonally adjusted lending secured on dwellings

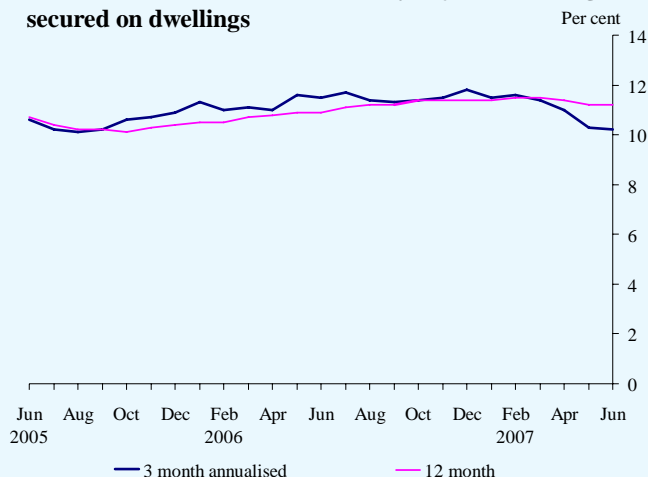
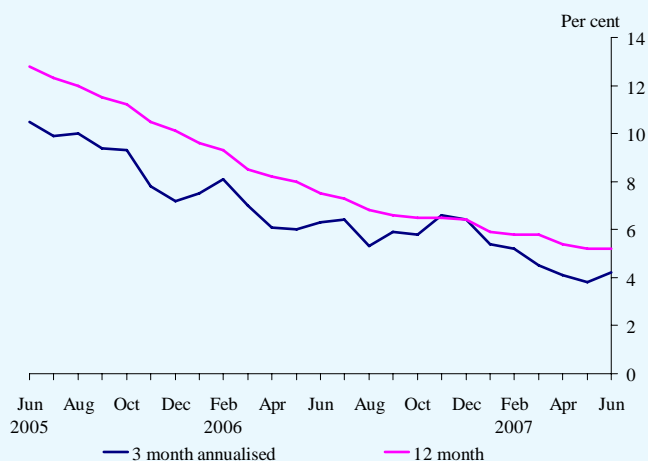


Chart 2: Growth rates of seasonally adjusted consumer credit



Notes to Editors

- 1 Full data on lending to individuals are available in Table A5 of Bank of England *Monetary and Financial Statistics* (www.bankofengland.co.uk/statistics/ms/current); these data are consistent with M4 lending, but are more comprehensive (as they include lending by institutions other than banks and building societies). Further information on the definitions of lending to individuals and calculations of growth rates are shown separately.
- 2 The consumer credit data include input from the Office for National Statistics. These data, and additional data not presented here, can be accessed free-of-charge from the Time Series data services at the National Statistics website www.statistics.gov.uk/statbase/tsdintro.asp
- 3 The Statistical Interactive Database provides long runs of statistical data with comprehensive search options and the ability to download in a variety of formats. This database can be accessed at www.bankofengland.co.uk/mfsd/iadb. The additional tables, shown separately, illustrate the codes for each series which can be used for downloading long runs from the database.