



NOT FOR PUBLICATION UNTIL 09:30 ON 20 JUNE 2006

Provisional estimates of broad money (M4) and credit (M4 lending): May 2006

Provisional figures for May indicate that **M4** rose by £8.5 billion, seasonally adjusted; below the average rise for the previous six months of £14.2 billion. The twelve-month growth rate fell to 11.8% from 13.1% in April.

M4 lending increased by £16.1 billion or 0.9%, seasonally adjusted, in May. The twelve-month growth rate fell to 12.4% from 12.7% (12.6%) in April.

M4 lending (excluding the effects of securitisations etc.) increased by £17.9 billion or 0.9%, seasonally adjusted, in May. The twelve-month growth rate fell by 0.3 percentage points to 14.3% in May.

(Previous growth rates published on 31 May 2006 are shown in brackets)

Table A: M4 and M4 lending ^(a)

Seasonally adjusted

		M4			M4 lending			M4 lending (exc. the effects of securitisations etc.)		
		Change £ billions	Growth rates Per cent		Change £ billions	Growth rates Per cent		Change £ billions	Growth rates Per cent	
			1m	12m		1m	12m		1m	12m
2006	Feb	14.6	1.1	12.5	19.7	1.2	10.5	22.9	1.3	12.4
	Mar	13.1	1.0	12.3	24.7	1.5	11.4	27.5	1.5	13.3
	Apr	17.1	1.3	13.1	29.5	1.7	12.7	35.1	1.9	14.6
	May	8.5	0.6	11.8	16.1	0.9	12.4	17.9	0.9	14.3

(a) Data in **bold italics** are where the current estimate of the change differs by more than 0.2 per cent of the underlying level or the growth rate differs by 0.2 percentage points or more from the most recent published estimate. Further details on revisions are available separately.

Chart 1: Growth rates of M4

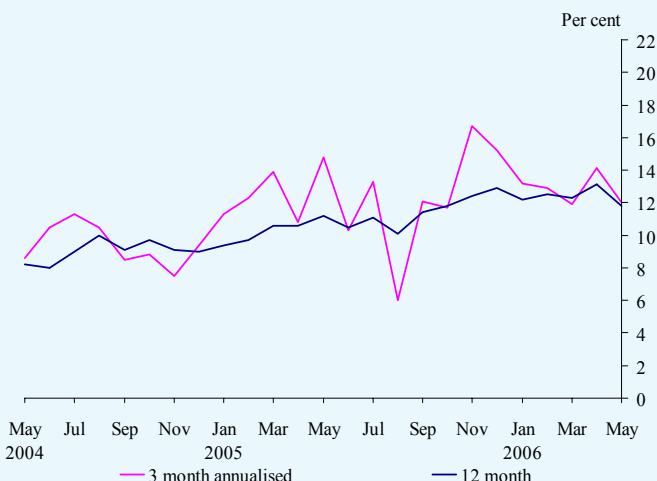


Chart 2: Growth rates of M4 lending (exc. the effects of securitisations etc.)

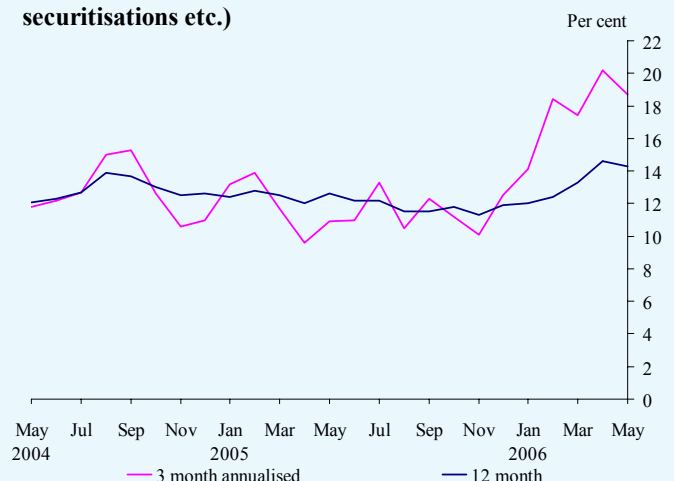


Table B: MFIs' balance sheet counterparts to changes in, and components of, M4 ^(a)£ billions ^(b)

Seasonally adjusted

	May	Latest 12 months
M4 lending	16.1	194.3
<i>of which: reverse repos</i>	2.4	24.8
Net foreign currency lending to M4 private sector	15.9	44.3
Net sterling lending to the public sector (inc. coin)	1.0	-6.7
Net foreign currency lending to public sector	-0.2	1.5
Net sterling lending to non-residents ^(c)	-0.8	2.6
Net foreign currency lending to non-residents	-45.5	-4.2
Net other assets	14.8	-85.6
Total: M4 change ^(d)	8.5	146.4
<i>of which: Retail deposits and cash</i>	3.8	78.3
<i>Wholesale deposits</i>	4.8	67.8
<i>of which: repos</i>	-2.3	21.3

(a) Details on the revisions to previous versions of this table are available separately.

(b) Data shown in £ millions are available on the Bank's Statistical Interactive Database - See Notes to Editors 3.

(c) This series has not been seasonally adjusted as, after examination, it was found not to be significantly seasonal. This series will, however, be reviewed for seasonality along with all other series on a regular basis.

(d) Owing to the method of the seasonal adjustment, M4 may not equal the sum of its components or counterparts. Residuals can be found on the Bank's Statistical Interactive Database.

Notes to Editors

- 1 Separate data are shown for M4 lending and M4 lending excluding the effects of securitisations and loan transfers. Securitisations reduce both the stock of lending by MFIs and the associated flow. Growth rates excluding the effects of securitisations etc., which more accurately reflect the indebtedness of borrowers, are used in the Bank of England *Inflation Report* and in the minutes of the meetings of the Monetary Policy Committee.
- 2 M4 comprises the M4 private sector's (i.e. the UK private sector other than monetary financial institutions (MFIs)) holdings of: sterling notes and coin; sterling deposits, including certificates of deposit; commercial paper, bonds, FRNs and other instruments of up to and including five years' original maturity issued by UK MFIs; claims on UK MFIs arising from repos; and estimated holdings of sterling bank bills. M4 lending comprises sterling lending by MFIs to the M4 private sector. Further information on the definitions of M4, M4 lending, the counterparts to M4 and calculations of growth rates can be found in the Bank of England *Monetary and Financial Statistics* publication or via the following links:
www.bankofengland.co.uk/mfsd/iadb/notesiadb/m4.htm
www.bankofengland.co.uk/mfsd/iadb/notesiadb/m4_counterparts.htm
www.bankofengland.co.uk/mfsd/iadb/notesiadb/growth_rates.htm
- 3 The Statistical Interactive Database provides long runs of statistical data with comprehensive search options and the ability to download in a variety of formats. This database can be accessed at www.bankofengland.co.uk/mfsd/iadb. The tables shown separately illustrate the codes for each series which can be used for downloading long runs from the database.