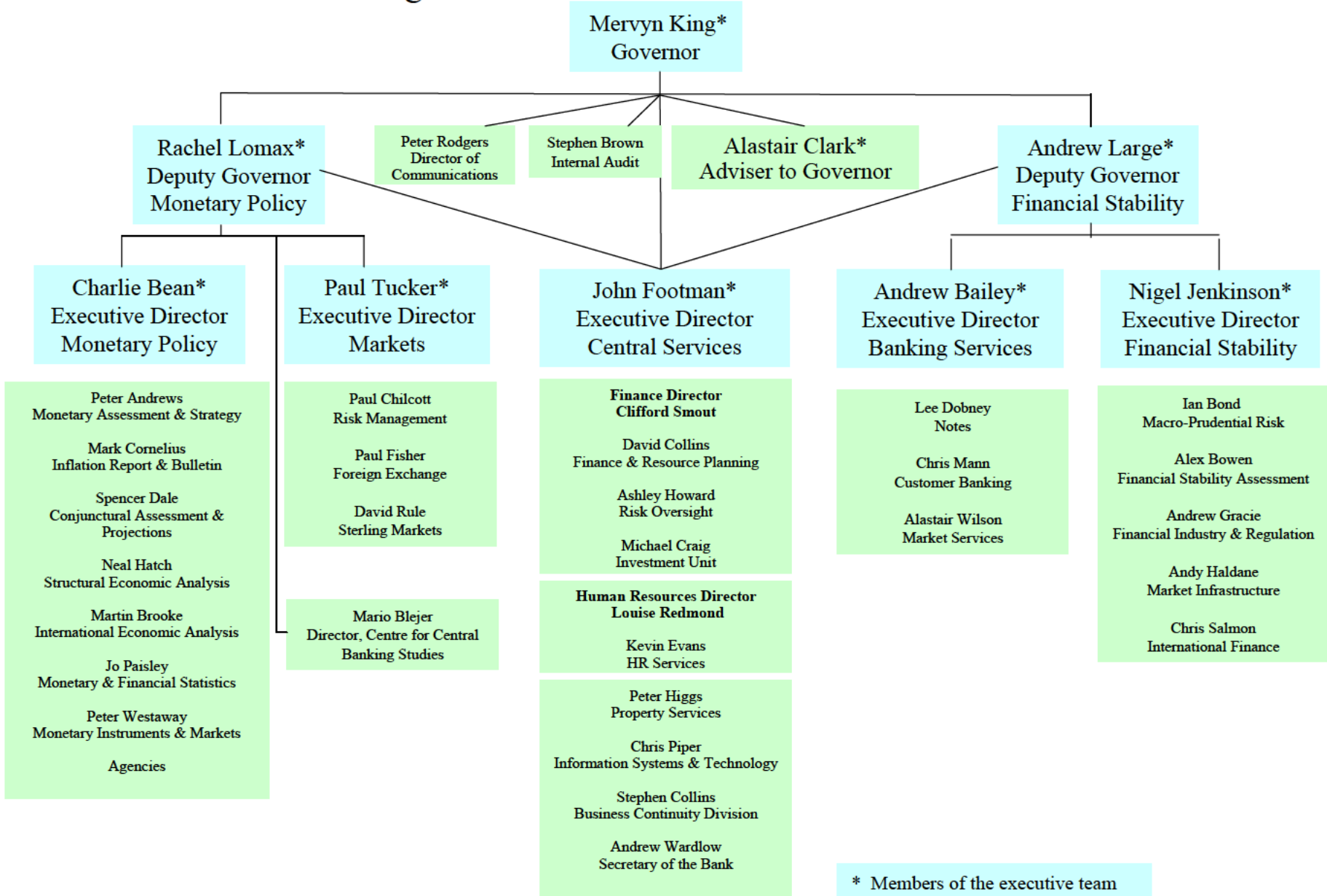


# Bank of England: Executive Team & Divisional Structure



\* Members of the executive team

Among other senior Bank staff not shown above; Len Berkowitz, Adviser to the Governor on Legal Issues

10.10.2005

## **CONTENTS**

Notes For Guidance & Standby Telephone Exchange	(i)
Index Of Departments	(ii) - (iii)
Index Of Names	(iv) - (xvii)
Governors And Directors	1 - 2
Internal Audit Division	3
Central Services	4 - 20
Financial Stability	21 - 25
Financial Market Operations	26 - 33
Markets	34 - 37
Monetary Analysis & Statistics	38 - 48
Amicus The Finance Union	49
Co-ordination Division For Europe	50
First Aiders	51
Postal and Distribution Services	52
Facsimile Services	53 - 56
Minicom Users	57
Bank Of England Postal Addresses	58

**OCTOBER 2005**

(ii)

## INDEX OF DEPARTMENTS

Abbey National Plc . . . . .	31	Information Systems & Technology Division (ISTD) . . . . .	12-15
Amicus Health & Safety Representatives . . . . .	49	Internal Audit Division . . . . .	3
Amicus The Finance Union . . . . .	49	International Economics Analysis Division 5 . . . . .	41
Archive . . . . .	14	International Finance Division . . . . .	22
Bank Medical Officer . . . . .	11	Legal Unit . . . . .	19
Bank Note Reproduction Policy . . . . .	32	Macroprudential Risk Division . . . . .	21
Bank of England Sports Club Committee . . . . .	9	Market Analysis and Intelligence . . . . .	34
Bank Of England Sports Club Committee . . . . .	9	Market Infrastructure Division . . . . .	24
Banking Services . . . . .	26-33	Market Services . . . . .	26
BUPA Helpline . . . . .	11	Markets . . . . .	34-37
Business Continuity Division . . . . .	20	Medical Emergencies (including illness & injury) . . . . .	11
Central Southern (Southampton) Agency . . . . .	43	Monetary & Financial Statistics . . . . .	45-47
Centre For Central Banking Studies . . . . .	48	Monetary Analysis & Statistics . . . . .	38-44
CHAPS/Accounts Management Team Leaders . . . . .	30	Monetary Assessment & Strategy Division 1 . . . . .	39
Community Relations . . . . .	17	Monetary Instruments & Markets Division 2 . . . . .	39
Conference Room Bookings . . . . .	6	Monetary Policy Committee . . . . .	2/38
Conjunctural Assessment & Projection Division 4 . . . . .	41	North East (Newcastle) Agency . . . . .	43
Co-ordination Division For Europe . . . . .	50	North West (Liverpool) Agency . . . . .	43
Counter Enquires . . . . .	29	North West (Manchester) Agency . . . . .	43
Court Administration . . . . .	16	Northern Ireland Agency . . . . .	44
CREST Gilt Settlements . . . . .	29	Note Accounting and Policy . . . . .	32
Custodial Services . . . . .	28	Note Exchanges . . . . .	29
Customer Banking Division . . . . .	28	Payment Systems and Liquidity . . . . .	27
Customer Business & Infrastructure Development . . . . .	31	Pension Fund . . . . .	11
Debden . . . . .	6	Press Office . . . . .	16
Debden Cash Centre . . . . .	33	Press Office Support Team . . . . .	16
East Midlands (Nottingham) Agency . . . . .	43	Print And Copy Shop . . . . .	6
Education and Museum Group . . . . .	16	Property Services & Security Division . . . . .	6-8
Facilities and Services Group . . . . .	7	Public Information & Enquiries Group . . . . .	17
Finance & Resources . . . . .	4-5	Regional Agencies . . . . .	42
Finance and Resource Planning . . . . .	4	Risk Management Division . . . . .	36
Financial Industry And Regulation Division . . . . .	23	Scotland (Glasgow) Agency . . . . .	43
Financial Sanctions . . . . .	26	Secretary's Department . . . . .	16-17
Financial Stability . . . . .	21-25	Security Department . . . . .	18
Foreign currency notes . . . . .	29	Senior Dealers . . . . .	35
Foreign Exchange Division . . . . .	35	Service Development and Policy Analysis . . . . .	28
Fronthall Reception . . . . .	6	South West (Bristol) Agency . . . . .	44
Governors And Directors . . . . .	1-2	South-East & East Anglia Agency . . . . .	43
Governor's Office . . . . .	1	Sports Centre . . . . .	6
Greater London Agency, HO-2 . . . . .	43	STAFF COMMUNICATIONS . . . . .	17
HEAD OFFICE KEY SERVICE CONTACTS . . . . .	6	Sterling Markets Division . . . . .	34
Health & Safety . . . . .	11	Structural Economic Analysis Division 3 . . . . .	40
Healthworks . . . . .	11	Tickets Post - RAH Ballot (Voicemail only) . . . . .	17
Help Desk . . . . .	6	Wales (Cardiff) Agency . . . . .	44
Human Resources . . . . .	10-11	West Midlands (Birmingham) Agency . . . . .	44
Inflation Report and Bulletin Division 6 . . . . .	42	Yorkshire And The Humber (Leeds) Agency . . . . .	44

**Exchange Rate Team**  
Manager

Secretary

Analysts

Research Assistants

(Corporate, Construction)

(Demand)

(Labour)

(Corporate)

**Macro-Finance Team**  
Manager

Secretary

Analysts

**Corporate Sector**  
Acting Manager

Secretaries

(Tue - Thurs)

(Mon + Frid)

Analysts

(senior economist)

**Consultant**

(One day a week)

Rachel Reeves

**Quantitative Analyst**

(Interest rates / Derivatives)

Economic Assistant

**Research Assistants**

**Household and External Sectors**  
Manager

**STRUCTURAL ECONOMIC ANALYSIS DIVISION 3  
(HO-2)**

(Covers structural in the UK. Responsibilities include corporate sector; the supply capacity of the economy; pricing behaviour and the inflation/output trade off, consumption, housing, trade and fiscal policy; and the labour market.)

Head of Division

Neal Hatch .....

Secretary

Secretary

Senior Economist

Analysts

Senior Economist

Advisor Research

**Government Sector**

Secretaries

(Tues-Thurs)

(Mon and Frid)