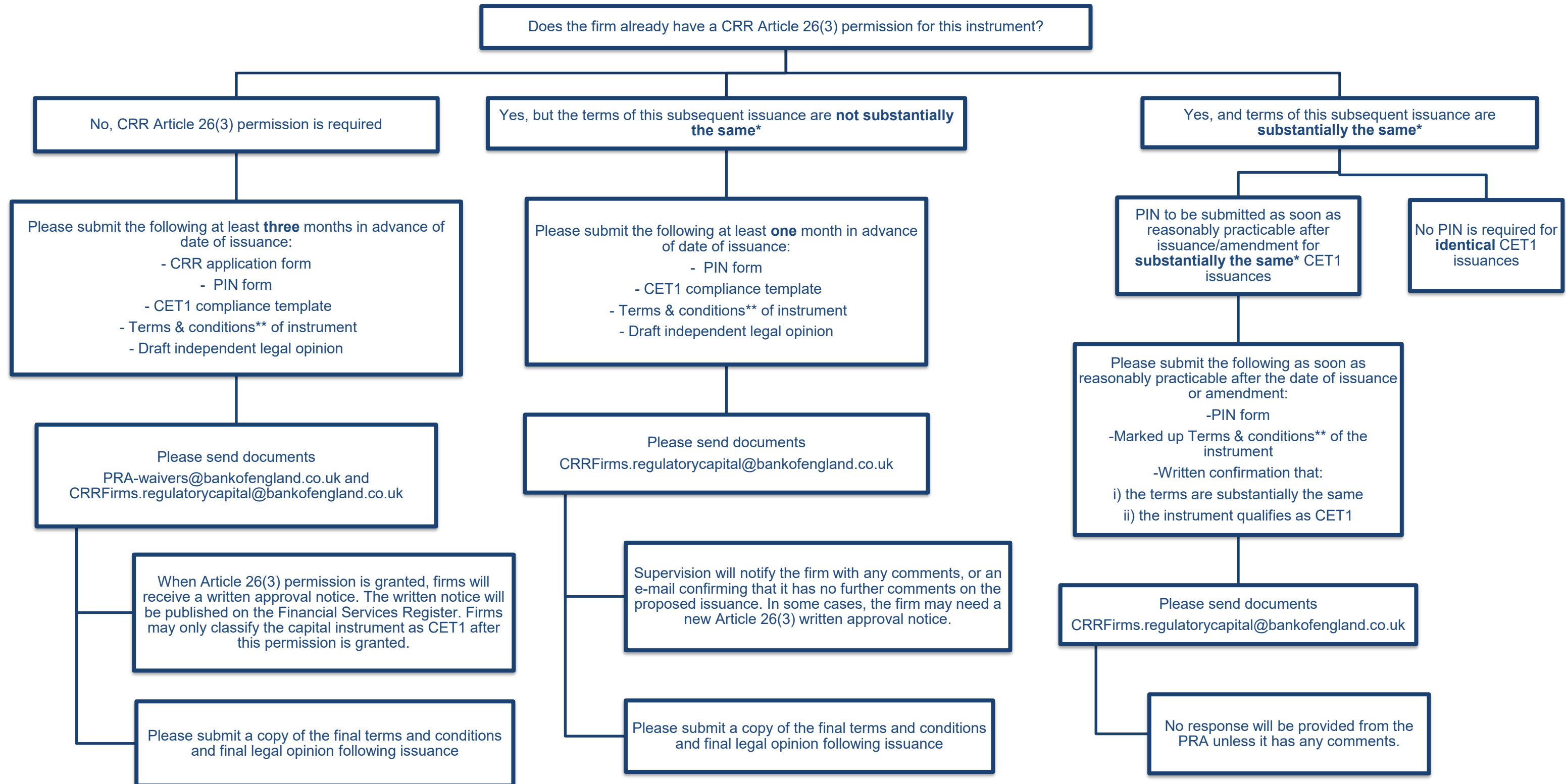


# Bank of England PRA

Flow chart on the interaction of Pre-Issuance Notification (PIN) and CRR Art 26(3) **Common Equity Tier 1 (CET1)** permission processes covering PRA Rule 7A and 7D. This information is relevant to PRA-authorised CRR firms that have issued and classify any instrument as CET1 capital since June 2013 or any future issuances that they wish to classify as CET1.



**\*Substantially the same** The [PRA supervisory statement 7/13](#) clarifies 'substantially the same' for the purposes of PINs.

**\*\*Terms and conditions of the instrument-** Including all relevant side agreements. For AT1 instruments, where the terms & conditions are derived from a previous issuance, a marked-up copy highlighting any changes.

# Bank of England PRA

## Key Resources

**CRR application form:**  
<http://www.bankofengland.co.uk/prapages/authorisations/crr/applying.aspx>

**PIN form:**  
<http://www.bankofengland.co.uk/prapages/supervision/activities/capitalinstruments.aspx>

## Key Information

- Terms of the instrument:**
- the articles of association
  - any side agreement such as any shareholders agreement
  - Where the terms & conditions are derived from a previous issuance, a marked-up copy highlighting any changes.

**Substantially the same** The [PRA supervisory statement 7/13](#) clarifies 'substantially the same' for the purposes of PINs.

## Relevant Provisions

**PRA Rules 7A, 7B, 7D**  
The [PRA rulebook](#) provides the relevant provisions

**\*Substantially the same** The [PRA supervisory statement 7/13](#) clarifies 'substantially the same' for the purposes of PINs.  
**\*\*Terms and conditions of the instrument-** Including all relevant side agreements. For AT1 instruments, where the terms & conditions are derived from a previous issuance, a marked-up copy highlighting any changes.