



Statistical release

Published on 22 January 2015 at 09:30am

Capital issuance: December 2014

Gross capital issuance by UK residents was £23.6 billion in December 2014, £8.7 billion less than in November.

Net capital issuance by UK residents was -£2.0 billion in December 2014, £7.2 billion less than in November.

Table A: Gross capital issuance by UK residents (all currencies)

£ billions

Not seasonally adjusted

| | Gross issues by instrument | | | | Gross issues by sector | | | |
|----------|----------------------------|-------|------|-------|------------------------|------|------|-------|
| | Shares | Bonds | CP | Total | MFI | OFC | PNFC | Other |
| | B33K | B66I | B36K | B22K | B69I | B72I | B73I | B3E9 |
| 2014 Sep | 1.6 | 27.3 | 8.5 | 37.3 | 18.4 | 9.5 | 9.4 | - |
| Oct | 1.4 | 24.5 | 9.0 | 34.9 | 13.1 | 13.6 | 7.7 | 0.4 |
| Nov | 1.2 | 22.8 | 8.3 | 32.3 | 12.2 | 12.6 | 6.9 | 0.5 |
| Dec | 1.2 | 12.7 | 9.6 | 23.6 | 7.3 | 11.2 | 5.1 | - |

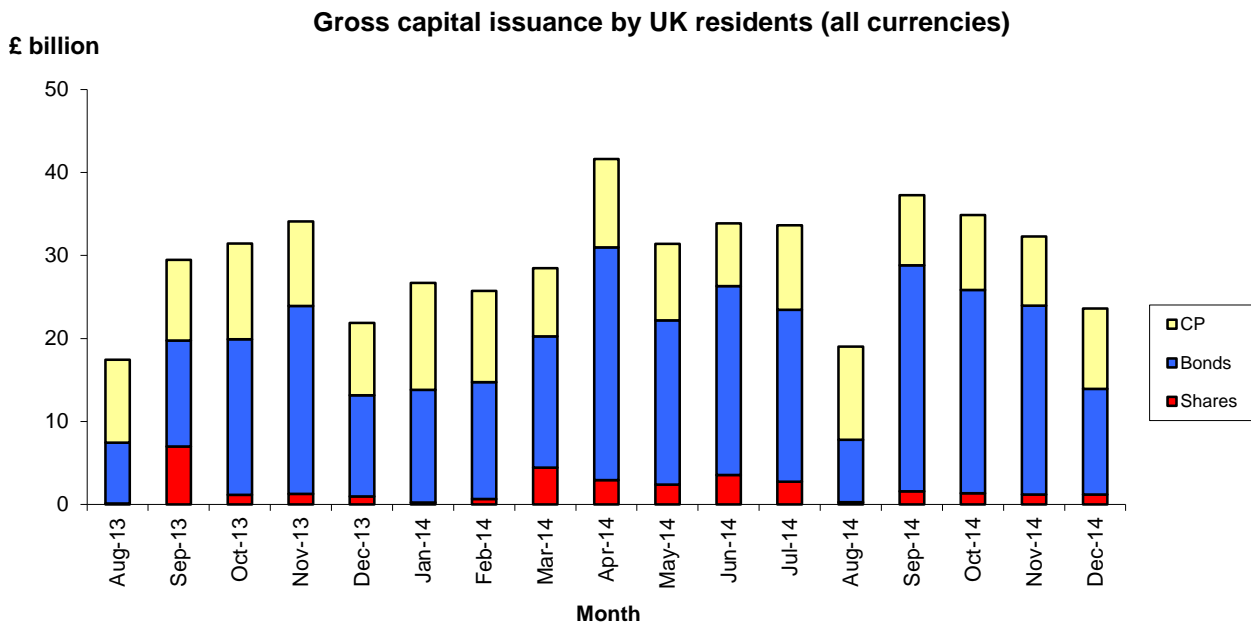


Table B: Net capital issuance by UK residents (all currencies)

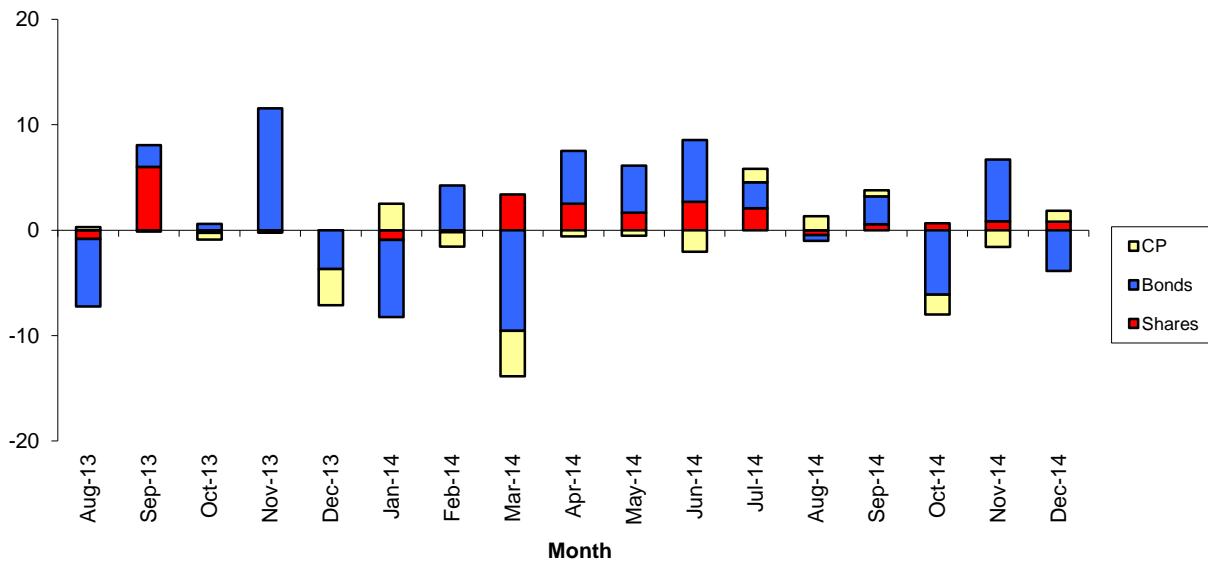
£ billions

Not seasonally adjusted

| | Net issues by instrument | | | | Net issues by sector | | | |
|----------|--------------------------|-------|------|-------|----------------------|------|------|-------|
| | Shares | Bonds | CP | Total | MFI | OFC | PNFC | Other |
| | B35K | B68I | B38K | B24K | B79I | B64M | B83I | B3EB |
| 2014 Sep | 0.6 | 2.7 | 0.6 | 3.8 | 3.7 | -2.0 | 2.1 | - |
| Oct | 0.6 | -6.1 | -1.9 | -7.3 | -7.5 | -3.5 | 3.6 | - |
| Nov | 0.8 | 5.9 | -1.6 | 5.1 | 0.3 | 1.1 | 3.5 | 0.2 |
| Dec | 0.8 | -3.9 | 1.0 | -2.0 | -4.6 | 3.0 | -0.4 | - |

Net capital issuance by UK residents (all currencies)

£ billion



Technical notes

- 1 A more detailed breakdown of these data (by instrument, economic sector and industry) is available in Table E3.1 in Bankstats (www.bankofengland.co.uk/statistics/Pages/bankstats/default.aspx). The Statistical Interactive Database (www.bankofengland.co.uk/boeapps/iadb/newwintermed.asp) provides long runs of statistical data with comprehensive search options and the ability to download in a variety of formats. The series codes are listed within Table E3.1.
- 2 The industry split of net capital issuance by UK residents includes an 'other' industry which comprises public administration, defence, education, health and other personal and social services.
- 3 When banks issue or buy back shares, this is generally done through a holding company which, for statistical purposes is classified as an Other Financial Corporation (OFC).
- 4 For further information on the compilation of the Bank's capital issuance series please refer to the explanatory notes (http://www.bankofengland.co.uk/statistics/Pages/iadb/notesiadb/capital_issues.aspx).