



# Statistical release

Published on 19 February 2015 at 09:30am

## Capital issuance: January 2015

**Gross capital issuance by UK residents** was £29.4 billion in January 2015, £5.8 billion greater than in December.

**Net capital issuance by UK residents** was -£17.4 billion in January 2015, £15.4 billion less than in December.

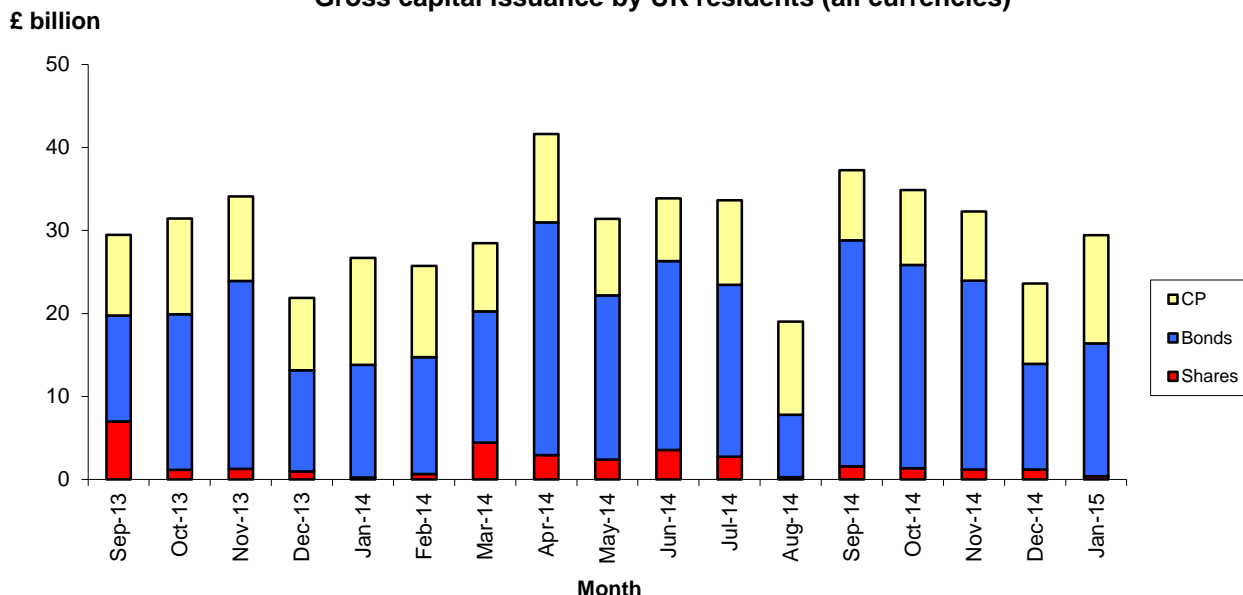
**Table A: Gross capital issuance by UK residents (all currencies)**

£ billions

Not seasonally adjusted

	Gross issues by instrument				Gross issues by sector			
	Shares	Bonds	CP	Total	MFI	OFC	PNFC	Other
	B33K	B66I	B36K	B22K	B69I	B72I	B73I	B3E9
2014 Oct	1.4	24.5	9.0	34.9	13.1	13.6	7.7	0.4
Nov	1.2	22.8	8.3	32.3	12.2	12.6	6.9	0.5
Dec	1.2	12.7	9.6	23.6	7.3	11.2	5.1	-
2015 Jan	0.4	16.0	13.0	29.4	16.5	8.2	4.3	0.4

**Gross capital issuance by UK residents (all currencies)**



**Table B: Net capital issuance by UK residents (all currencies)**

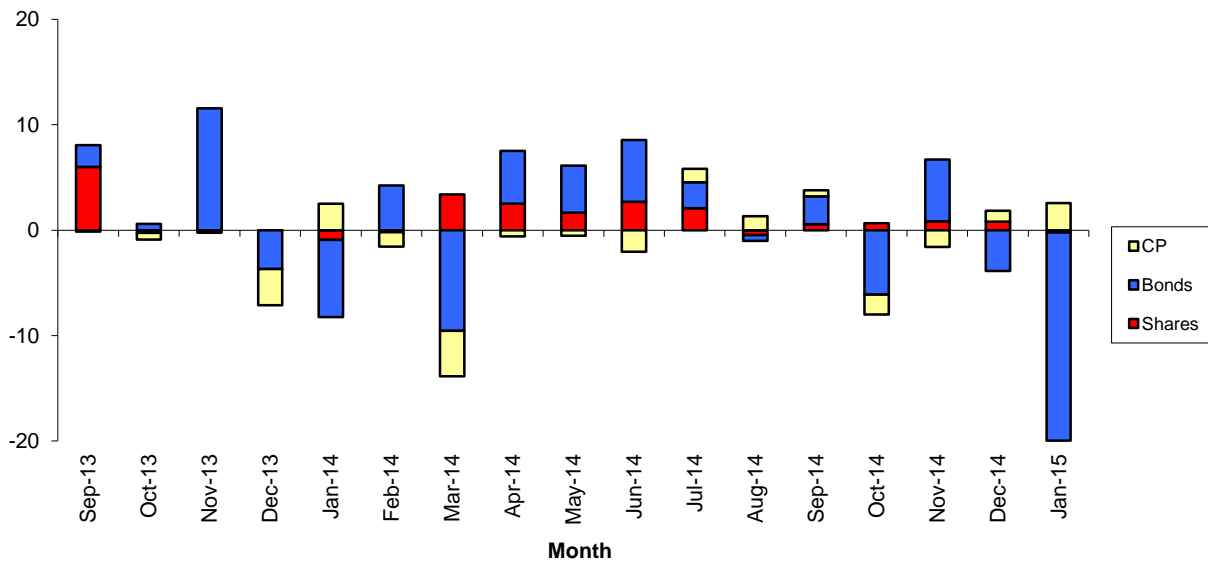
£ billions

Not seasonally adjusted

	Net issues by instrument				Net issues by sector			
	Shares	Bonds	CP	Total	MFI	OFC	PNFC	Other
	B35K	B68I	B38K	B24K	B79I	B64M	B83I	B3EB
2014 Oct	0.6	-6.1	-1.9	-7.3	-7.5	-3.5	3.6	-0.0
Nov	0.8	5.9	-1.6	5.1	0.3	1.1	3.5	0.2
Dec	0.8	-3.9	1.0	-2.0	-4.6	3.0	-0.4	-
2015 Jan	-0.2	-19.7	2.6	-17.4	-2.9	-12.3	-2.1	-0.0

**Net capital issuance by UK residents (all currencies)**

£ billion

**Technical notes**

- 1 A more detailed breakdown of these data (by instrument, economic sector and industry) is available in Table E3.1 in Bankstats ([www.bankofengland.co.uk/statistics/Pages/bankstats/default.aspx](http://www.bankofengland.co.uk/statistics/Pages/bankstats/default.aspx)). The Statistical Interactive Database ([www.bankofengland.co.uk/boeapps/iadb/newwintermed.asp](http://www.bankofengland.co.uk/boeapps/iadb/newwintermed.asp)) provides long runs of statistical data with comprehensive search options and the ability to download in a variety of formats. The series codes are listed within Table E3.1.
- 2 The industry split of net capital issuance by UK residents includes an 'other' industry which comprises public administration, defence, education, health and other personal and social services.
- 3 When banks issue or buy back shares, this is generally done through a holding company which, for statistical purposes is classified as an Other Financial Corporation (OFC).
- 4 For further information on the compilation of the Bank's capital issuance series please refer to the explanatory notes ([http://www.bankofengland.co.uk/statistics/Pages/iadb/notesiadb/capital\\_issues.aspx](http://www.bankofengland.co.uk/statistics/Pages/iadb/notesiadb/capital_issues.aspx)).