

Bank of England

Statistics XBRL Utility v1.2.3.

Release notes

May 2022

Contents



- 1. General information3
- 2. Installation instructions.....3
- 3. Completion instructions.....4
- 4. Disclaimer6

1. General information

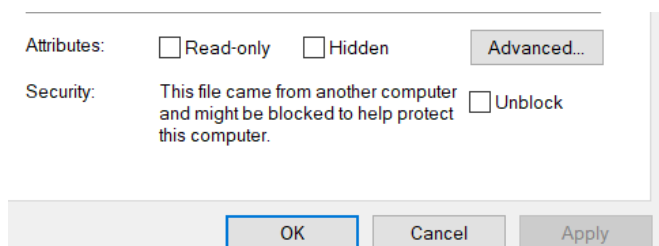
- This simple product (utility) generates an XBRL instance from data entered into the worksheets of the spreadsheet provided. The spreadsheet is based on the annotated templates.
- This utility does not provide any validation of the data entered into the spreadsheet.
- This utility only generates XBRL for the reporting of Statistical data.
- The generate buttons will generate one entry point at a time.
- Form AS is not supported in this tool.
- Firms are responsible for viewing and validating the output generated by the utility prior to submission to the Bank.
- It is the Bank's preference that firms use the XBRL Taxonomy v1.2.3 with compatible software. However, they have the option to use this utility.
- This utility has been created to assist Firms in the transition to XBRL reporting. It will not be maintained for future updates to the Taxonomy, so should be viewed as a temporary solution.

2. Installation instructions

- Download the zip package (Statistical XBRL Utility v1.2.3.zip) from the [Bank of England website](#).
- The zip package contains two files
 - Bank of England Statistics Annotated Templates v123 – May 2022.xlsm
 - Statistics XBRL Utility v1.2.3.xlsm
- These contents of the zip package must be extracted to any folder on your local machine or network. Extracting to a local folder is recommended.
- N.B. You must always keep these two documents together in the same folder for this utility to work correctly, for example:

 Bank of England Statistics Annotated Templates v123 - May 2022	Microsoft Excel Macro-En...	674 KB
 Statistics XBRL Utility v1.2.3	Microsoft Excel Macro-En...	346 KB

- Once extracted to a folder on your local machine or network, ensure that both files have been unblocked in Windows Explorer.
- To unblock, right click on the file name and select 'properties'. Then tick 'Unblock' and select 'Apply'



- Open the spreadsheet 'Statistics XBRL Utility v1.2.3'.

3. Completion instructions

- The spreadsheet is based on the annotated templates (BoE Statistics Annotated Templates v123 – May 2022)
- When opened, you will see the tabs as per the annotated templates.
- If you complete a Form that contains a Z axis, a new tab will open when the Z axis is selected.
- The 'Table of Contents' sheet provides information on which templates you will be required to complete based on your reporting requirements, as well as your chosen @decimal attribute in rows 4-7. These rows have to be completed for all populated templates for the generated xbrl instance to be valid. For further information on how to complete the @decimals attribute please see the BoE filing manual on the [BEEDS webpage](#).

- Along rows 8-9, you will notice a list of the template sheets available to complete for each form.

- Find the relevant template from the tabs below and complete as required or access the link to the Form from the Table of Contents worksheet.

- Completion of sheet 'BI.01.01.01' containing firms' details is mandatory. The utility will not generate a XBRL instance if this mandatory information is not entered (Legal Entity Identifier OR FRN must be provided – it is not necessary to provide both).
- In sheet BI.01.01.01, rows 0040 and 0050, date must be in the format yyyy-mm-dd with the date being the last calendar day of the month.

- i) If a nil return is being created, at least one zero must be entered in to at least one of the cells for that entry point. Example shown below.

	A	B	C	D	E	F	G	H
1	AD.01.01.01 - Analysis of deposits							
2								
3						Deposit liabilities Sight deposits		
4						Sterling	Euro	Other currencies
5						C0010	C0020	C0030
6	Agriculture, hunting and forestry				R0010	0		
7	Fishing				R0020			
8	Mining and quarrying				R0030			
9					R0040			
10		Food, beverages and tobacco			R0050			
11		Textiles, wearing apparel and leather			R0060			
12		Pulp, paper and printing			R0070			
13	Manufacturing	Chemicals, pharmaceuticals, rubber & plastics			R0080			
14		Other non-metallic mineral products, and metals			R0090			
15		Machinery and equipment n.e.c. and transport equipment			R0100			
16		Electrical, medical and optical products and equipment			R0110			
17		Other manufacturing			R0120			
18					R0130			
19	Electricity, gas and water supply	Electricity, gas, steam and air conditioning supply			R0140			
20		Water collection and sewerage			R0150			
21		Waste management, related services and remediation activities			R0160			
22					R0170			
23	Construction	Development of buildings			R0180			
24		Construction of commercial buildings			R0190			
25		Construction of domestic buildings			R0200			
26		Civil Engineering			R0210			
27		Other construction activities			R0220			

Decimal Information

- j) Once you have entered data into all the required template sheets, return to the 'Table of Contents' sheet and click the 'Generate' button for the forms being reported. If you have entered data for multiple Statistical Returns within the spreadsheet, each entry point must be generated separately, and the output will only consider the data in the related tables.

Generate
3
3
3
3
Form AD
AD
BI.01.01.01
AD.01.01.01
AD.02.01.01

- k) In the same folder as the spreadsheet, you will find a generated .xbrl instance named with the following convention:

[MODULE]_[FRN/LEI]_[REPORTING PERIOD END DATE].xbrl

For example this might look like:

AD_123456_2022-03-31.xbrl

4. Disclaimer

This product is provided 'as is' without warranty of any kind, either express or implied, including, but not limited to, the implied warranties of fitness for a purpose, or the warranty of non-infringement. The Bank of England does not accept any responsibility or liability for, the accuracy or completeness of the product on for any loss which may arise from use or reliance of it.