



Statistical release

Published on 30 January 2015 at 09:30

Money and Credit: December 2014

Part one: Broad money and credit

Aggregate money and credit

UK broad money, M4 excluding intermediate other financial corporations (OFCs), increased by £17.0 billion in December, compared to the average monthly increase of £4.9 billion over the previous six months. The three-month annualised and twelve-month growth rates were 5.0% and 4.2% respectively.

M4Lx is defined as M4 lending excluding the effects of securitisations and loan transfers. M4Lx excluding intermediate OFCs increased by £5.4 billion in December, compared to the average monthly increase of £0.8 billion over the previous six months. The three-month annualised and twelve-month growth rates were 0.8% and 0.6% respectively.

Table A: Aggregate money and credit

Sterling

Seasonally adjusted^(a)

	M4					M4Lx				
	excluding intermediate OFCs					excluding intermediate OFCs				
	Amounts outstanding	Changes	Growth rates			Amounts outstanding	Changes	Growth rates		
			1m	3m	12m			1m	3m	12m
£ billions	£ billions	per cent	per cent	per cent	£ billions	£ billions	per cent	per cent	per cent	
	B53Q	B54Q	B68P	B55Q	B56Q	B57Q	B58Q	B66P	B59Q	B62Q
2014 Sep	1,774.2	8.7	0.5	3.6	3.8	1,845.5	-4.1	-0.2	0.2	0.8
Oct	1,769.1	-0.6	0.0	2.6	3.3	1,840.5	-6.5	-0.4	-2.0	0.2
Nov	1,774.6	5.4	0.3	3.1	3.0	1,845.2	4.7	0.3	-1.3	0.5
Dec	1,791.5	17.0	1.0	5.0	4.2	1,848.2	5.4	0.3	0.8	0.6

(a) For the equivalent series not seasonally adjusted, see *Bankstats* Table [A2.2.3](#).

Chart 1: M4 excluding intermediate OFCs

Seasonally adjusted

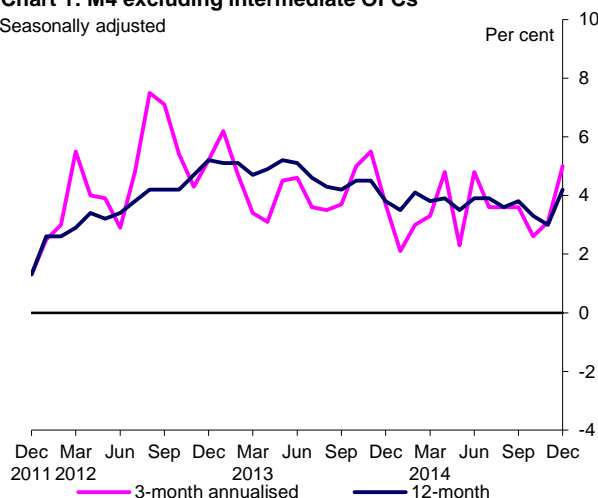
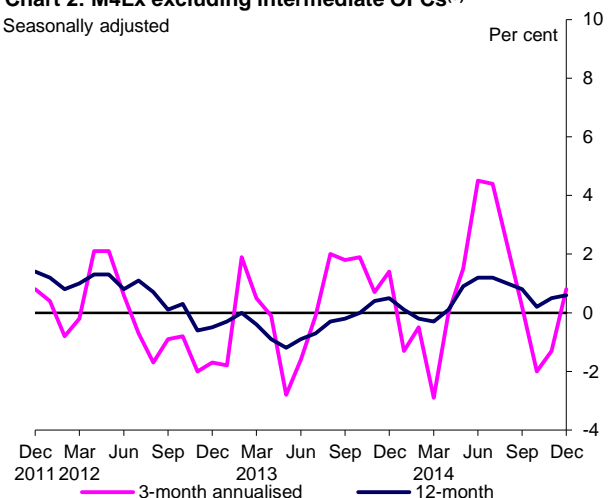


Chart 2: M4Lx excluding intermediate OFCs^(a)

Seasonally adjusted



(a) Excluding the effects of securitisations and loan transfers.

Sectoral money and credit

Households' money and credit

Households' holdings of M4 increased by £5.4 billion in December, compared to the average monthly increase of £4.2 billion over the previous six months. The three-month annualised and twelve-month growth rates were 4.6% and 4.0% respectively.

M4 lending (excluding the effects of securitisations and loan transfers) to households increased by £1.8 billion in December, compared to the average monthly increase of £2.6 billion over the previous six months. The three-month annualised and twelve-month growth rates were 2.3% and 2.6% respectively.

Table B: Households' money and credit

Sterling

Seasonally adjusted

	M4: Households ^(a)					M4Lx: Households ^(b)				
	Amounts outstanding	Changes	Growth rates			Amounts outstanding	Changes	Growth rates		
			1m	3m	12m			1m	3m	12m
	(ann)					(ann)				
£ billions	£ billions	per cent	per cent	per cent	£ billions	£ billions	per cent	per cent	per cent	
	VHR	VHS	VHT	VHU	VHW	BC44	WNV	WNV	WEI	WNZ
2014 Sep	1,211.0	4.7	0.4	4.2	3.7	1,207.8	2.3	0.2	2.6	2.4
Oct	1,215.4	4.4	0.4	4.6	3.8	1,211.8	2.1	0.2	2.3	2.5
Nov	1,218.1	3.9	0.3	4.4	3.9	1,214.3	3.1	0.3	2.5	2.6
Dec	1,223.9	5.4	0.4	4.6	4.0	1,215.7	1.8	0.1	2.3	2.6

(a) For the equivalent series not seasonally adjusted, see *Bankstats* Table [A4.1](#), with the exception of the three-month annualised growth rate, which is available on the Statistical Interactive Database as code [VVIM](#).

(b) For the equivalent series not seasonally adjusted, see *Bankstats* Table [A4.3](#), with the exception of the three-month annualised growth rate, which is available on the Statistical Interactive Database as code [B9Y6](#).

Private non-financial corporations' (PNFCs) money and credit

PNFCs' holdings of M4 increased by £1.9 billion in December, compared to the average monthly increase of £2.1 billion over the previous six months. The three-month annualised and twelve-month growth rates were 9.1% and 8.7% respectively.

M4 lending (excluding the effects of securitisations and loan transfers) to PNFCs decreased by £2.6 billion in December, compared to the average monthly decrease of £1.3 billion over the previous six months. The three-month annualised and twelve-month growth rates were -4.5% and -3.1% respectively.

Table C: PNFCs' money and credit

Sterling

Seasonally adjusted

	M4: PNFCs ^(a)					M4Lx: PNFCs ^(b)				
	Amounts outstanding	Changes	Growth rates			Amounts outstanding	Changes	Growth rates		
			1m	3m	12m			1m	3m	12m
	(ann)					(ann)				
£ billions	£ billions	per cent	per cent	per cent	£ billions	£ billions	per cent	per cent	per cent	
	VHL	VHM	VHN	VHO	VHQ	BC57	WVQ	WVR	WVS	WVU
2014 Sep	303.4	1.6	0.5	8.1	8.8	381.1	-2.0	-0.5	-1.0	-1.1
Oct	307.2	3.8	1.3	10.0	9.6	376.1	-4.3	-1.1	-8.2	-2.7
Nov	308.3	0.9	0.3	8.6	8.6	378.2	2.6	0.7	-3.8	-1.7
Dec	310.3	1.9	0.6	9.1	8.7	373.4	-2.6	-0.7	-4.5	-3.1

(a) For the equivalent series not seasonally adjusted, see *Bankstats* Table [A4.1](#), with the exception of the three-month annualised growth rate, which is available on the Statistical Interactive Database as code [VVIG](#).

(b) For the equivalent series not seasonally adjusted, see *Bankstats* Table [A4.3](#), with the exception of the three-month annualised growth rate, which is available on the Statistical Interactive Database as code [B9Y5](#).

Non-intermediate other financial corporations' (OFCs) money and credit

Non-intermediate OFCs' holdings of M4 increased by £9.6 billion in December, compared to the average monthly decrease of £1.5 billion over the previous six months. The three-month annualised and twelve-month growth rates were 2.3% and -0.1% respectively.

M4 lending (excluding the effects of securitisations and loan transfers) to non-intermediate OFCs increased by £6.2 billion in December, compared to the average monthly decrease of £0.5 billion over the previous six months. The three-month annualised and twelve-month growth rates were 1.4% and -2.6% respectively.

Table D: Non-intermediate OFCs' money and credit

Sterling

Seasonally adjusted^(a)

	M4: Non-intermediate OFCs					M4Lx: Non-intermediate OFCs ^(b)				
	Amounts outstanding	Changes	Growth rates			Amounts outstanding	Changes	Growth rates		
			1m	3m	12m			1m	3m	12m
	£ billions	£ billions	(ann)			£ billions	£ billions	(ann)		
		per cent	per cent	per cent			per cent	per cent	per cent	
	B63Q	B64Q	B67P	B65Q	B66Q	B67Q	B68Q	B65P	B69Q	B72Q
2014 Sep	259.9	2.4	1.0	-4.0	-1.0	256.5	-4.4	-1.7	-8.6	-3.9
Oct	246.5	-8.8	-3.4	-13.9	-5.9	252.5	-4.3	-1.7	-12.0	-5.6
Nov	248.2	0.5	0.2	-8.8	-6.9	252.7	-1.0	-0.4	-14.1	-5.7
Dec	257.3	9.6	3.9	2.3	-0.1	259.1	6.2	2.5	1.4	-2.6

(a) For the equivalent series not seasonally adjusted, see *Bankstats* Table [A2.2.3](#).

(b) These series have not been seasonally adjusted as, after examination, they were found not to be significantly seasonal. These series are reviewed for seasonality regularly.

Chart 3: Sectoral M4 excluding intermediate OFCs

Seasonally adjusted

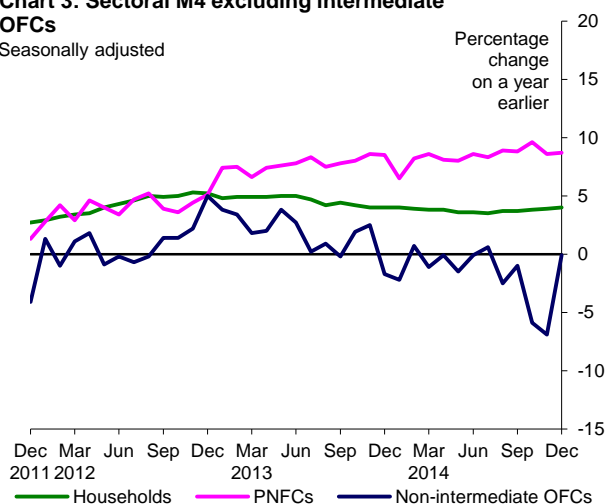
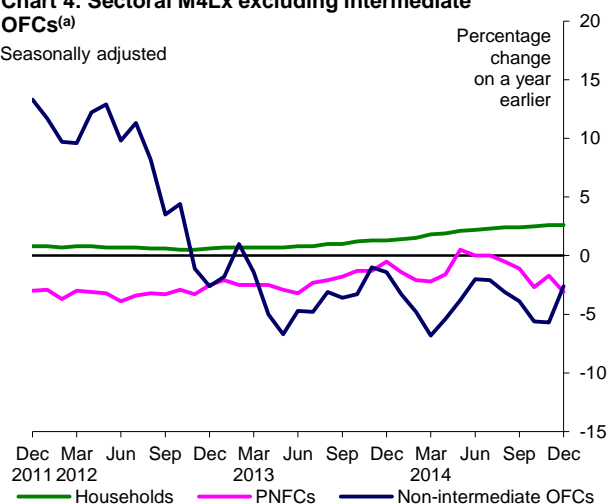


Chart 4: Sectoral M4Lx excluding intermediate OFCs^(a)

Seasonally adjusted



(a) Excluding the effects of securitisations and loan transfers.

About these data:

Monetary financial institutions (MFIs) are defined as UK-resident banks and building societies.

Data presented in Tables A to D and Charts 1 to 4 relate to UK sterling measures of broad money (M4 excluding intermediate OFCs) and credit (M4Lx excluding intermediate OFCs). The credit measure excludes the effects of any securitisations of lending by banks and building societies: this means that any lending that is securitised remains included in this definition. The notation M4Lx is used to indicate the exclusion of these effects and the effects of loan transfers.

Broad money comprises cash (sterling only) and holdings of sterling deposits and similar short-term sterling liabilities including repo positions. Credit comprises sterling borrowing from UK MFIs, including loans, overdrafts, issuance of securities, reverse repos and similar financial instruments.

In all tables, the 'changes' data are measured after the removal of significant series break effects that may be present in the amounts outstanding measures. Growth rates are calculated using 'changes' data.

Further information can be found in the explanatory notes, available at www.bankofengland.co.uk/statistics/Pages/iadb/notesiadb/m4_sectoral.aspx.

If you have any queries with regards to these data please email srdd_ms@bankofengland.co.uk or call 020 7601 5361.

Aggregate M4 and M4 lending

Table E provides summary data for the aggregate broad money and credit data on definitions that do not exclude intermediate OFCs, i.e. they include all OFCs. In addition, aggregate data are also presented for M4 lending, which does not exclude the effects of securitisations and loan transfers.

Table E: Aggregate M4 and M4 lending

Sterling

Seasonally adjusted

	M4 ^(a)			M4 lending ^(b)			M4Lx ^(c)		
	Changes	Growth rates		Changes	Growth rates		Changes	Growth rates	
		1m	12m		1m	12m		1m	12m
	£ billions	per cent	per cent	£ billions	per cent	per cent	£ billions	per cent	per cent
	AUZJ	VQJS	VQJW	AVBR	VQJQ	VQJU	VWVL	VWVM	VWVP
2014 Sep	-14.4	-0.7	-2.5	-3.2	-0.1	-4.7	-3.7	-0.2	-4.9
Oct	-1.1	-0.1	-2.6	-15.3	-0.7	-4.7	-15.7	-0.7	-4.8
Nov	2.1	0.1	-2.7	-3.7	-0.2	-5.1	-3.5	-0.2	-5.2
Dec	2.5	0.1	-1.1	3.3	0.2	-3.9	2.5	0.1	-4.0

(a) For the equivalent series not seasonally adjusted, see *Bankstats* Tables [A2.2.1](#), [A2.2.3](#) and [A3.1](#).

(b) For the equivalent series not seasonally adjusted, see *Bankstats* Tables [A2.1.1](#) and [A3.1](#).

(c) For the equivalent series not seasonally adjusted, see *Bankstats* Tables [A2.1.1](#) and [A2.2.3](#).

Deposits and loans of financial and non-financial businesses, by industry

Deposits from financial and non-financial businesses decreased by £29.1 billion in December, compared to the average monthly decrease of £6.6 billion over the previous six months. The decrease was mainly in deposits from businesses in the financial services industry (-£33.2 billion). The twelve-month growth rate was -7.7%.

Loans to financial and non-financial businesses decreased by £33.5 billion in December, compared to the average monthly decrease of £7.7 billion over the previous six months. The decrease was mainly in loans to businesses in the financial services industry (-£29.1 billion). The twelve-month growth rate was -12.7%.

Table F: Deposits and loans of financial and non-financial businesses, by industry^(a)

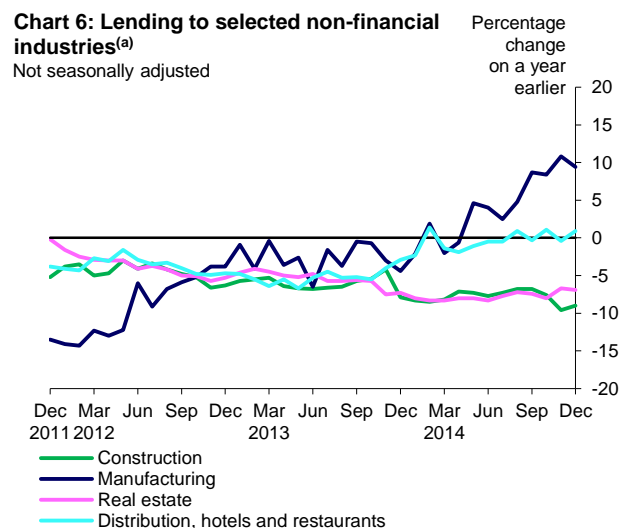
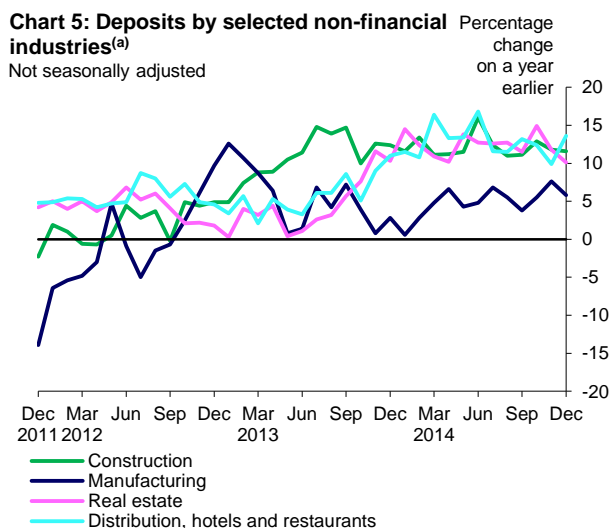
All currencies

Not seasonally adjusted

December 2014

	Deposits						Loans					
	Amounts		Changes	Growth rate		Amounts		Changes	Growth rate			
	outstanding	£ billions		12m	per cent	outstanding	£ billions		12m	per cent		
	£ billions	£ billions		per cent	£ billions	£ billions		per cent	per cent			
Agriculture, hunting, forestry and fishing	Z8ZE	7.0	Z8ZF	0.9	Z8ZG	3.9	Z929	16.2	Z92A	-0.6	Z92B	10.4
Total production	Z8ZH	75.3	Z8ZI	1.8	Z8ZJ	6.8	Z92C	54.7	Z92D	0.0	Z92E	7.5
Mining and quarrying	TDAD	16.5	BG25	-2.5	Z8ZK	8.1	TBSE	5.9	BG85	-0.1	Z92F	1.3
Manufacturing	TDAE	48.6	BG26	3.4	B6G7	5.8	TBSF	35.0	BG86	-0.6	BH43	9.4
Electricity, gas and air conditioning supply	TDAN	5.8	BG38	0.9	Z8ZL	7.1	TBSO	9.3	BG97	0.9	Z92H	10.2
Water supply, sewerage etc.	Z8ZM	4.5	Z8ZN	0.1	Z8ZO	12.2	Z92I	4.5	Z92J	-0.2	Z92K	-2.8
Construction	TDAP	30.7	BG42	1.4	B8G2	11.6	TBSQ	45.5	BG99	-2.2	BH56	-9.0
Total services	Z8ZP	1,129.0	Z8ZQ	-33.4	Z8ZR	-9.0	Z92L	962.8	Z92M	-30.7	Z92N	-14.1
Distribution, hotels and restaurants	Z8ZS	55.1	Z8ZT	5.6	Z8ZU	13.6	Z92O	66.7	Z92P	0.4	Z92Q	0.9
Transport, storage and communication	TDAV	43.1	BG48	2.1	Z8ZV	3.9	TBSW	27.8	B2G7	0.6	Z92R	-5.9
Business services	TDAA	134.0	BG49	-1.8	Z8ZW	6.6	TBSX	173.1	B2G8	-1.3	Z92S	-4.3
o/w Real estate	TDAX	39.3	BG52	2.4	B9G2	10.1	TBSY	129.8	B2G9	-0.4	BH66	-6.9
Financial services	B3H2	796.9	B2H6	-33.2	B3H6	-13.8	B4H4	644.3	B2H4	-29.1	B4H8	-18.6
Financial intermediation	TDBG	449.0	BG64	-0.1	BH23	-20.3	TBTI	379.7	B4G2	-8.1	BH77	-26.3
Insurance companies and pension funds	TDBR	59.3	BG77	-0.9	BH36	-1.8	TBTT	23.6	B5G5	0.6	BH92	-9.8
Activities auxiliary to financial intermediation	B5H5	288.6	B5H4	-32.2	B5H6	-3.4	B5H8	241.0	B5H7	-21.7	B5H9	-3.9
Government and other services	Z926	99.8	Z927	-6.2	Z928	0.1	Z932	50.8	Z933	-1.3	Z934	-3.4
Total financial and non-financial businesses	Z8ZX	1,241.9	Z8ZY	-29.1	Z8ZZ	-7.7	Z92T	1,079.1	Z92U	-33.5	Z92V	-12.7
o/w Non-financial businesses	B2H9	445.1	B2H5	4.0	B3H5	5.9	B4H3	434.9	B2H3	-4.3	B4H7	-2.3

(a) The SIC codes associated with the series shown in this table are available at www.bankofengland.co.uk/statistics/Pages/iadb/notesiadb/industrial.aspx.



(a) From January 2011, data are on the SIC 2007 basis. Changes in the SIC codes have led to some components moving between industries. As a result, growth rates in 2011 may be affected.

About these data:

Monetary financial institutions (MFIs) are defined as UK-resident banks and building societies.

Data presented in Table F relate to deposits placed at MFIs by all UK industries and loans by MFIs to all UK industries. Data cover loans and deposits in both sterling and foreign currency, expressed in sterling.

Deposits and loans are classified according to the National Accounts standard industrial classification.

Table F has a broader scope compared to Tables A to D. It includes all currencies and also covers public sector institutions and enterprises, and intermediate financial corporations.

Further information can be found in the explanatory notes, available at www.bankofengland.co.uk/statistics/Pages/iadb/notesiadb/industrial.aspx.

If you have any queries with regards to these data please email srdd_ms@bankofengland.co.uk or call 020 7601 5361.

Money and Credit: December 2014

Part two: Lending to individuals

Total lending to individuals

Total lending to individuals increased by £2.2 billion in December, compared to the average monthly increase of £2.9 billion over the previous six months. The three-month annualised and twelve-month growth rates were 2.2% and 2.3% respectively.

Table G: Lending to individuals

Sterling

Seasonally adjusted^(a)

	Amounts outstanding £ billions	Changes £ billions	Growth rates		
			1m	3m(ann)	12m
			per cent	per cent	per cent
	BZ2A	BZ2C	BZ2E	BZ2G	BZ2K
2014 Sep	1,461.0	2.4	0.2	2.5	2.2
Oct	1,462.7	2.5	0.2	2.2	2.3
Nov	1,464.8	3.1	0.2	2.2	2.3
Dec	1,466.4	2.2	0.1	2.2	2.3

(a) For the equivalent series not seasonally adjusted, see *Bankstats* Table [A5.2](#), with the exception of the three-month annualised growth rate, which is available on the Statistical Interactive Database as code [BZ2H](#).

Lending secured on dwellings

Lending secured on dwellings increased by £1.6 billion in December, compared to the average monthly increase of £1.9 billion over the previous six months. The three-month annualised and twelve-month growth rates were 1.5% and 1.8% respectively. Gross lending secured on dwellings was £16.6 billion and repayments were £14.6 billion.

Table H: Lending secured on dwellings

Sterling

Seasonally adjusted^(a)

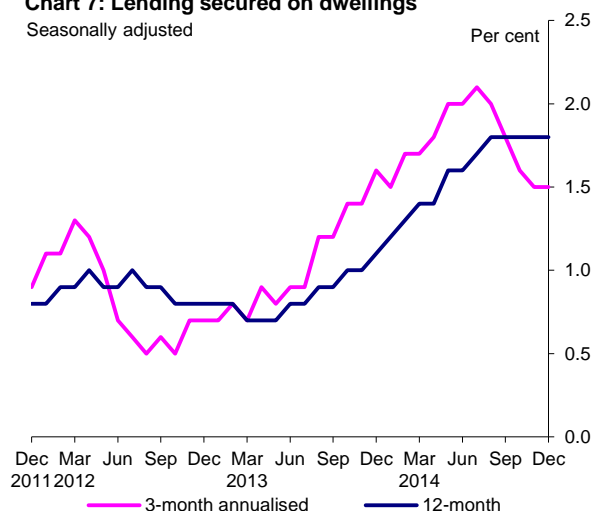
	Amounts outstanding £ billions	Changes ^(b) £ billions	Growth rates			Gross lending £ billions	Repayments £ billions
			1m	3m(ann)	12m		
			per cent	per cent	per cent		
	VTXK	VTVJ	VTYF	VTYG	VTYI	VTVC	B86L
2014 Sep	1,295.8	1.5	0.1	1.8	1.8	16.8	15.4
Oct	1,294.7	1.4	0.1	1.6	1.8	16.5	14.9
Nov	1,296.1	1.9	0.1	1.5	1.8	16.5	14.7
Dec	1,297.6	1.6	0.1	1.5	1.8	16.6	14.6

(a) For the equivalent series not seasonally adjusted, see *Bankstats* Tables [A5.2](#), [A5.3](#) and [A5.5](#), with the exception of the three-month annualised growth rate, which is available on the Statistical Interactive Database as code [B3XJ](#).

(b) The changes series will not necessarily equal gross lending minus repayments, due to the seasonal adjustment methodology used and small differences in coverage between the three series.

Chart 7: Lending secured on dwellings

Seasonally adjusted



Mortgage approvals

The number of loan approvals for house purchase was 60,275 in December, compared to the average of 62,652 over the previous six months. The number of approvals for remortgaging was 32,912, compared to the average of 31,924 over the previous six months. The number of approvals for other purposes was 9,723, compared to the average of 9,780 over the previous six months.

Table I: Approvals of loans secured on dwellings

Sterling

Seasonally adjusted^(a)

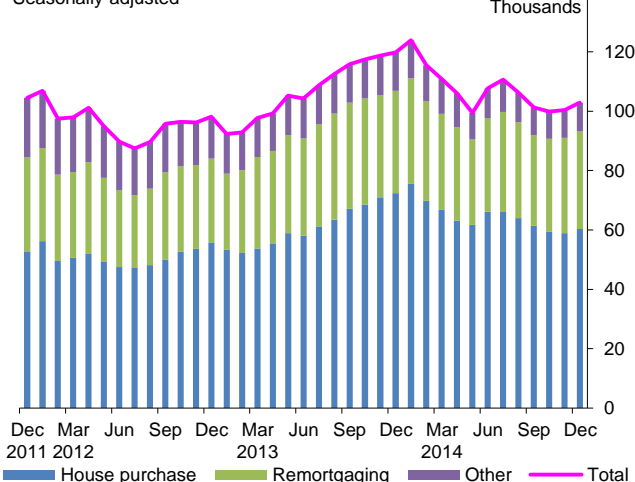
	Total		House purchase		Remortgaging		Other	
	Value ^(b)	Number	Value	Number	Value	Number	Value	Number
	£ billions		£ billions		£ billions		£ billions	
	VTVQ	B3C8	B4B5	VTVX	B4B6	B4B3	B4B7	B4B4
2014 Sep	15.1	101,230	10.1	61,367	4.9	30,532	0.5	9,332
Oct	15.3	99,928	9.7	59,350	5.0	31,347	0.5	9,232
Nov	15.3	100,383	9.6	58,956	5.2	32,064	0.5	9,363
Dec	15.2	102,910	9.8	60,275	5.1	32,912	0.5	9,723

(a) For the equivalent series not seasonally adjusted, see *Bankstats* Table [A5.4](#).

(b) Owing to the seasonal adjustment methodology, this series may not equal the sum of its components.

Chart 8: Approvals of loans secured on dwellings

Seasonally adjusted



Consumer credit

Consumer credit increased by £0.6 billion in December, compared to the average monthly increase of £1.0 billion over the previous six months. The three-month annualised and twelve-month growth rates were 7.2% and 6.7% respectively.

Table J: Consumer credit

Sterling

Seasonally adjusted^(a)

	Amounts outstanding £ billions	Changes £ billions	Growth rates		
			1m	3m(ann)	12m
			per cent	per cent	per cent
	B12O	B3PS	B3PW	B3PY	B4TC
2014 Sep	165.2	0.9	0.6	7.7	6.1
Oct	168.0	1.1	0.7	7.6	6.5
Nov	168.7	1.2	0.7	8.2	6.9
Dec	168.8	0.6	0.3	7.2	6.7

(a) For the equivalent series not seasonally adjusted, see *Bankstats* Tables [A5.2](#) and [A5.6](#), with the exception of the three-month annualised growth rate, which is available on the Statistical Interactive Database as code [B3MZ](#).

Within consumer credit, credit card lending increased by £0.3 billion in December, compared to the average monthly increase of £0.2 billion over the previous six months. Other loans and advances increased by £0.3 billion, compared to the average monthly increase of £0.8 billion over the previous six months.

Table K: Consumer credit by category

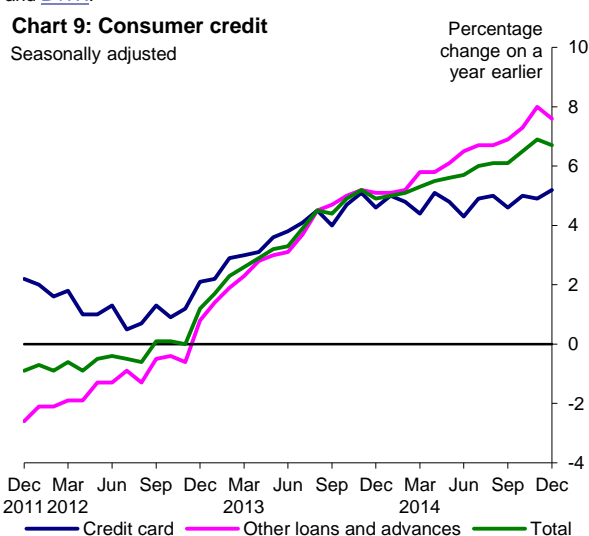
Sterling

Seasonally adjusted

	Credit card ^(a)					Other loans and advances ^(b)				
	Amounts outstanding £ billions	Changes £ billions	Growth rates			Amounts outstanding £ billions	Changes £ billions	Growth rates		
			1m per cent	3m(ann) per cent	12m per cent			1m per cent	3m(ann) per cent	12m per cent
	VZRJ	VZQX	B7A4	VZZM	VUJZ	B4TS	B4TU	B4TK	B4TM	B4TQ
2014 Sep	58.5	0.0	0.0	4.7	4.6	106.6	0.9	0.9	9.4	6.9
Oct	60.9	0.4	0.7	5.2	5.0	107.1	0.7	0.6	8.9	7.3
Nov	61.0	0.3	0.5	4.8	4.9	107.7	1.0	0.9	10.1	8.0
Dec	61.1	0.3	0.5	6.7	5.2	107.8	0.3	0.3	7.4	7.6

(a) For the equivalent series not seasonally adjusted, see *Bankstats* Table [A5.6](#), with the exception of the growth rates, which are available on the Statistical Interactive Database as codes [B8A4](#), [B8A5](#) and [B8A7](#).

(b) For the equivalent series not seasonally adjusted, see *Bankstats* Table [A5.6](#), with the exception of the growth rates, which are available on the Statistical Interactive Database as codes [B4TL](#), [B4TN](#) and [B4TR](#).



About these data:

Monetary financial institutions (MFIs) are defined as UK-resident banks and building societies.

Data presented in Tables G to K relate to sterling lending to individuals and housing associations by MFIs and by other lenders (including non-MFI consumer credit grantors, specialist mortgage lenders, retailers, central and local government, public corporations and insurance companies).

Lending to individuals is split between lending secured on dwellings (mortgages) and consumer credit. Consumer credit is further split between credit card debt and other loans and advances. Student loans are excluded from the definitions in this statistical release.

The data presented in Part two are not directly comparable to the data on M4 lending to households presented in Part one. Firstly, they relate to a different definition of borrowers, comprising individuals plus housing associations, whereas in Part one households are defined to include individuals, unincorporated businesses and non-profit institutions serving households but to exclude housing associations. Secondly, they relate to a broader definition of lenders as they include other (non-MFI) lenders, which are excluded from the M4 lending definitions. The tables also provide additional information on flows of new lending and repayments, and on mortgage approvals.

In all tables, the 'changes' data are measured after the removal of significant series break effects that may be present in the amounts outstanding measures. Growth rates are calculated using 'changes' data.

There is some overlap in the data covered in this release with those in the joint Bank of England and FCA [release](#) on Mortgage Lenders and Administrators Statistics. For further details see *Bankstats*, November 2014, 'Residential mortgages: a comparison of the Bank of England's published statistical and regulatory data collections', available at www.bankofengland.co.uk/statistics/Documents/ms/articles/art1nov14.pdf.

Further information on lending to individuals data can be found in the explanatory notes, available at www.bankofengland.co.uk/statistics/Pages/iadb/notesiadb/ltot.aspx.

If you have any queries with regards to these data please email srdd_ms@bankofengland.co.uk or call 020 7601 5361.

Money and Credit: December 2014

Part three: Lending to businesses

PNFCs' financing

Table L outlines a wider measure of PNFCs' financing from MFIs and capital markets. PNFCs' net finance raised from MFIs and capital markets was £0.7 billion in December, compared to the average of £2.2 billion raised over the previous six months.

Table L: Net finance raised by PNFCs

All currencies, £ billions

Seasonally adjusted

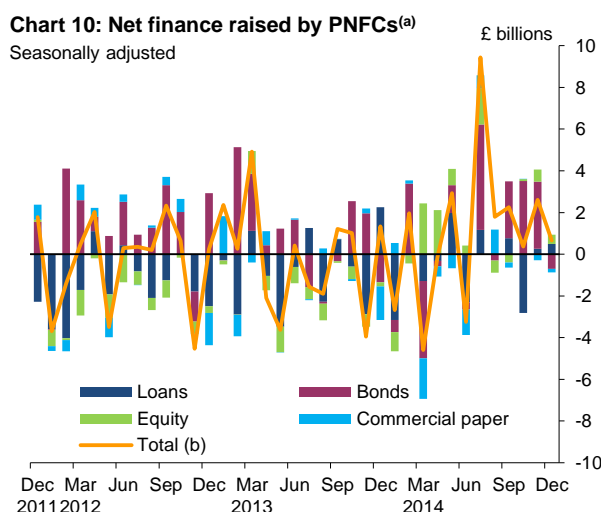
	Net finance raised by PNFCs from MFIs and capital markets ^(a)		of which:		
	Equity issued by PNFCs ^(b)	Bonds issued by PNFCs ^(b)	Commercial paper issued by PNFCs ^(b)	Loans by MFIs ^{(c)(d)}	
	VYW	B29L	Z93T	B32L	B93K
2014 Sep	2.2	-0.4	2.7	-0.2	0.8
Oct	0.4	0.1	3.5	0.0	-2.8
Nov	2.6	0.6	3.2	-0.3	0.3
Dec	0.7	0.4	-0.7	-0.2	0.5

(a) Owing to the seasonal adjustment methodology, this series may not equal the sum of its components.

(b) This series has not been seasonally adjusted as, after examination, it was found not to be significantly seasonal. This series is reviewed for seasonality regularly.

(c) The sterling loans component excludes the effects of securitisations and loan transfers.

(d) An equivalent series not seasonally adjusted, is available on the IADB as code [B6NT](#).



(a) Finance raised by PNFCs from monetary financial institutions and capital markets. Data cover funds raised in both sterling and foreign currency, expressed in sterling. Bonds, equity and commercial paper are non seasonal.

(b) Owing to the seasonal adjustment methodology, this series may not equal the sum of its components.

Loans to non-financial businesses

Loans to non-financial businesses decreased by £3.8 billion in December, compared to the average monthly decrease of £0.8 billion over the previous six months. The twelve-month growth rate was -2.8%. Within this, loans to small and medium-sized enterprises (SMEs) decreased by £1.0 billion, compared to the average monthly decrease of £0.1 billion over the previous six months. The twelve-month growth rate was -2.1%.

Table M: Loans to non-financial businesses

All currencies

Not seasonally adjusted

Non-financial businesses					of which: SMEs ^(a)			
	Amounts outstanding		Changes	Growth rate	Amounts outstanding		Changes	Growth rate
	£ billions	of which: Overdrafts £ billions			£ billions	£ billions		
	Z8YJ	Z8YG	Z8YP	Z8YV	Z8YH	Z8YE	Z8YN	Z8YT
2014 Sep	442.2	40.9	-0.8	-3.1	171.2	14.0	-0.2	-2.3
Oct	442.2	41.0	-1.9	-3.2	169.4	13.5	-0.3	-2.1
Nov	442.1	42.0	-0.1	-2.3	170.6	13.5	0.3	-2.0
Dec	435.3	42.0	-3.8	-2.8	167.1	12.4	-1.0	-2.1

(a) SMEs are those businesses with annual debit account turnover on the main business account less than £25 million.

Gross lending to and repayments by non-financial businesses (excluding overdrafts)

Gross lending to non-financial businesses was £19.7 billion in December, compared to the average of £16.3 billion over the previous six months. Within this, gross lending to SMEs was £5.8 billion, compared to the average of £4.6 over the previous six months. Repayments by non-financial businesses were £23.7 billion in December, compared to the average of £17.4 billion over the previous six months. Within this, repayments by SMEs were £6.0 billion, compared to the average of £4.6 billion over the previous six months. Net lending – defined as gross lending minus repayments – to large businesses was -£3.8 billion in December. Net lending to SMEs was -£0.2 billion.

Table N: Gross lending to and repayments by non-financial businesses (excluding overdrafts)

All currencies, £ billions

Not seasonally adjusted

Non-financial businesses					of which: SMEs ^(a)			
	Amounts outstanding	Gross lending	Repayments	Net lending ^(b)	Amounts outstanding	Gross lending	Repayments	Net lending ^(b)
	Z8YD	Z8Y4	Z8Y7	Z8YA	Z8YB	Z8Y2	Z8Y5	Z8Y8
2014 Sep	401.3	17.0	18.3	-1.3	157.2	4.8	5.0	-0.2
Oct	401.2	15.8	17.2	-1.4	156.0	5.2	5.0	0.2
Nov	400.1	17.0	18.1	-1.1	157.1	4.7	4.4	0.3
Dec	393.3	19.7	23.7	-4.0	154.7	5.8	6.0	-0.2

(a) SMEs are those businesses with annual debit account turnover on the main business account less than £25 million.

(b) Net lending is defined as gross lending minus repayments.

About these data:

Monetary financial institutions (MFIs) are defined as UK-resident banks and building societies.

Data presented in Table L relate to net flows of lending to UK private non-financial corporations (PNFCs) in the form of borrowing from MFIs and issuance of securities by PNFCs (such as equity, bonds and commercial paper) on capital markets, to all investors, in all currencies. There may be some flows of global finance to UK PNFCs not captured by these data. Further information can be found in the Capital Issuance release, available at www.bankofengland.co.uk/statistics/Pages/calendar/default.aspx.

Tables M and N relate to UK MFIs lending to UK non-financial businesses, in all currencies. This is a broader coverage of borrowers than Tables A and C, because this definition of businesses also includes public sector enterprises and unincorporated businesses, but it relates to a narrower definition of lending, because capital market issuance of debt securities is excluded. There is an 'of which' split relating to small and medium-sized enterprises (SMEs). Gross lending data presented in Table N relate to gross loans excluding overdrafts.

Further information can be found in the explanatory notes, available at

www.bankofengland.co.uk/statistics/Pages/iadb/notesiadb/loans_to_non-financial_businesses.aspx.

If you have any queries with regards to these data please email srdd_ms@bankofengland.co.uk or call 020 7601 5361.

Technical notes

Background material on the data in this statistical release is provided in the 'About these data' sections in each Part. These notes cover more technical material.

General

- 1 The Statistical Interactive Database, IADB, (www.bankofengland.co.uk/boeapps/iadb/NewIntermed.asp) provides long runs of statistical data with comprehensive search options and the ability to download these in a variety of formats. The series codes are listed in the tables in this release. Tables providing more detailed breakdowns of data, including quarterly data, are also available in Bank of England *Bankstats* (*Monetary & Financial Statistics*) (www.bankofengland.co.uk/statistics/Pages/bankstats/default.aspx).
- 2 Further information on the definition of 'changes', the treatment of break effects and the calculation of growth rates can be found at www.bankofengland.co.uk/statistics/Pages/iadb/notesiadb/Changes_flows_growth_rates.aspx. Movements in amounts outstanding can reflect breaks in data series as well as underlying flows. Users requiring data for amounts outstanding series on a break-adjusted basis should refer to www.bankofengland.co.uk/statistics/Pages/iadb/notesiadb/Break_adjusted_levels_data.aspx. For changes and growth rates data, users are recommended to refer directly to the appropriate series or data tables.
- 3 Monetary Financial Institutions (MFIs) are defined as UK-resident banks and building societies. Money and credit data, including the industrial analysis of deposits and lending, exclude inter-MFI deposits and lending.
- 4 All tables in this statistical release have UK coverage, meaning that they relate to deposits of, or credit to, UK residents only. Loans include MFIs' loans and advances including under reverse repos, to the non-MFI sector. Deposits includes MFIs' liabilities under repo positions.
- 5 Tables showing data for totals and components of totals may be subject to rounding effects.
- 6 When the 'direct method' of seasonal adjustment is used for a totals series, the seasonally adjusted total need not correspond to the sum of its seasonally adjusted components. Under the alternative 'indirect' method, however, this equality is preserved. The choice of application of the 'direct' or 'indirect' method depends on an assessment of the seasonal adjustment criteria in any particular case. For more details please see Annex A, *Bankstats*, September 2010, 'Seasonal adjustment of quarterly M4 excluding intermediate OFCs (M4ex)', available at www.bankofengland.co.uk/statistics/Documents/ms/articles/art1sep10.pdf.

Part one

- 7 In Tables A and D, intermediate other financial corporations (OFCs) are defined as non-bank credit grantors; mortgage and housing credit corporations; bank holding companies; securitisation special purpose vehicles and other activities auxiliary to financial intermediation. Sterling deposits from and sterling loans and advances to 'other financial intermediaries' undertaken with banks and building societies in their own financial group are also included in intermediate OFCs. Banks' and building societies' holdings of securities issued by their own securitisation vehicles are also included in intermediate OFCs.
- 8 In Table B, households are defined as individuals, unincorporated businesses other than unlimited liability partnerships (i.e. sole traders) and non-profit institutions serving households (e.g. charities and universities).
- 9 Quarterly M4 excluding intermediate OFCs is calculated as households' M4 (seasonally adjusted) plus private non-financial corporations' (PNFCs') M4 (seasonally adjusted) plus non-intermediate OFCs M4 (seasonally adjusted). For more details see www.bankofengland.co.uk/statistics/Pages/iadb/notesiadb/m4adjusted.aspx. M4Lx (i.e. M4 lending excluding the effects of securitisations and loan transfers) excluding lending to intermediate OFCs is calculated as household M4Lx (seasonally adjusted) plus PNFC M4Lx (seasonally adjusted) plus non-intermediate OFCs' M4Lx, (not seasonally adjusted). For more details see www.bankofengland.co.uk/statistics/Pages/iadb/notesiadb/m4lxadjusted.aspx. Following a review of the seasonal adjustment method for non-intermediate OFCs, changes were made to the seasonally adjusted measures of M4 and M4 lending. The changes are detailed in *Bankstats*, October 2013, 'Modifications to the seasonally adjusted measures of M4 and M4 lending excluding intermediate OFCs', available at www.bankofengland.co.uk/statistics/Documents/ms/articles/art1oct13.pdf.

10 The series codes for data not seasonally adjusted are as follows:

RPQ/RPM	Amounts outstanding	Changes	1m	1Q(ann) /3m(ann)	4Q/12m
M4 excluding intermediate OFCs	B3DQ	B3DS	B3D4	B3D8	B3DC
M4Lx excluding intermediate OFCs	B3DR	B3DT	B3D5	B3D9	B3DD

11 In Table F, the definition of the industry categories follows the Standard Industrial Classification (SIC 2007) and is consistent with the broad industry categories employed by the Office for National Statistics (ONS). Within 'business services', real estate is defined as the 'buying, selling and renting of own or leased real estate' plus 'real estate activities on a fee or contract basis', corresponding to SIC codes 68.1, 68.2 and 68.3. 'Government and other services' comprise ONS divisions O to T (e.g. as published in the ONS Blue Book 2012), which include total government, health and education, and 'other services'. This table excludes intra-MFI sector balances. More detailed industry-level breakdowns of deposits and loans are provided in *Bankstats* tables section C, at www.bankofengland.co.uk/statistics/Pages/bankstats/current/default.aspx. For more information on the data classifications, see Parts IV.1 and IV.2 of the Classification of Accounts Guide available at www.bankofengland.co.uk/statistics/Pages/reporters/default.aspx.

Part two

- 12 In Table I, approvals secured on dwellings are measured net of cancellations. From September 2008, additional monthly gross approvals and cancellations data are available on the Bank's Statistical Interactive Database. See Technical Note 1 for more details.
- 13 The consumer credit data in Tables J and K include input from the Office for National Statistics. Historical data and additional data not presented here can be accessed from www.ons.gov.uk/ons/index.html. Further information on breaks and valuation in consumer credit data can be found at www.bankofengland.co.uk/statistics/Pages/iadb/notesiadb/ltot.aspx.
- 14 Student loans are excluded from the measures of consumer credit presented in this statistical release. Data on UK student loans are published on an annual basis by the Student Loans Company, see www.slco.uk/statistics.aspx. More information is provided in *Bankstats*, July 2012, 'A new measure of consumer credit', available at www.bankofengland.co.uk/statistics/Documents/ms/articles/art1jul12.pdf.

Part three

- 15 Table L shows available data for finance raised by UK PNFCs. The scope of this table includes sterling and foreign currency loans from MFIs, and finance raised through the issuance of sterling and foreign currency equity, bonds and commercial paper in capital markets. Certain sources of finance of PNFCs will be outside the scope of available data for this table, for example, loans advanced by non-UK resident banks or privately raised capital.
- 16 Tables M and N cover MFIs' loans to non-financial businesses including, within these, to small and medium-sized enterprises (SMEs). The definition of 'non-financial businesses' is consistent with the non-financial industry sectors presented in Table F. SMEs are defined as those businesses with an annual debit account turnover on the main business account less than £25 million. Gross lending is defined as loans and advances (including claims made under sale and repurchase agreements) and finance leases granted to UK businesses. More information on the data sources underlying these tables is provided in *Bankstats*, March 2012, 'Lending to Businesses – a new data source', available at www.bankofengland.co.uk/statistics/Documents/ms/articles/art2mar12.pdf.
- 17 A broad description of the lending to businesses measures in Tables C, L, and M and N and the main differences between them is provided in *Bankstats*, August 2014, 'Measures of lending to UK businesses', available at www.bankofengland.co.uk/statistics/Documents/ms/articles/art1sep14.pdf.