



Working Paper no. 290

UK monetary regimes and macroeconomic stylised facts

Luca Benati

March 2006

Bank of England

UK monetary regimes and macroeconomic stylised facts

*Luca Benati**

Working Paper no. 290

* Bank of England, Threadneedle Street, London, EC2R 8AH.
Email: luca.benati@bankofengland.co.uk.

The views expressed in this paper are those of the author, and not necessarily those of the Bank of England. I wish to thank Peter Andrews, Mike Artis, Charlie Bean, Michael Bordo, Forrest Capie, Tim Cogley, Michael Ehrmann, William Gavin, Marvin Goodfriend, Refet Gürkaynak, Charles Goodhart, Peter Ireland, Giorgio Primiceri, Ricardo Reis, Samuel Reynard, Peter Sinclair, Frank Smets, James Stock, participants at seminars at the 2005 meetings of the Society for Computational Economics, the World Congress of the Econometric Society, Bank of England, HM Treasury, and University of St. Andrews, and especially Lucrezia Reichlin and Geoffrey Wood for useful comments and discussions. Thanks to Kath Begley for outstanding research assistance with the literature and with data collection. This paper was finalised on 28 October 2005.

The Bank of England's working paper series is externally refereed.

Information on the Bank's working paper series can be found at
www.bankofengland.co.uk/publications/workingpapers/index.htm.

Publications Group, Bank of England, Threadneedle Street, London, EC2R 8AH;
telephone +44 (0)20 7601 4030, fax +44 (0)20 7601 3298, email mapublications@bankofengland.co.uk.

Contents

Abstract	3
Summary	4
1 Introduction	6
2 Related literature	9
3 A brief history of UK monetary regimes	10
4 Monetary regimes and macroeconomic facts	15
5 Conclusions	32
Appendix: The data set	34
Tables and charts	38
References	58

Abstract

We exploit the marked changes in UK monetary arrangements since the metallic standards era to investigate continuity and changes across monetary regimes in key macroeconomic stylised facts in the United Kingdom. We find that, historically, inflation persistence has been the exception, rather than the rule, with inflation estimated to have been highly persistent only during the period between the floating of the pound, in June 1972, and the introduction of inflation targeting, in October 1992. As a corollary, our results clearly reject Mishkin's explanation for time variation in the extent of the Fisher effect, favouring instead Barsky's theory. We document a remarkable stability across regimes in the correlation between inflation and the rates of growth of both narrow and broad monetary aggregates at the very low frequencies, thus countering the Whiteman-McCallum criticism of Lucas. The post-1992 inflation-targeting regime appears to have been characterised, to date, by the most stable macroeconomic environment in recorded UK history, with the volatilities of the business-cycle components of real GDP, national accounts aggregates, and inflation measures having been, post-1992, systematically lower than for any of the pre-1992 monetary regimes/historical periods, often markedly so, as in the case of inflation and real GDP. The Phillips correlation between inflation and unemployment was flattest under the gold standard, steepest between 1972 and 1992. In line with Ball, Mankiw and Romer, evidence points towards a positive correlation between mean inflation and the steepness of the trade-off. We show how Keynes, in his dispute with Dunlop and Tarshis on real wage cyclicalities, was entirely right: during the inter-war period, real wages were strikingly countercyclical. By contrast, under inflation targeting they have been, so far, strongly procyclical.

Key words: Inflation; monetary policy; Lucas critique; frequency domain.

JEL classification: E30; E32.

Summary

The UK historical experience, with the remarkable variety of its monetary arrangements over the course of the past few centuries — from the *de facto* silver standard prevailing until 1717, up to the post-October 1992 inflation-targeting regime — and the high quality of its historical data, provides a unique ‘macroeconomic laboratory’ for the applied monetary economist. This paper exploits the marked changes in UK monetary arrangements since the metallic standards era to investigate continuity and changes across monetary regimes in key macroeconomic stylised facts in the United Kingdom. Our main findings may be summarised as follows.

First, the post-1992 inflation-targeting regime appears to have been characterised, to date, by the most stable macroeconomic environment in recorded UK history. Since 1992, the volatilities of the business-cycle components of real GDP, national accounts aggregates, and inflation measures have been, post-1992, systematically lower than for any of the pre-1992 monetary regimes or historical periods, often markedly so, as in the case of inflation and real GDP. The comparison with the period between the floating of the pound *vis-à-vis* the US dollar (June 1972) and the introduction of inflation targeting (October 1992) is especially striking, with the standard deviations of the business-cycle components of real GDP and inflation having fallen by about 50 and 70 per cent, respectively.

Second, the so-called Phillips correlation between unemployment and inflation at business-cycle frequencies appears to have been weakest under the gold standard, and strongest between 1972 and 1992. Under inflation-targeting the correlation has exhibited, so far, the greatest extent of stability in recorded history. In line with Ball, Mankiw and Romer, evidence points, overall, towards a positive correlation between average inflation and the strength of the Phillips correlation, both across monetary regimes and over time (especially over the post-WWII era).

Third, historically inflation persistence — broadly speaking, the tendency for inflation to be comparatively high (low) in one period, having been comparatively high (low) in previous periods — appears to have been the *exception*, rather than the rule. Inflation is only found to have been very highly persistent *only* during the period between the floating of the pound and the introduction of inflation targeting. Under inflation targeting, inflation exhibits little or no persistence based on all the price indices we consider. In line with a recent, and growing,

literature, in particular the recent work of Cogley and Sargent, and in contrast with the ‘traditional’ position of, eg, Fuhrer and Moore or Blanchard and Gali, our results provide compelling evidence that high inflation persistence is *not* an intrinsic, structural feature of the economy. Instead, the extent of inflation persistence may crucially depend on the monetary regime in place over the sample period.

Fourth, we document a remarkable stability across regimes in the correlation between inflation and the rates of growth of both narrow and broad monetary aggregates at the very low frequencies. The exception is base money growth under the current inflation-targeting regime, for which the correlation clearly appears to have been, so far, negative. Our results, in particular, suggest that a key finding in Rolnick and Weber, a stronger correlation between inflation and the rates of growth of monetary aggregates under fiat standards than under commodity standards, may find its origin in their exclusive focus on the raw data (in other words, in their failure to distinguish between the different frequency components of the data).

Finally, we show how Keynes, in his dispute with Dunlop and Tarshis on real wage cyclicality, was entirely right: during the inter-war period, real wages were strikingly countercyclical. By contrast, under inflation targeting they have been, so far, strongly procyclical.

1 Introduction

The Lucas research programme—as articulated in Lucas (1977) and Lucas (1980a)—is based on the notion of, first, establishing a set of macroeconomic ‘stylised facts’ in the most neutral and atheoretical way possible, and second, building fully specified artificial economies capable of replicating them. A key practical problem with the implementation of the Lucas programme is distinguishing between those stylised facts which are reasonably invariant to changes in the policy regime—and might therefore be regarded, for modelling purposes, as structural in the sense of Lucas (1976)—and those which are not. The most prominent example of such a problem is probably the issue of inflation persistence. Ten years after Fuhrer and Moore’s seminal paper, the macroeconomic profession is still deeply divided between those who, like Fuhrer and Moore (1995) originally, and more recently Mankiw and Reis (2002), believe a high extent of inflation persistence is an *intrinsic*, structural feature of modern economies, and as such should be ‘hardwired’ into the structure of general equilibrium models, and those who, on the contrary, maintain that other, policy-related mechanisms may lie at the root of the high persistence observed over the past few decades—eg, either a policymaker ‘playing the Phillips curve game’ and learning and forgetting the natural rate hypothesis, as in the work of Sargent and his co-authors,⁽¹⁾ or a public gradually learning about shifts in the monetary policy rule, as in Erceg and Levin (2003). Given that being capable of correctly identifying structures invariant to the Lucas critique is necessary in order to be able to perform meaningful comparisons between alternative policy regimes, the fact that after ten years the profession is still deeply mired in the inflation persistence controversy clearly shows the relevance of this issue.

The logical solution to this problem is to compare the macroeconomic stylised facts generated by an economy under alternative monetary regimes. Although alternative monetary arrangements cannot truly be regarded as ‘natural experiments’—the adoption of a specific policy regime is always, to a greater or lesser extent, dictated by the specific historical circumstances the policymaker is facing—still, a comparison between the reduced-form properties exhibited by a macroeconomic system under alternative monetary rules provides important information for the issue at hand.

Under this respect, the UK experience should be regarded as invaluable for two reasons. First, the

(1) See in particular Sargent (1999), Cho, Williams and Sargent (2002), and Sargent and Williams (2003).

dramatic changes in its monetary arrangements over the course of the past few centuries—documented in Section 3 below—from the *de facto* silver standard prevailing until 1717, up to the post-October 1992 inflation-targeting regime. Second, the excellent quality of its historical data, compared both with other European countries and, especially, with the United States. Thanks to its having been, for the largest portion of the XIX century, the most powerful and advanced nation in the world, the United Kingdom is the only country for which (eg) we have not one, but *three* alternative national accounts systems for the gold standard era, based on output, income, and expenditure respectively—see Mitchell (1988).

Based on a unique data set (detailed in the appendix)—which we either recovered from original, hard-copy sources, or we downloaded from the *NBER Historical Database* on the web—in this paper we use both time and frequency-domain techniques to characterise continuity and changes across monetary regimes in key macroeconomic stylised facts in the United Kingdom since the metallic standards era. Only one stylised fact—the high correlation between inflation and the rates of growth of both narrow and broad monetary aggregates at the very low frequencies—emerges as remarkably invariant to changes in the policy regime and, as such, should be regarded as structural in the sense of Lucas (1976). All other facts, on the other hand, exhibit a sometimes marked variation across regimes. In particular:

(i) High inflation persistence clearly appears to have been, historically, the *exception*, rather than the rule, with inflation estimated to have been very highly persistent only during the period between the floating of the pound, in June 1972, and the introduction of inflation targeting, in October 1992. Interestingly, under inflation targeting inflation is estimated to have been, so far, slightly *negatively* serially correlated based on all the price indices we consider.

(ii) As a corollary, our results on inflation persistence clearly contradict Mishkin's (1992) explanation for time variation in the extent of the Fisher effect—based on the notion that inflation and interest rates are cointegrated—while they are largely compatible with Barsky's (1987) position, stressing the link between inflation persistence, its extent of R^2 -forecastability, and the presence or absence of a Fisher effect as captured by Fama (1976) regressions.

(iii) The Phillips correlation between unemployment and inflation at the business-cycle frequencies appears to have been flattest under the gold standard, steepest between 1972 and 1992.

In line with Ball, Mankiw and Romer (1988), evidence points towards the existence of a positive correlation, especially over the post-WWII era, between mean inflation and the slope of the trade-off.

(iv) The real wage was markedly countercyclical during the inter-war period—thus clearly showing that Keynes, in his dispute with Dunlop and Tarshis, was absolutely right, at least concerning the period in which he was writing—while it has been, so far, procyclical under inflation targeting. As for other regimes/periods it displayed some evidence of procyclicality under Bretton Woods, but no consistent pattern either between 1972 and 1992 or under the gold standard.

Our results on the correlation between money growth and inflation at the very low frequencies also suggest that a key finding in Rolnick and Weber (1997), a stronger correlation between inflation and the rates of growth of monetary aggregates under fiat standards than under commodity standards, may find its origin in their exclusive focus on the raw data (in other words, in their failure to distinguish between the different frequency components of the data). As we show, under the gold standard the correlation between inflation and money growth at the very low frequencies had been remarkably high both for base money (0.94) and for M3 (0.97).

Finally, extending backwards in time to the metallic standard era the analysis of Benati (2004), we document how the post-1992 inflation-targeting regime has been characterised, to date, by the most stable macroeconomic environment in recorded UK history, with the volatilities of the business-cycle components of real GDP, national accounts aggregates, and inflation measures having been, post-1992, systematically lower than for any of the pre-1992 monetary regimes/historical periods, often—as in the case of inflation and real GDP—markedly so.

The paper is organised as follows. The next section provides a brief overview of the literature on business-cycle stylised facts. Section 3 presents a brief chronology of UK monetary arrangements from the second half of the XVII century up to the current inflation-targeting regime. In Section 4 we illustrate and discuss empirical evidence on inflation persistence, the Fisher effect, the correlation between inflation and the rates of growth of both narrow and broad monetary aggregates within several frequency bands, the amplitude of business-cycle fluctuations, the Phillips correlation between inflation and unemployment at the business-cycle frequencies, and the cyclicity of the real wage. Section 5 concludes.

2 Related literature

The papers most closely related to the present work are Backus and Kehoe (1992), Bergman, Bordo and Jonung (1998), Basu and Taylor (1999), and Bordo and Schwartz (1999).⁽²⁾ Based largely on linear filtering techniques, these papers produce business-cycle stylised facts for several countries since the second half of the XIX century. There are, however, several differences between these papers and the present one. At a general level, first, to the very best of our knowledge, the vast majority of the series in our data set have never been analysed before. Second, while all the four previously mentioned papers exclusively analyse annual data, in order to obtain more precise results we also analyse, whenever possible, quarterly or monthly data. This is especially important for the inter-war period and the inflation-targeting regime, for which the comparatively short length of the subsamples may cast doubts on the reliability of results based on annual data. Third, we focus exclusively on the United Kingdom, so that—unlike the above-mentioned papers—the breakdown of the overall sample period reflects the evolution of UK monetary arrangements over the past several hundred years.

Entering into details, Backus and Kehoe (1992) investigate business-cycle fluctuations for a sample of ten countries, dividing the overall sample period into pre-WWI, inter-war, and post-WWII subperiods. They filter the data based on the Hodrick-Prescott filter—setting however $\lambda=100$, instead of the optimal value of 6.25 subsequently suggested by Ravn and Uhlig (2002)—and focus on the amplitude of output fluctuations, and on the co-movements of expenditure components, price levels, inflation rates, and monetary aggregates with real GDP/GNP. As for inflation persistence, they only report the first autocorrelation of inflation rates.

Bergman, Bordo and Jonung (1998) analyse data for 13 countries on real GDP/GNP, national accounts aggregates, the money stock, and consumer prices, filtering the data via the Baxter and King (1999) filter, and dividing the overall sample period into four regimes/periods: the gold standard (up to 1914), the inter-war period (1919-39), Bretton Woods (1945-71), and the period of

(2) Based on HP-filtering, Blackburn and Ravn (1992) document a series of business-cycle regularities for the post-WWII UK along the lines of Hodrick and Prescott (1997) and Kydland and Prescott (1990). However, first, their sample period, 1956:1-1990:1, ends well before the introduction of inflation targeting; and second, they do not split their sample around the time of either the collapse of Bretton Woods, in August 1971, or of the floating of the pound, in June 1972, so that no investigation of the changing nature of UK business-cycle fluctuations across regimes/periods is performed. In previous related work—Benati (2004)—we used endogenous break tests and band-pass filtering techniques to investigate the evolution of UK macroeconomic performance over the post-WWII era, but we did not make any attempt to draw implications for business-cycle research.

floating (post-1971). Both for money and prices, they look at filtered log levels. They focus on the amplitude of business-cycle fluctuations, the co-movements of other variables with real GDP/GNP, relative volatilities, and international co-movements. One problem with their data set is that they use, as a measure of real GNP, Feinstein's (1972) expenditure-based estimate⁽³⁾ which, as stressed by Backus and Kehoe (1992), and as we briefly discuss in Section 3, should reasonably be regarded as inferior to the one we use, Feinstein's 'compromise estimate'.

Basu and Taylor (1999) analyse data on output, prices, real wages, exchange rates, total consumption (public plus private), investment and the current account for 15 countries since 1850 or later, dividing the overall sample by monetary regime as Bergman, Bordo and Jonung (1998), and filtering the data via the Baxter-King filter. They report results on the volatility and persistence of filtered series—in other words, they look at the persistence (as measured by the first autocorrelation) of filtered log prices, instead of inflation persistence—and on their co-movement with output.

Bordo and Schwartz (1999) analyse annual data for five countries, dividing the overall sample by monetary regime as in the previous two papers. They only analyse raw data, and report simple means and standard deviations by regime/period. Results for inflation persistence are based on AR(1)'s estimated via simple OLS, while persistence in the price level is measured via the Cochrane (1988) variance ratio estimator. Given the short length of most regimes/periods, however, results based on the variance ratio estimator—which, it is important to stress, is designed to capture *long-run* properties of a series—are probably of limited reliability.

3 A brief history of UK monetary regimes

Our data set starts in 1661, five years before the Great Fire of London, when the United Kingdom was operating under a *de facto* silver standard and without a central bank. The Bank of England was created on 27 July 1694⁽⁴⁾ and was given a partial monopoly on banknote issue in England and Wales via the acts of Parliament of 1708 and 1709, which made it unlawful for companies or

(3) See Feinstein (1972, Table 2).

(4) The creation of the Bank of England was due to the strained financial position of the English Crown. When King William III and Queen Mary II ascended to the throne, in 1688, the state of public finances was dire, and the system of money and credit was in disarray. William Paterson, a prominent businessman, proposed a loan of £1,200,000 to the government: in return for the loan, the subscribers would be incorporated as the 'Governor and Company of the Bank of England'. The money was raised in a few weeks, and the Royal Charter was sealed on 27 July, 1694. The Bank of England opened for business with 17 clerks and 2 gatekeepers.

partnerships of more than six persons to set up banks and issue banknotes.⁽⁵⁾ The *de facto* silver standard prevailed until 1717, when the United Kingdom accidentally switched to a *de facto* gold standard ‘by the unintended overvaluation of gold at the mint [...] by the Master of the Mint, Sir Isaac Newton.’⁽⁶⁾ The *de facto* gold standard prevailed until the wars with France of the late XVIII century, when, on 26 February 1797, the government relieved the Bank of England from its legal obligation of converting notes into gold on demand. The ‘suspension period’—during which the gold standard was legally established with the Coinage Act of July 1816, after the end of the Napoleonic wars—lasted until 1 May 1821, when convertibility was restored at the pre-war parity. The *de jure* gold standard then prevailed until 6 August, 1914, when at the outbreak of World War I gold convertibility was again suspended.

During the WWI period, the price level increased by 107.7% between July 1914 and July 1919,⁽⁷⁾ compared with the 64.2% increase between 1797 and the peak year, 1813, at the time of the Napoleonic wars.⁽⁸⁾ After a sharp deflation at the very beginning of the 1920s,⁽⁹⁾ during which the price level⁽¹⁰⁾ fell by 36.5% from the peak of November 1920 to November 1923, the Conservative government led by Stanley Baldwin, within which Winston Churchill was serving as the Chancellor of the Exchequer, restored the gold standard at the pre-war parity on 28 April 1925.⁽¹¹⁾ The dramatic economic contraction of 1930-31, and a run on sterling, led however the United Kingdom to finally abandon gold parity on 21 September 1931.⁽¹²⁾ During the period following its abandonment of the gold standard, the United Kingdom became the centre of the so-called ‘sterling area’, which in 1933 comprised the countries of the British Empire (with the exception of Canada and Newfoundland), most of the Scandinavian and Baltic countries, and a few other countries (the sterling area lost all its European members soon after the start of WWII).

The aftermath of WWII saw two major changes in UK monetary arrangements. First,

(5) In 1844, the Bank Charter Act—under which no new banks of issue could be established, and existing banks were barred from expanding their issue—allowed the Bank of England to gradually achieve full monopoly on note issue.

(6) Bordo and Kydland (1996, page 65).

(7) Based on the seasonally unadjusted monthly retail price index from Capie and Webber (1985)—see the data appendix.

(8) Based on the Schumpeter (1938) index for prices of consumer goods—see the data appendix.

(9) On the inter-war period see Eichengreen (1992).

(10) Based, again, on the same Capie-Webber monthly seasonally unadjusted retail price index.

(11) For a scathing critique of the decision to restore gold convertibility at the pre-war parity, see Keynes (1925).

(12) Between November 1929 and August 1931 *The Economist’s* index of business activity fell from 1,135 to 980 (-13.7% over a period of 21 months), while the percentage of insured workers unemployed increased from 10.6% to 21.4% (both series are seasonally adjusted). For an extensive account of this episode see Cairncross and Eichengreen (2003).

nationalisation of the Bank of England, with ownership of the Bank being transferred to the Treasury on 1 March 1946. Second, on 18 December 1946, the beginning of Bretton Woods, with the declaration of the par values *vis-à-vis* the US dollar on the part of 32 member countries. Full convertibility of sterling, at the rate of \$4.03 to the pound, was introduced on 15 July 1947 in accord with Clause 8 of the Anglo-American Loan Agreement of December 1945, but was abandoned a few weeks later, on 20 August 1947, due to massive capital outflows. Full external convertibility of sterling then had to wait until 27 December 1958, generally regarded as the starting date of the fully functioning Bretton Woods regime.⁽¹³⁾ The period until the collapse of Bretton Woods then saw another devaluation of sterling on 19 November 1967, from \$2.80 to \$2.40. After President Nixon's closing of the 'gold window', on 15 August 1971,⁽¹⁴⁾ the parity with the dollar was temporarily increased to \$2.61 at the Smithsonian Agreement of 17-18 December 1971, being finally abandoned on 23 June 1972.

The period between 23 June 1972 and the introduction of inflation targeting, on 8 October 1992, was characterised by a succession of different monetary arrangements and measures. After 23 June 1972, UK membership of the 'snake'—a system of currency bands created by the six founding members of the European Economic Community, and also comprising the United Kingdom, Denmark, and Ireland—lasted only six weeks, after which the United Kingdom resorted to a fully floating rate. Following sterling's exit from the snake, monetary targets, first contemplated in the letter of intent with the IMF signed by the UK government following the 1967 devaluation, received renewed attention, but it was not until Margaret Thatcher that they acquired prominence, in the form of targets for sterling M3 growth.⁽¹⁵⁾ As stressed however by Cairncross and Eichengreen (2003, pages xxv-xxvi), '[h]ow to formulate monetary policy in these circumstances was never clear. Not only did British policymakers lack the constraint imposed by an exchange rate commitment, but they failed to develop another reliable means of orientation. Sterling M3 turned out to be unworkable: controlling it was too difficult, the link to inflation was too loose.

(13) On 18 September 1949 sterling devalued from \$4.03 to \$2.80. Sterling's devaluation was followed by similar devaluations by about 30 other countries.

(14) By 'gold window' is meant the commitment on the part of the US, enshrined in the Bretton Woods treaty, to convert any amount of dollars into gold at the official parity. During the second half of the 1960s such a commitment became less and less credible as the US' trading partners kept accumulating larger and larger stocks of dollars. This led to the abandonment of the promise of redemption of dollars into gold in August 1971, and therefore to the ultimate demise of the Bretton Woods system.

(15) The UK government first committed itself to targets for domestic credit expansion in the letter of intent with the IMF of December 1976, at the time of the negotiations on the repayment of the \$5 billion loan the United Kingdom obtained from the Group of Ten industrialised countries in June 1976.

Narrow money (M0) worked no better [...].⁽¹⁶⁾ Exchange rate volatility only compounded the problems associated with monetary targeting, thus laying the ground for the United Kingdom's entry into the exchange rate mechanism (ERM) of the European Monetary System.⁽¹⁷⁾

The United Kingdom joined the ERM on 8 October 1990 at a parity of DM 2.95 per pound, and suspended ERM membership on 'Black Wednesday', 16 September 1992, following a massive wave of currency speculation. Three weeks after suspension of ERM membership, on 8 October 1992, the Conservative government led by John Major established the first direct inflation target, as a range of 1%-4% for annual RPIX⁽¹⁸⁾ inflation. On 14 June 1995, the Chancellor modified the inflation target for annual RPIX inflation to 2.5% or less. On 6 May 1997, five days after Labour's election victory, the new Chancellor of the Exchequer, Gordon Brown, granted the Bank of England operational independence, and announced the creation of the Monetary Policy Committee (henceforth, MPC), which first met on 5 June⁽¹⁹⁾. On 12 June, the Chancellor outlined the remit for the MPC as a symmetrical target of 2.5% for annual RPIX inflation. A system of accountability was also established, according to which fluctuations in RPIX annual inflation in excess of $\pm 1\%$ around the target should be explained by the Governor in an open letter to the Chancellor, in which appropriate measures designed to put inflation back on target should also be detailed. The most recent period has seen only a minor change, the switch to an inflation target of 2% for annual CPI⁽²⁰⁾ inflation. Announced by the Chancellor on 10 December 2003, the switch took effect in January 2004.

Based on the previous discussion, in what follows we consider the following monetary regimes or historical periods:

(i) *De facto* silver standard: from the beginning of our sample up until 1717.

(ii) *De facto* gold standard: from 1718 up until the beginning of the suspension period, on 26

(16) For a discussion of the overshooting of the sterling M3 targets, see for example Sargent (1983).

(17) Before joining the ERM, the United Kingdom informally 'shadowed' the Deutsche mark between March 1987 and March 1988.

(18) 'Retail prices index, all items excluding mortgage interest payments'.

(19) A key characteristic of the new UK monetary framework is that MPC members are held individually accountable by Parliament for the votes they cast (individual MPC members' votes are indeed published). As stressed by the Bank's Director of Markets and MPC member, Paul Tucker, during a recent *Inflation Report* press conference, this 'provides an incredibly powerful incentive for each individual MPC member to get it right'.

(20) The key difference between the CPI and RPIX is that the underlying sectoral price indices are given different weights.

February 1797.

(iii) *De jure* gold standard: from 1 May 1821 up to the beginning of the second suspension period, on 6 August 1914.

(iv) Inter-war period: from the constitution of the Irish Free State as a British dominion, on 6 December 1921, to the United Kingdom's declaration of war on Germany, on 3 September 1939.

(v) Bretton Woods regime: from 18 December 1946 up to the floating of the pound *vis-à-vis* the US dollar, on 23 June 1972.

(vi) From 23 June 1972 to the introduction of inflation targeting, on 8 October 1992.

(vii) Inflation-targeting regime: from 8 October 1992 to the present.

Several issues deserve further discussion. First, as for the starting date of the inter-war period, the precise date of the separation of Southern Ireland's 26 counties from the rest of the then United Kingdom is not entirely uncontroversial. The border between the Irish Free State (comprising the 26 counties) and the six counties of Northern Ireland was fixed in December 1925, which could therefore reasonably be regarded as an alternative starting date. The key motivation for starting the inter-war period in December 1921 is for reasons of homogeneity, as for several of our series—for example, those from Friedman and Schwartz (1982)—the original source explicitly states that Northern Ireland is included up to 1921, and excluded thereafter.

Second, as the previous exposition makes clear, the precise starting date of the United Kingdom's full membership of the Bretton Woods regime is not entirely clear-cut. In particular, an alternative starting date could be conceived, 27 December 1958, when the Bretton Woods regime began functioning fully and properly.

Finally, although the period between the floating of the pound and the introduction of inflation targeting was by no means perfectly internally homogeneous, we have decided to treat it as a single period mainly for two reasons. First, the short length of several of the subperiods would prevent us from making reasonably robust statements. (Exactly for the same reason we treat the

inter-war period as a unique ‘regime’, in spite of the several, previously documented changes during those years.) Second, breaking it down into subperiods would not be entirely uncontroversial—this is especially true for the period of monetary targeting, which did not have a clear-cut beginning or end.

4 Monetary regimes and macroeconomic facts

Chart 1 shows the logarithm of the UK price level and UK inflation since the times of the Great Fire of London (1666), and Table A reports average values for inflation rates, interest rates, and for the rates of growth of monetary aggregates by monetary regime/historical period. With the single exception of the ‘suspension period’ between 1797 and 1821, the pre-WWI era exhibited a remarkable stability in the average level of prices, with (eg) the Elisabeth Schumpeter index for the prices of consumer goods *decreasing* slightly from 109 in 1661 to 104.92 in 1823 (−3.7% overall, over a period of 162 years), and the ONS’ composite price index slightly increasing from 9.5 in 1823 to 9.8 in 1913 (+3.2% overall, over a period of 90 years). As the first three columns of Table A show, under metallic standards—either *de jure* or *de facto*, and based on either gold or silver—average inflation rates based on any price index had invariably been remarkably low, in several cases having been negative. The post-WWII era, by contrast, has seen the price level literally take off, with increases between 1947 and 2003 ranging from 2,313% based on the RPI, to 2,423.2% based on the GDP deflator. The 1972-92 period was characterised by the highest average inflation rates, interest rates, and rates of monetary growth in recorded history, while the inter-war era exhibited the lowest inflation rates and rates of monetary growth, with average inflation having systematically been negative based on all of the price indices we consider. The inflation-targeting regime, by contrast, does not stand out in any particular way: as we will see in Section 4.4, the unique, distinctive characteristic of this regime is indeed a different one: a remarkably low volatility of business-cycle fluctuations for most of the series. But we start our analysis from a topic currently at the top of the macroeconomic research agenda: inflation persistence.

4.1 *Inflation persistence*

Inflation persistence has been, over the past decade, one of the most intensely investigated topics in the field of macroeconomics. If, as argued by, eg, Fuhrer and Moore (1995),⁽²¹⁾ high inflation

(21) An earlier paper, influential in establishing the conventional wisdom notion of inflation as a highly persistent process, was Nelson and Plosser (1982).

persistence is an *intrinsic*, structural characteristic of industrial economies, then a DSGE model’s ability to replicate it is indeed a crucial test of adequacy. In recent years, however, several papers—see in particular Cogley and Sargent (2002, 2005)—have produced empirical evidence at odds with the notion of inflation as an intrinsically persistent process, strongly suggesting instead that, at least in the United States, high inflation persistence may have been ‘chronologically concentrated’ (so to speak) around the time of the Great Inflation of the 1970s.⁽²²⁾

It is important to stress that, at a very general level, the notion that inflation may be intrinsically persistent should be seen, at the very least, with suspicion, for the simple reason that, on strictly conceptual grounds, the stochastic properties of inflation cannot possibly be thought of as being independent of the underlying monetary regime. A price-level targeting regime, for example, would make the price level (trend) stationary, thus causing inflation to be perfectly negatively serially correlated. By the same token, it appears implausible that inflation may be highly persistent under an inflation-targeting regime in which the central bank pre-emptively and aggressively fights any deviation of inflation from target. The adoption, since the end of the 1980s, of inflation-targeting regimes in several developed and emerging economies raises therefore doubts on the notion that, today, inflation may be, in these countries, very highly persistent.

Table B reports, for the inflation series in our data set, parametric measures of persistence based on univariate $AR(p)$ representations by monetary regime/historical period.⁽²³⁾ For each inflation series we estimate via OLS the following $AR(p)$ model⁽²⁴⁾

$$\pi_t = \mu + \phi_1\pi_{t-1} + \phi_2\pi_{t-2} + \dots + \phi_p\pi_{t-p} + u_t \quad \mathbf{(1)}$$

selecting the lag order based on the Schwartz information criterion,⁽²⁵⁾ for a maximum possible number of lags $P=6$. For each series, the table reports the median-unbiased estimate of our preferred measure of persistence—which, following Andrews and Chen (1994), we take it to be the sum of the autoregressive coefficients⁽²⁶⁾—computed via the Hansen (1999) ‘grid bootstrap’

(22) See also Klein (1975), Barsky (1987), Alogouskoufis and Smith (1991), Evans and Wachtel (1993), and Levin and Piger (2003).

(23) Given the short length of the inflation-targeting and inter-war subperiods, for either subperiod we only report results based on quarterly data.

(24) In the case of the quarterly wholesale price index from the NBER historical database, of the retail prices index, and of the CPI, which are all seasonally unadjusted, we augment **(1)** with three seasonal dummies. In order to check for robustness of the results, we redid the entire analysis seasonally adjusting the series regime-by-regime *via* ARIMA X-12. These results (not reported here but available from the author upon request) are qualitatively the same as those reported in Table B.

(25) Specifically, the lag order has been chosen based on the model estimated over the full sample.

(26) As shown by Andrews and Chen (1994), the sum of the autoregressive coefficients maps one-to-one into two

procedure, together with the 90%-coverage confidence interval.⁽²⁷⁾ As Table B clearly shows, historically, high inflation persistence appears to have been the *exception*, rather than the rule, with inflation estimated to have been very highly persistent only during the period between the floating of the pound, in June 1972, and the introduction of inflation targeting, in October 1992.

Specifically,

(i) the inflation-targeting regime exhibits some mildly *negative* serial correlation based on either the retail prices index, the CPI, or the GDP deflator.⁽²⁸⁾ In all cases, the null of white noise cannot be rejected at the 90% level, and in all cases the upper limit of the 90% confidence interval is well below one.

(ii) In stark contrast with the current regime, the period between 1972 and 1992 exhibits very high persistence based on each single series, with point estimates of ρ ranging from 0.79 to 0.96, and upper limits of 90% confidence intervals ranging between 0.98 and 1.05.

(iii) Persistence appears as entirely absent under metallic standards, either *de facto* or *de jure*, and based on either gold or silver.⁽²⁹⁾ The *de facto* gold standard, in particular, displays a mild, although not statistically significant, negative serial correlation based on all three inflation series, while results for the *de facto* silver standard and the *de jure* gold standard are, under this respect, not consistent across series.

(iv) The turbulent inter-war period only displays a mildly positive serial correlation, and for both inflation series the null of a unit root can be clearly rejected.

alternative measures of persistence, the cumulative impulse-response function to a one-time innovation and the spectrum at the frequency zero. Andrews and Chen (1994) also contain an extensive discussion of why an alternative measure favoured, eg, by Stock (1991), the largest autoregressive root, may provide a misleading indication of the true extent of persistence of the series depending on the specific values taken by the other autoregressive roots.

(27) Specifically, following Hansen (1999, section III.A) we recast **(1)** into the augmented Dickey-Fuller form

$$\pi_t = \mu + \rho\pi_{t-1} + \gamma_1 \Delta\pi_{t-1} + \dots + \Delta\gamma_{p-1}\pi_{t-(p-1)} + u_t$$

—where ρ is defined as the sum of the AR coefficients in **(1)**—and we simulate the sampling distribution of the t -statistic $t=(\hat{\rho}-\rho)/\hat{S}(\hat{\rho})$, where $\hat{\rho}$ is the OLS estimate of ρ , and $\hat{S}(\hat{\rho})$ is its estimated standard error, over a grid of possible values $[\hat{\rho}-3\hat{S}(\hat{\rho}); \hat{\rho}+3\hat{S}(\hat{\rho})]$, with step increments equal to 0.01. For each of the possible values in the grid, we consider 1,000 replications. Both the median-unbiased estimates of ρ and the 90% confidence intervals reported in Table B are based on the bootstrapped distribution of the t -statistic.

(28) This is consistent with the notion that the current monetary regime contains, *de facto*, a slight component of mean-reversion in the price level.

(29) One *caveat* is that the likely presence of measurement error in old (log) price series automatically introduces negative serial correlation in their first differences, thus biasing downwards persistence estimates. Unfortunately, it is not clear at all how to even gauge an idea of the likely extent of such an effect.

(v) Bretton Woods displays some evidence of serial correlation, with point estimates of ρ ranging from 0.21 to 0.56, and two cases in which it is not possible to reject the null of a unit root, but the evidence is clearly nowhere nearly as strong and consistent as that for the 1972-92 period.⁽³⁰⁾

These results strongly refute the notion that inflation is *intrinsically* persistent, while they are compatible with the alternative notions that (a) inflation persistence is historically determined, and (b) the extent of persistence found in the data crucially depends on the monetary regime in place over the sample period. In particular, the fact that persistence appears to have been entirely absent under both metallic standards and the current inflation-targeting regime—monetary arrangements providing strong nominal anchors—while it has only appeared during the period between June 1972 and October 1992, characterised initially by the lack of any nominal anchor, and subsequently by shifting and, arguably, only partially credible monetary arrangements, provides strong *prima facie* evidence in favour of the notion that the strength and credibility of the nominal anchor of the system is the key underlying determinant of inflation persistence.⁽³¹⁾ The immediate implication for macroeconomic modelling is that, contrary to the traditional Fuhrer-Moore position, the ability to generate high inflation persistence is *not* a crucial test of adequacy for a macroeconomic model. Rather than needing theories capable of generating very high inflation persistence, what we need is theories/explanations of why persistence has been entirely absent during specific historical periods, while it has only appeared during other periods.

We now turn to the implications of these findings for the Fisher effect.

4.1.1 *Implications for the Fisher effect*

Despite being one of the cornerstones of monetary economics, evidence in favour of the Fisher effect is entirely absent from the pre-Bretton-Woods era, and it only appears after about 1960.⁽³²⁾ As stressed for example by Mishkin (1992), in the US evidence *pro*-Fisher has essentially disappeared after the 1970s. Currently, there are two leading explanations for such a puzzling time

(30) Our results for the post-WWII era are consistent with Cogley, Morozov and Sargent (2003) who, based on a Bayesian random-coefficients VAR with stochastic volatility, detect evidence of a broadly hump-shaped pattern in UK RPI inflation persistence since the beginning of the 1960s. See also the recent work of Osborn and Sensier (2005), who identify a structural break in UK inflation persistence around the time of the introduction of inflation targeting.

(31) For a conceptually related position, see Levin and Piger (2003).

(32) See Ibrahim and Williams (1978), Barthold and Dougan (1986), and especially Barsky (1987). Lack of evidence in favour of the Fisher effect was stressed by Irving Fisher himself, who, in the *Theory of interest*, proposed an explanation based on the notion that agents form inflation expectations based on a long distributed lag of past inflation. In the end, however, Fisher himself was dissatisfied with his own theory—see Fisher (1930).

variation in the extent of the Fisher effect.⁽³³⁾ In both of them, inflation persistence plays a crucial role, although for completely different reasons.

A first explanation, put forward by Mishkin in a series of papers,⁽³⁴⁾ is based on the notion that inflation and nominal interest rates are cointegrated. During certain historical periods they share strong stochastic trends, thus making the Fisher effect apparent. Over different periods, on the other hand, the stochastic trends they have in common are much more subdued, thus causing the Fisher effect to disappear. The fact that, as we have shown in the previous section, a unit root in inflation can be strongly rejected for all regimes/periods except between 1972 and 1992, provides decisive evidence against Mishkin's hypothesis, for the simple reason that, for two series to be cointegrated, they first have to be individually I(1).

A second explanation—due to, eg, Barthold and Dougan (1986), and especially Barsky (1987)—attributes changes in the Fisher effect to changes in inflation forecastability. In order to understand the Barsky-Barthold-Dougan position, consider a world in which the Fisher effect holds by assumption—ie $r_{t,t+k} = rr_{t,t+k} + \pi_{t+k|t}$, with $r_{t,t+k}$, $rr_{t,t+k}$, and $\pi_{t+k|t}$ being the nominal rate prevailing between periods t and $t+k$ (which is known at time t), the *ex-ante* real rate prevailing between the same periods, and expected inflation—and postulate, for the sake of simplicity, the real rate to be constant, so that

$$r_{t,t+k} = \bar{r} + \pi_{t+k|t} \quad (2)$$

By (2), it automatically follows that a *necessary* condition for the Fisher effect to be detectable via the Fama (1976) regression

$$\pi_{t+k} = \alpha + \beta r_{t,t+k} + u_{t+k} \quad (3)$$

of realised inflation on the nominal rate is that inflation be highly forecastable in the R^2 sense—to put it differently, it must be possible to explain a large fraction of its variance based on past information. Consider indeed the extreme case in which inflation follows the white noise process $\pi_t = \epsilon_t$, so that, by assumption, it is completely unforecastable in the R^2 sense. Since, under these circumstances, $\pi_{t+k|t} = 0$, it immediately follows that $r_{t,t+k} = \bar{r}$, so that Fama regressions would produce OLS estimates of β equal to zero at all k even in a world in which the Fisher effect holds

(33) Here we rule out the Friedman and Schwartz (1976) explanation—based on the notion that economic agents only gradually 'learned their Fisher'—on purely logical grounds. The partial disappearance of a Fisher effect in recent years documented in Mishkin (1992) and, for the UK, in the present paragraph, would indeed imply that, over the past two decades, economic agents have somehow 'unlearned their Fisher', which appears implausible to us.

(34) See in particular Mishkin (1992).

by construction! More generally, the value taken by β in the Fama regression **(3)** crucially depends on the extent of inflation R^2 forecastability—which, as stressed by Barsky (1987), is linked to its extent of persistence⁽³⁵⁾—so that, in general, low estimates of β in **(3)** *in no way* can be taken as evidence against the presence of a Fisher effect in the data.

The evidence produced in the previous section of changes in UK inflation persistence over the sample period, which imply corresponding changes in the extent of its forecastability, leads us to expect to find a strong Fisher effect in UK data only between 1972 and 1992, the single period in UK history in which inflation had indeed been very highly persistent. Table C reports results from Fama (1976) regressions by regime/period of the *ex-post* inflation rate prevailing between months t and $t+k$ on a constant and on the nominal rate prevailing over the same period. The use of overlapping data—ie of data for which the interest rate and inflation rate horizon is longer than the one-month sampling frequency—automatically induces serial correlation in the error term, which we tackle via the Andrews (1991) heteroskedasticity and autocorrelation-consistent covariance matrix estimator.⁽³⁶⁾ Finally, given that none of the price series we use is seasonally adjusted, we augment **(3)** with monthly seasonal dummies.

Results in Table C are largely—although not entirely—compatible with the Barthold and Dougan-Barsky hypothesis. As expected, estimates of β have been extremely low, and not significantly different from zero, under the inflation-targeting and Bretton Woods regimes, and markedly higher, and not significantly different from one, between 1972 and 1992. Evidence for the inter-war period appears at first sight puzzling, with *negative* estimates of β for both the three and the six-month maturities, although in neither case they are significantly different from zero at conventional levels. In order to correctly interpret such a result, however, it is important to keep in mind the sheer peculiarity of those years. In particular, first, inflation had been negative for a significant portion of the inter-war period (based on the ONS’ annual composite price index, for example, for 10 years out of 17). Second, for a non-negligible portion of that period—specifically, between the second half of 1934 and the second half of 1938—nominal rates had been essentially flat below one.⁽³⁷⁾ It should therefore come as no surprise that results from Fama regressions

(35) An extended discussion of the relationship between the persistence of a series and its extent of R^2 -forecastability can be found in Granger and Newbold (1986).

(36) Qualitatively similar results based on the Newey and West (1987) covariance matrix estimator are available upon request.

(37) In particular, the three-month rate had stayed between 0.3% and 0.9% with the sole exception of December 1936, when it was equal to 1.1%, while the six-month rate had been between 0.4% and 0.9% (all figures are annualised).

produce such disconcerting results for the inter-war era.

Results for the *de facto* gold standard are instead truly quite puzzling. As we discussed in Section 4.1, all estimates of ρ for that period, ranging between -0.21 and 0.17, clearly point towards the essential white noisiness of inflation under that regime, thus implying, by the Barthold-Dougan-Barsky argument, that estimates of β in Fama regressions should be essentially zero. By contrast, our evidence—although admittedly very limited, and especially imprecise, to the point that the null of $\beta=0$ cannot be rejected at conventional levels—suggests the *possible* presence of a Fisher effect during a period in which the univariate properties of inflation suggest its near-unforecastability.⁽³⁸⁾ Due to the imprecision of the estimate, however, such a result should necessarily be regarded as purely tentative.

4.2 Money growth and inflation

In ‘Two illustrations of the quantity theory of money’,⁽³⁹⁾ Lucas used linear filtering techniques to extract low-frequency components from US M1 growth and CPI inflation over the period 1955-75, uncovering a near one-for-one correlation between the two series at the very low frequencies. He interpreted his evidence as ‘[...] additional confirmation of the quantity theory, as an example of one way in which the quantity-theoretic relationships can be recovered via atheoretical methods from time-series which are subject to a variety of other forces [...]’. In their criticism of Lucas (1980b), McCallum (1984), and especially Whiteman (1984), pointed out how these results, being based on reduced-form methods, were in principle vulnerable to the Lucas (1976) critique, and as such they could not be interpreted as evidence in favour of the quantity theory of money.

The UK experience appears, under this respect, as especially attractive, as the marked variation in its monetary arrangements offers the possibility of effectively countering the Whiteman-McCallum criticism. If the strong correlation between money growth and inflation at the very low frequencies identified by Lucas indeed remained stable across such a marked variation in monetary arrangements, this should be interpreted as *prima facie* evidence that such a correlation is indeed structural in the sense of Lucas (1976).

(38) One possible explanation along the lines of Barsky and Delong (1991) is that the univariate time-series properties of inflation under the gold standard underestimated the true extent of inflation forecastability, in that gold production obviously had forecasting power for inflation under that regime.

(39) Lucas (1980b).

In this section we investigate the evolution across regimes of the correlation between inflation and the rates of growth of both narrow and broad monetary aggregates within three frequency bands, comprising components with periodicities beyond 30 years, between 8 and 30 years, and between 6 quarters and 8 years (traditionally regarded as the business-cycle ones). The approximated band-pass filter we use is the one recently proposed by Christiano and Fitzgerald (2003). Charts 2 to 5 show, for inflation and for the rates of growth of base money, M3, and M4, both the raw series and the three just-mentioned components, while Table D reports cross-correlations by regime/period for both the raw and the filtered data. Two main findings stand out. First, a striking stability in the correlation between inflation and the rates of growth of all monetary aggregates at the frequencies beyond 30 years. Second, some instability at higher frequencies. Specifically,

(i) the components of inflation and money growth beyond 30 years have been systematically and very strongly positively correlated across *all* regimes.⁽⁴⁰⁾ This has held for both narrow and broad monetary aggregates, with the single exception of base money under the current regime, for which the correlation has clearly been, so far, negative (-0.73). Although we do not offer any explanation for such a puzzling finding, we exclude that the result may be a fluke due to an endpoint problem with the band-pass filter: as panel (a) of Chart 2 and Table D clearly show, the result is there, although weaker, even in the raw data.

(ii) The same holds for the frequency band between 8 and 30 years, with the exception of M4, for which the correlation does not exhibit any clear-cut pattern; of M3 under Bretton Woods, for which the correlation turns negative, compared to the previous years; and of base money around WWII and its immediate aftermath, when M0 growth markedly overshot, and then undershot, inflation. This last episode, however, lends itself to a simple explanation, namely the price controls in place around WWII, so that base money first markedly expanded, and then contracted, only partially affecting, in either case, the rate of inflation.

(iii) At the business-cycle frequencies instability has been especially marked in the case of M4 over the post-WWII era—with the business-cycle components of RPI inflation and M4 growth having been contemporaneously *negatively* correlated until the end of the 1980s, and having been instead markedly *positively* correlated since then—less so for M3, with the correlation turning from mildly positive before WWII to mildly negative under Bretton Woods.

(40) It is however important to remember that components beyond 30 years are inevitably comparatively less precisely estimated than components associated with higher frequencies.

How should we interpret such a marked stability across regimes in the correlation between money growth and inflation at very low frequencies? As stressed by Svensson⁽⁴¹⁾ the precise *meaning* to be attributed to the correlation between money growth and inflation crucially depends on the nature of the underlying monetary regime. In the extreme case of a pure monetary targeting regime in which the central bank perfectly controls the money supply, for example, money growth would be exogenous, while inflation would endogenously adjust to it. Under these circumstances, we could legitimately say that ‘money growth causes inflation’. Under a pure inflation-targeting regime in which the central bank perfectly controls inflation, on the other hand, the opposite would be true: inflation would now be exogenous, while money growth would endogenously adjust to it via an equilibrium condition on the money market. Under these circumstances, it would be legitimate to argue that ‘inflation causes money growth’. In general, however, ‘money growth and inflation are both endogenous variables and there is no clear direction of causality’,⁽⁴²⁾ so that the correlations illustrated in Charts 2-5 should be regarded as *purely reduced-form*, without any clear-cut causality running from one variable to the other—with the exception of the inflation-targeting regime, under which inflation should be largely regarded as exogenous.⁽⁴³⁾ However, the fact that the correlations between the very low-frequency components of inflation and of the rates of growth of several monetary aggregates have remained so remarkably stable over long periods of time, comprising markedly different monetary arrangements (with the only exception, so far, of base money growth under inflation targeting), suggest such correlations to find their origin in deep features of the economy—in other words, to be ‘hardwired’ into the model in ways that make them largely independent of the underlying monetary regime.

Especially interesting is, in our view, the strong correlation between the low-frequency components of inflation and the rates of growth of M0 and M3 under the gold standard (see Panels (b) of Charts 2 and 4), clearly suggesting that a key finding in Rolnick and Weber (1997), ‘[...] under fiat standards, the growth rates of various monetary aggregates are more highly correlated with inflation [...] than under commodity standards’,⁽⁴⁴⁾ may find its origin in their exclusive focus on the raw data (in other words, in their failure to distinguish between the different frequency

(41) See, eg, Svensson (2003).

(42) Svensson (2003, page 1,064).

(43) Under the gold standard, on the other hand, money growth, being linked to the evolution of the stock of gold, was partly exogenous and partly endogenous, the former component reflecting exogenous influences on gold production (eg, the invention of the cyanide process in the second half of the XIX century), the latter originating from the self-correcting mechanism intrinsic to metallic standards—see, eg, Fisher (1922) and Barro (1979)—with a negative shock to the price level giving rise to both an increase in extraction activity, and a switch of base metal from non-monetary to monetary uses.

(44) See Rolnick and Weber (1997, page 1,308).

components of the data). As Table D shows, under the gold standard the correlation at the very low frequencies had been remarkably high both for base money (0.94) and for M3 (0.97).

4.3 *The Phillips correlation*

In the spirit of Lucas (1973), and especially Ball, Mankiw and Romer (1988), this section presents evidence on the Phillips trade-off between the cyclical components of inflation and unemployment across monetary regimes. The idea, once again, is to exploit the wide variation in UK monetary arrangements since the metallic standards era to identify a set of stylised facts that any reasonable macroeconomic model should replicate. Panels (a) to (e) of Chart 7 show scatterplots of business-cycle components of unemployment and inflation by monetary regime/historical period together with LAD regression lines, while Table F reports standard deviations of LAD regression residuals by regime/period. Several findings stand out. In particular:

(i) The inflation-targeting regime appears to have been characterised, to date, by the most stable (although not the flattest) unemployment-inflation trade-off in recorded history, with all the observations tightly clustered around the regression line, and a standard deviation of regression residuals between 25.3% and 38.8% of what it had been under previous regimes/periods.

(ii) In stark contrast—again—with the current regime, the period between June 1972 and October 1992 was characterised by both the steepest, and the most unstable trade-off in recorded history, with a slope of the LAD regression line equal to -2.33 and a standard deviation of regression residuals between 1.13 and 3.96 times what it has been under other regimes/periods.

(iii) Not surprisingly, perhaps—given the intrinsic tendency of metallic standards to stabilise the price level⁽⁴⁵⁾—the gold standard was characterised by the flattest trade-off ever, although this came at the price of remarkably large fluctuations in the cyclical component of unemployment (see Table E). A qualitatively similar experience characterised the inter-war period, with a slope of the regression line equal to -0.90, and a similarly large volatility of unemployment fluctuations.

What explains historical changes in the slope of the UK Phillips correlation? Although providing an explanation is beyond the scope of this paper, in line with the cross-country evidence in Ball,

(45) On this see, eg, Barro (1982).

Mankiw and Romer (1988), the UK experience seem to clearly point towards a positive correlation between mean inflation and the slope of the Phillips correlation, with an increase in mean inflation being associated with an increase in the slope of the LAD regression line. Panel (f) of Chart 7 shows a scatterplot of mean inflation and the negative of the LAD regression line across regimes/periods. Although admittedly based on just five observations, evidence clearly suggests a positive correlation between mean inflation and the negative of the slope of the LAD regression line. Chart 8 presents analogous evidence, based on monthly data for rolling ten-year samples,⁽⁴⁶⁾ for both the inter-war era and the post-WWII period. Evidence of a positive correlation is clear for the latter period, much less so for the former.

4.4 *The cyclicity of real wages*

In the second chapter of the *General theory*,⁽⁴⁷⁾ Keynes thus speculated on the relationship between changes in money (ie nominal) and changes in real wages.

[I]n the case of changes in the general level of wages, it will be found, I think, that the change in real wages associated with a change in money-wages, so far from being usually in the same direction, is almost always in the opposite direction. [...] This is because, in the short period, falling money-wages and rising real wages are each, for independent reasons, likely to accompany decreasing employment; [...].

In this passage, Keynes made two conjectures: (1) changes in real and in nominal wages are systematically *negatively correlated*; and (2) real wages are *countercyclical*. As is well known, the first conjecture was refuted by (among others) Dunlop (1938) and Tarshis (1939). Conventional wisdom⁽⁴⁸⁾ holds that Dunlop and Tarshis also refuted Keynes' second conjecture, on the countercyclicity of real wages. Before discussing our results, it is therefore worth spending a few words setting the record straight: while Dunlop and Tarshis convincingly refuted Keynes' first conjecture, a careful reading of their papers clearly shows that *in no way did they ever come close to refuting Keynes' conjecture on the countercyclicity of real wages*. On the contrary, the Postscript in Tarshis (1939)⁽⁴⁹⁾ contains the following passage.

(46) The negative of the slope of the LAD regression line is plotted in correspondence with the mid-point of the ten-year rolling window.

(47) See Keynes (1936, page 10).

(48) See, for example, Sargent (1987), chapter XVIII.

(49) See Tarshis (1939, page 154). It is important to remember that Tarshis' study was based on US data.

Further analysis of the material, undertaken after this note had been set up in proof, brought to light certain results relevant to this enquiry. [...] If changes in man-hours [the cyclical indicator considered by Tarshis] are related to changes in ‘real hourly wages, uncorrected’, [the ‘corrected’ series Tarshis considered in the previous part of the paper controlled for ‘changes in the cost of living that were due to changes in the prices of agricultural products’, so ‘uncorrected’ here means just raw] *a rather high negative association is to be found*. For the period of 75 months, considered above, the coefficient of association is -0.64, and with the exclusion of changes of two-tenths of one per cent or less, the coefficient stands at -0.75. That is to say, *changes in real hourly wages are in general opposite in direction from changes in man-hours of work*. (emphasis added)

Keynes (1939) was well aware of this: after acknowledging (page 34) that, in the light of the results reported by Dunlop and Tarshis, his first conjecture ‘needs to be reconsidered’, he stressed however (page 35) that in the *General theory* he was

[...] dealing with the reaction of real wages to changes in output, and had in mind situations where changes in real and money wages were a reflection of changes in the level of employment caused by changes in effective demand’.

Further, on page 42 he points out that

[...] in the *postscriptum* to his note, Mr. Tarshis explains that whilst real wages tend to move in the same direction as money wages, they move in the opposite direction, though only slightly, to the level of output as measured by man-hours of employment; from which it appears that Mr. Tarshis’s final result is in conformity with my original assumption.

Let us now turn to our results. (Throughout all this section, by ‘real wages’ we mean real *consumption* wages, ie nominal wages deflated by a consumer or retail price index.) Chart 9 plots band-pass filtered business-cycle components of real wages and of two alternative indicators of real economic activity—real GDP for the gold standard and the post-WWII era, and minus the rate of unemployment⁽⁵⁰⁾ for the inter-war period—by monetary regime/historical period since the second half of the XIX century, while Chart 10 shows cross-correlations at leads and lags between the same components plotted in Chart 9. Several findings stand out. First, the striking

(50) Specifically, the series for ‘percentage of insured workers unemployed’ from Table 4.5 of Capie and Collins (1983). Qualitatively similar results based on an alternative real activity indicator, *The Economist*’s index of business activity, are available upon request. The key reason why we have preferred to use the rate of unemployment as a cyclical indicator is that *The Economist*’s index exhibits an ‘extreme’ behaviour in 1926, collapsing from 106 in April to 44.5 in the following month, slowly recovering up to 102 in December.

countercyclicality of real wages during the inter-war period, which, together with the previously mentioned results for the United States reported in Tarshis' (1939) *Postscript*, dramatically confirms the correctness of Keynes' conjecture for the inter-war era. Second, the clear procyclicality of real wages under the current inflation-targeting regime. Although providing a structural interpretation of such reduced-form evidence is beyond the scope of the present work, we cannot resist offering an intriguing conjecture. As it is well known—see, eg, Goodfriend and King (1997)—a policy designed to stabilise the price level causes a sticky-price DSGE model to mimic the behaviour of its real business-cycle underlying deep structure. Since real wage procyclicality is a key property of real business-cycle models, we tentatively conjecture that real-wage procyclicality post-1992 may find its origin in the fact that the policy of price stability pursued under the current regime may be causing the UK economy to behave like its real business cycle underlying core.

Other regimes and periods do not exhibit any clear-cut cyclical pattern, with the possible exception of Bretton Woods, for which the cross-correlation reported in Chart 10 seems to indicate some evidence of procyclicality (such a pattern, however, appears less apparent based on the simple inspection of the filtered series in Chart 9). The lack of an obvious cyclical pattern is especially clear for the gold standard period. Based on either Feinstein's 'compromise' GDP estimate, or on the alternative Greasley measure, the cross-correlation function oscillates between -0.26 and 0.22, while a simple visual inspection clearly shows how the cyclical component of real wages was strongly positively correlated with the cyclical component of Feinstein's 'compromise' GDP estimate between, roughly, 1855 and 1865, was negatively correlated between 1870 and 1880 and between 1895 and 1905, and did not exhibit any pattern over the remaining years. Finally, for the 1972-92 period, too, both the cross-correlation and a simple visual inspection, points towards the absence of any clear-cut pattern.⁽⁵¹⁾

(51) Previous results in the literature are mixed. For the US, based on the Hodrick-Prescott filter, Kydland and Prescott (1990) show that average hourly real compensation in the US business sector had behaved in a 'reasonably strong pro-cyclical manner' over the period 1954-89, with a peak in the cross-correlation function of 0.42 and a lead of two quarters over GNP. Much weaker procyclicality is reported by Stock and Watson (1999) based on the Baxter-King filter, while Stock and Watson (1999), based again on the Baxter-King filter, do not detect any clear evidence of either pro or countercyclicality.

As for the UK, the only study we are aware of for the post-WWII era is Blackburn and Ravn (1992), which reports evidence of mild procyclicality over the period 1956:1-1990:1, with a peak in the cross-correlation function of 0.24 at lag zero. There are however several differences between Blackburn and Ravn (1992) and the present work, in particular their use of the Hodrick-Prescott filter, of a different nominal wage indicator (nominal wage rate for manufacturing workers), the fact that they do not break their sample period further, and especially the fact that their sample does not include the period of stronger procyclicality.

What are the implications of these findings—in particular, of the marked variation in real wage cyclicalities over the sample period—for macroeconomic theory and modelling? While the negative implications—a clear falsification of (classes of) models, like the standard RBC one, predicting uniformly procyclical real wages—are obvious, the positive implications are not clear-cut. One theory recently suggested by Huang, Liu and Phaneuf (2004) to explain the switch, documented for the United States, from a mild real wage countercyclicalities during the inter-war era to a mild procyclicalities after WWII, is based on a model with nominal wage and price rigidities and input-output structure of the economy that evolves over time, with an increase over time in the extent of goods processing. As they show, for plausible calibrations such a story is capable of replicating the change over time in the cyclical pattern of real wages seen in the data. While Huang *et al*'s theory appears a useful starting point, the previously documented pattern for the United Kingdom over the past several decades—in particular, the weak procyclicalities under Bretton Woods, the near-acyclicalities between 1972 and 1992, and the strong procyclicalities under inflation targeting—points towards a possible role for shocks and especially monetary policy.

4.5 *The amplitude of business-cycle fluctuations*

‘You’ve never had it so good’

—Harold Macmillan

Table E reports the standard deviations of the band-pass filtered business-cycle components for the series in our data set. The approximated band-pass filter we use is, again, the Christiano-Fitzgerald (2003) one. Following established conventions in business-cycle analysis,⁽⁵²⁾ we define the business-cycle frequency band as the one containing all the components of a series with a frequency of oscillation between six quarters and eight years.

Several facts are readily apparent from the table. In particular, first, based on annual data, the volatilities of the business-cycle components of the logarithms of real GDP and of *all* national accounts aggregates considered in this paper have been, post-1992, lower than during any of the previous monetary regimes/historical periods, in several cases markedly so. The volatility of the cyclical component of log real GDP, for example, has been equal to 68.3% and 51.1% of what it

(52) See for example King and Watson (1996), Baxter and King (1999), Stock and Watson (1999), and Christiano and Fitzgerald (2003).

was under Bretton Woods and during the 1972-92 period respectively, while the figure for the inter-war period is a striking 32.0%, thus confirming, once again, the well-known, remarkable instability of the inter-war era when seen from a historical perspective. Interestingly, the volatility associated with the *de jure* gold standard regime, at 1.71 percentage points,⁽⁵³⁾ although twice as large as that associated with the inflation-targeting regime, is very close to that prevailing during the 1972-92 period (1.68 percentage points). It is important to stress, once again, the high quality of UK XIX century real GDP data—as we mentioned in the previous section, the Feinstein (1972) ‘compromise estimate’ we use is based on three independent estimates based on income, expenditure and production data respectively—so that these results should be regarded as reliable. Our results paint a different picture from that found in the related studies mentioned in the introduction,⁽⁵⁴⁾ with a period of extreme turbulence (the inter-war years), one of remarkable stability (the inflation-targeting regime), and three periods ‘in-between’, with the volatility of the gold standard era and that of the 1972-92 period being essentially the same. Based on quarterly post-WWII data, the inflation-targeting regime appears, once again, as the most stable by far for both real GDP and all national accounts aggregates, with the single exception of government expenditure, for which the lowest volatility pertains to the Bretton Woods regime. (There is no need to stress, however, how for no reason we should expect the volatility of public expenditure to bear any systematic relationship with the prevailing monetary regime.)

A near-identical picture emerges for inflation measures.⁽⁵⁵⁾ First, the inflation-targeting regime appears to have been characterised, to date, by the lowest volatility ever for *all* the inflation measures we consider, with the obvious exceptions of the Schumpeter price indices and of the wholesale price index, which do not extend up to the current regime. Second, the fall in volatility under the current regime, compared with the pre-1992 regimes/historical periods, has been most of the times extremely marked. Focusing on annual GDP deflator inflation, for example, the volatility of its business-cycle component post-1992 has been equal to 44.4% and 20.4% of what it was under Bretton Woods and, respectively, during the 1972-92 period, while the corresponding figures for the ONS’ composite CPI are 76.5% and respectively 37.3% (figures based on the

(53) As we stress in note *a* to Table B, based on Greasley’s (1989) GDP estimates volatility for the *de jure* gold standard period increases only marginally to 1.77%.

(54) Backus and Kehoe (1992) report the following standard deviations for the HP-filtered logarithm of real GNP by sub period: pre-war, 2.12%; inter-war, 3.47%; post-war, 1.62%. Bergman, Bordo and Jonung (1998), based on the Baxter-King filter, obtain the following results by subperiod: 1876-1913, 2.0%; 1920-1938, 2.9%; 1948-1972, 1.1%; 1973-1995, 1.7%.

(55) Results for the filtered logarithms of price indices are qualitatively the same as those for inflation measures, and are not reported here, but are available upon request.

inverse of the purchasing power of the pound are very close to those based on the composite CPI). The volatility of inflation fluctuations under the gold standard was 4.3 times that corresponding to the current regime based on the GDP deflator, and 4.2 times based on the composite CPI. Intriguingly, the corresponding figures for the inter-war period are 1.23 and 1.19, thus pointing towards a less-than-dramatic decrease in volatility under the current regime, compared with the inter-war era. Figures for the *de facto* gold standard and the *de facto* silver standard, ranging from 6.47 to 9.28, point towards a remarkable volatility of inflation fluctuations under those regimes. These figures, however, are likely to overstate the authentic extent of volatility reduction over the most recent era for two reasons. First, it can reasonably be assumed that old price data are subject to a sizable measurement error, the older the data the more so. This automatically exaggerates the authentic extent of volatility reduction in the most recent era. Second, the composition both of overall output, and of the average consumption basket in previous historical periods was markedly ‘skewed’—compared with today’s figures—towards agricultural goods, whose prices are markedly more volatile than industrial goods’ prices. Again, this would exaggerate the authentic extent of volatility reduction over the most recent era. Results based on quarterly RPI inflation, available from 1914:4, confirm the previously discussed pattern, with the volatility of the cyclical component of inflation under the current regime having been equal, so far, to 31.3%, 48.7%, and 31.7% of what it was during the inter-war years, under Bretton Woods, and respectively between 1972 and 1992.

Chart 6 shows scatterplots of the standard deviations of the business-cycle components of the logarithm of real GDP and of two alternative inflation measures, based on the composite CPI (annual data), and on the RPI (quarterly data). Although based on an extremely limited number of observations, the correlation clearly appears to be positive based on quarterly data, while based on annual data it appears to be positive if we exclude the inter-war era, which might be regarded as anomalous. Most sticky-price (sticky-wage) DSGE models currently used in monetary policy analysis imply a trade-off between inflation and output volatility,⁽⁵⁶⁾ in the sense that, *ceteris paribus*, a monetary policy aimed at reducing the unconditional volatility of inflation necessarily implies an increase in the unconditional volatility of output. The exception is represented by the early sticky-price models of, eg, Goodfriend and King (1997) and King and Wolman (1999), where, due to the simplicity of the model’s structure, there was no trade-off between inflation and output gap’s stabilisation. The results reported in Chart 6 suggest several possible alternative—and

(56) See, eg, the analysis in Erceg, Henderson and Levin (2000).

non mutually exclusive—interpretations. A first possibility is that the trade-off between inflation and output gap volatility is indeed there, but that, historically, changes in the variance of the structural shocks—including monetary policy shocks—have accounted for a dominant fraction of the changes in the volatilities of inflation and output across monetary regimes. A second possibility is instead that, in line with Goodfriend and King (1997) and King and Wolman (1999), there is no trade-off between inflation and output gap volatility. Although a possibility from a conceptual point of view, such an explanation appears to us as less than appealing simply because the very same frictions giving rise to the trade-off appear to be necessary in order to allow DSGE models to successfully replicate the dynamics found in the data.⁽⁵⁷⁾

Turning to results for other indicators:

(i) Both industrial output and output in the manufacturing sector display an overall pattern broadly resembling the one we previously discussed for real GDP and national accounts components, with the volatility associated with the inflation-targeting regime having been, by far, the lowest in recorded history, and with marked volatility reductions compared with previous regimes/periods. Transport and communications output, on the other hand, appears to have been the most cyclically stable under Bretton Woods, while results for distribution and other services do not exhibit any clear-cut pattern, with quarterly data suggesting the lowest volatility post-1992, and annual data, quite surprisingly, indicating the inter-war era as the most stable ever.

(ii) Concerning monetary aggregates, first, quarterly post-WWII M4 data point towards significant volatility reductions post-1992 compared with the previous two regimes/periods, by 40.4% and respectively 22.3%. As for base money, the volatility post-1992 ranges between 22.8% and 58.3% of what it was under previous regimes/periods.

(iii) Results for interest rates, first, consistently suggest the 1972-92 period to have been characterised by the largest volatility in recorded history. Second, post-WWII quarterly data on either short or long rates clearly suggest, again, the current regime to have been characterised by the lowest volatility of the post-WWII era. Third, both the annual long rate series, and the quarterly series for the three-month bank bills rate, clearly indicate the lowest volatility to have

(57) On this see, eg, Smets and Wouters (2003a), Smets and Wouters (2003b), and Christiano, Eichenbaum and Evans (2005).

been associated with the *de jure* gold standard.⁽⁵⁸⁾

(iv) Not surprisingly, results for the rate of growth of nominal earnings closely mimic those for inflation measures, with the volatility under inflation targeting being 26.4% and 17.6% of what it was under Bretton Woods, and respectively between 1972 and 1992. The figure for the inter-war period, being based on the Capie and Collins (1983) series for average weekly wages, is strictly speaking not fully comparable with the post-WWII data, but taken at face value suggests volatility under inflation targeting to have been less than half that for the inter-war years. Results for the rate of unemployment consistently suggest the greatest extent of stability to have been associated with the Bretton Woods years, although, based on quarterly data, the difference with the current regime is comparatively small.

5 Conclusions

This paper has exploited the dramatic variation in monetary regimes intervened in the United Kingdom since the metallic standard era to investigate continuity and changes across monetary regimes in key macroeconomic stylised facts in the United Kingdom. Only one stylised fact—the high correlation between inflation and the rates of growth of both narrow and broad monetary aggregates at the very low frequencies—has emerged as remarkably invariant to changes in the policy regime and, as such, should be regarded as structural in the sense of Lucas (1976), and should be replicated by any reasonable macroeconomic model. All the other facts we have investigated, on the other hand, exhibited a sometimes marked variation across monetary regimes. In particular:

(i) High inflation persistence, regarded for some time as a robust, established fact, clearly appears to have been, historically, the exception, rather than the rule, with inflation estimated to have been very highly persistent only during the period between the floating of the pound, in June 1972, and the introduction of inflation targeting, in October 1992. Interestingly, under inflation targeting inflation is estimated to have been, so far, slightly negatively serially correlated based on all the price indices we consider. While these findings refute the notion that inflation is *intrinsically* persistent, they are compatible with the alternative position that the extent of inflation persistence

(58) It is important to stress how, unlike most other series, interest rates do not suffer from either measurement error problems, or changes in the nature/composition of the object which is being measured (a one-year interest rate today is essentially the same as a one-year interest rate 200 years ago), so that these comparisons are probably the most reliable in the entire paper.

crucially depends on the strength and credibility of the nominal anchor of the system.

(ii) In contrast to the high stability exhibited at the very low frequencies, the correlation between inflation and the rates of growth of monetary aggregates has exhibited a sometimes marked variation at higher frequencies. This is particularly evident in the case of M4 at the business-cycle frequencies, whose contemporaneous correlation with inflation has turned from negative to positive over the second half of the 1980s.

(iii) The Phillips correlation between unemployment and inflation at the business-cycle frequencies appears to have been flattest under the gold standard, steepest between 1972 and 1992. In line with Ball, Mankiw and Romer (1988), evidence points towards the existence of a positive correlation—both across monetary regimes and over time (especially over the post-WWII era)—between mean inflation and the slope of the Phillips correlation, which is compatible with New Keynesian theories emphasising the link between mean inflation and the frequency of price adjustments.

(iv) The real wage was markedly countercyclical during the inter-war period, while it has been, so far, procyclical under inflation targeting. As for other regimes and periods it displayed some evidence of procyclicality under Bretton Woods, but no consistent pattern either between 1972 and 1992 or under the gold standard, turning for example from procyclical during the years between 1855 and 1865, to countercyclical over the following decade. While these findings clearly falsify models and theories, like the standard RBC one, predicting uniformly procyclical real wages, they do not naturally point towards clear-cut alternatives. In particular, the weak procyclicality under Bretton Woods, the essential acyclicity between 1972 and 1992, and the strong procyclicality under inflation targeting suggest a possible role for shocks, and especially for monetary policy.

Appendix: The data set

Annual series

The Elisabeth Schumpeter price indices for consumer and producer goods, available for the periods 1661-1823 and 1661-1801 respectively, are from Table 4 of Schumpeter (1938). The composite consumer price index and the series for the purchasing power of the pound, both available for the period 1750-2003, are from the Office for National Statistics (henceforth, ONS)—see O’Donoghue, Goulding and Allen (2004)—while a series for the wholesale price index for the period 1851-1988, is from Table H1 of Mitchell (1992).

Real national accounts components and their deflators are from the ONS starting from 1948. Before that, we consider two different sets of estimates. The first set is based on National Accounts’ Tables 5 and 6 of Mitchell (1988), containing estimates for GNP, consumption, government expenditure and investment since 1830 at current and constant prices respectively; and on Tables 3 and 5 of Feinstein (1972), containing estimates for exports and imports of goods and services since 1870, again at current and constant prices respectively. National accounts components’ deflators are computed as the ratio between the respective series at current and constant prices. For real national accounts components we then consider a second set of estimates, based on Table 7 of Feinstein (1972), containing index numbers for consumption, government expenditure, investment, and exports and imports of goods and services since 1870 at constant market prices; and on Table 6 of Feinstein (1972), containing a ‘compromise’ real GDP estimate starting in 1855 based on three alternative, independent estimates of real output, based on income, expenditure and production data respectively. As stressed by Backus and Kehoe (1992, page 868), ‘[s]ince the three estimates draw on different sources, their measurement errors should be imperfectly correlated, and the compromise estimate should be more accurate than any of the individual series’.⁽⁵⁹⁾ Following Backus and Kehoe (1992), in what follows we take the second set of estimates as our benchmark for real quantities, although we will report and discuss results based on the first set of estimates every time there are significant discrepancies. For real output,

(59) Largely because of the well-known problems plaguing US historical data discussed by Romer (1986) and Romer (1989), Backus and Kehoe (1992) stress the (most likely) greater reliability of European series. On this, see also Sheffrin (1988).

we also consider a third estimate, the ‘compromise estimate’ of GDP from Table 2 of Greasley (1989). As we briefly mention, for example, in Table 2 (note *a*), results based on this series are however nearly identical to those based on Feinstein’s ‘compromise estimate’.

Sectoral outputs for transports and communications, and for distributions and other services, are from National Accounts’ Table 8 of Mitchell (1988) until 1948, and from the ONS after that. Output in industry is from Crafts and Mills (1994) from 1700 to 1913, from National Accounts’ Table 8 of Mitchell (1988) for the period 1921-48, and from the ONS after 1948. Output in manufacturing is from Table 51 of Feinstein (1972) from 1855 to 1948, and from the ONS after that. (With the exception of output in manufacturing, the years 1914-20 and 1939-45 are missing for all sectoral output indicators.)

Civilian and overall employment, and the rate of unemployment, are from Table 57 of Feinstein (1972), and are all available for the period 1855-1965. A real wages’ series for the period 1750-1913 is from Crafts and Mills (1994). A series for nominal wages is from Table 1 of Greasley (1989).

A series for the three-month bills rate, available for the period 1871-1975, is from Table 4.9 of Friedman and Schwartz (1982). Two series for Gurney’s rate for first-class three-months bills and for the three months’ bank bills rate, available for the the periods 1824-56 and 1845-1938 respectively, are from Financial Institutions’ Table 15 of Mitchell (1988).⁽⁶⁰⁾ A series for the yield on consols, available for the period 1756-1980, is from Financial Institutions’ Table 13 of Mitchell (1988). A series for an approximate yield on 3% funds, available for the period 1743–1801 is from Table 9 of Ashton (1959). An M3 series available for the period 1871-1969 is from Table I.1(3) of Capie and Webber (1985).

Quarterly series

National accounts aggregates and their respective deflators are from the ONS. For all series the sample period is 1955:1-2004:1. Sectoral output indicators are from the ONS. The sample period is 1948:1-2004:1 for all indicators except all industries’ output, which starts in 1955:1. An employment series from the ONS is available for the period 1978:2-2004:1. The two series for the

(60) Between 1911 and 1938, the series for the three months’ bank bills rate is computed as the average of the maximum and minimum reported in Mitchell (1988).

monetary base are from Capie and Webber (1985) and from the Bank of England database, respectively. The sample periods are 1870:1-1982:4 and 1969:3-2004:1 respectively. A series for M4 from the Bank of England database is available for the period 1963:2-2004:1. The long rate ('Long-dated (20 years) par yield, per cent per annum'), average earnings in the whole economy, and a series for the compensation of employees are from the ONS. The sample periods are 1963:1-2004:1, 1963:1-2004:1, and, respectively, 1955:1-2004:1.

Monthly series

A series for the three-month bank bill rate (rate on prime bills, end-of-month figures), available for the period January 1870:1-December 1982, is from Table III.(10), column V of Capie and Webber (1985). An index of wholesale prices of domestic and imported commodities available for the period January 1790-December 1850 is from Table 39 of Gayer, Rostow and Schwartz (1953). A series for the rate of unemployment based on the claimant count, available for the period July 1948-June 2004, is from the ONS. A seasonally unadjusted series for the rate of unemployment among insured workers, available for the period January 1920-December 1939, is from Table 4.4 of Capie and Collins (1983). A seasonally unadjusted series for the Board of Trade wholesale price index, available for the period January 1919-December 1939, is from Table 2.1 of Capie and Collins (1983). A seasonally unadjusted series for the retail price index available for the period July 1914-December 1982 is from Table III.(11) of Capie and Webber (1985). *The Economist's* seasonally adjusted index of business activity, available for the period January 1920-December 1938 is from Table 3.1 of Capie and Collins (1983). Two series for the market rate of interest on best three-month and six-month bills (quoted at an annual rate), both available for the period January 1919-December 1939, are from Tables 7.1 and 7.3 of Capie and Collins (1983). Three series for the interbank three, six, and twelve-month interest rates,⁽⁶¹⁾ available for the period January 1979-June 2004, are from the Bank of England database. A seasonally unadjusted series for the retail price index from the ONS (series code is CDKO) is available for the period June 1947-June 2004. A series for real average weekly wages for the period January 1925-December 1939 has been constructed by deflating the series for nominal average weekly wages from Table 4.2 of Capie and Collins (1983) by the Capie and Webber (1985) retail price index. A monthly, seasonally unadjusted series for the CPI, available for the period January 1975-August 2004, is from the ONS. Finally, a series for the wholesale price index from the NBER historical database

(61) All figures are end-of-month, and have been computed as the simple averages between the LIBID and LIBOR rates.

(series code: 04053) is available from January 1885 to May 1951. When needed, unemployment rate series, and *The Economist's* business activity index for the inter-war era, have been converted to the quarterly frequency by taking averages within the quarter. All other series have been converted by keeping the last observation from each quarter.

Tables and charts

Table A Average inflation, money growth, and interest rates by monetary regime/historical period									
	<i>De facto</i> silver standard	<i>De facto</i> gold standard	<i>De jure</i> gold standard	Inter-war period	Bretton Woods	Bretton Woods to inflation targeting	Inflation targeting		
	A	A Q	A Q	A Q	A Q	A Q	A Q	A	Q
	<i>Inflation rates based on:</i>								
E. Schumpeter price indices for:									
<i>consumer goods</i>	-0.27*	0.69 -	- -	- -	- -	- -	- -	- -	- -
<i>producer goods</i>	-0.13*	0.66 -	- -	- -	- -	- -	- -	- -	- -
GDP deflator	-	- -	0.04 -	-0.83* -	4.53 4.42	9.83 9.87	2.58 2.54*		
ONS's composite CPI	-	1.63	-0.05 -	-1.03* -	4.47 -	9.72 -	2.48 -		
Inverse of purchasing power of the pound	-	1.31 -	-0.33 -	-1.07* -	4.22 -	8.63 -	2.40 -		
Wholesale price index	-		0.23 0.77	-1.41* -1.17*	4.00 -	- -	-		
Retail price index ^a	-	- -	- -	- -0.94*	- 4.39	- 9.79	- 2.56		
^a Inter-war period from Capie and Webber (1985), after that from ONS.									

**Table A (cont.) Average inflation, money growth, and interest rates by monetary regime/
historical period**

	<i>De facto</i> silver standard		<i>De facto</i> gold standard		<i>De jure</i> gold standard		Inter-war period		Bretton Woods		Bretton Woods to inflation targeting		Inflation targeting		
	A	A	Q	A	Q	A	Q	A	Q	A	Q	A	Q	A	Q
	<i>Rates of growth of monetary aggregates:</i>														
M0 ^b	—	—	—	1.05	1.77	0.91*	1.09*	3.67	3.74	—	7.60	—	6.82		
Money stock ^b	—	—	—	2.04	—	1.21*	—	3.74	—	—	—	—	—		
M3 (<i>Capie-Webber</i>)	—	—	—	1.78	—	1.26*	0.79*	3.17	3.06	—	—	—	—		
M4 (<i>Bank of England</i>)	—	—	—	—	—	—	—	—	10.50	—	13.86	—	7.48*		
	<i>Interest rates:</i>														
Long rates ^c	3.65 ^d	3.95	—	3.16*	—	3.96	—	5.44	7.38	—	11.67	—	6.19*		
3-month bank bills	—			2.91	2.79	2.53	2.47*	4.21	4.24	—	11.50	—	—		
ONS interbank rate	—			—	—	—	—	—	7.55	—	11.61	—	5.65*		

^b Annual data from Friedman and Schwartz (1982); quarterly data: *de jure* gold standard to Bretton Woods, from Capie and Webber (1985), after that from Bank of England. ^c Annual: yield on consols; quarterly: ONS's 20-year par yield.

^d Approximate yield on 3% funds from Ashton (1959).

* indicates the lowest entry in each row. A = annual; Q = quarterly.

Table B Inflation persistence: Hansen (1999) ‘grid-bootstrap’ median-unbiased estimates of ρ , and 90% confidence intervals

	<i>De facto</i> silver standard	<i>De facto</i> gold standard	<i>De jure</i> gold standard	Inter-war period	Bretton Woods	Bretton Woods to inflation targeting	Inflation targeting
<i>Annual series:</i>							
E. Schumpeter price indices for:							
<i>consumer goods</i>	-0.31 [-0.71; 0.11]	-0.24 [-0.61; 0.14]	–	–	–	–	–
<i>producer goods</i>	0.19 [-0.04; 0.41]	-0.22 [-0.41; -0.03]	–	–	–	–	–
GDP deflator	–	–	0.05 [-0.13; 0.22]	–	0.51 [0.15; 0.93]	0.79 [0.44; 1.04]	–
ONS’s composite CPI	–	-0.17 [-0.62; 0.29]	-0.21 [-0.45; 0.02]	–	0.56 [0.19; 1.02]	0.91 [0.53; 1.04]	–
Inverse of purchasing power of the pound	–	–	–	–	0.56 [0.16; 1.01]	0.96 [0.54; 1.05]	–
Wholesale price index	–	–	0.17 [-0.05; 0.39]	–	0.21 [-0.15; 0.53]		–
<i>Quarterly series:</i>							
Wholesale price index from NBER database	–	–	0.14 [-0.02; 0.30]	0.24 [0.05; 0.46]	–	–	–
Retail price index ^a	–	–	–	0.37 [-0.05; 0.80]	0.56 [0.33; 0.83]	0.91 [0.72; 1.03]	-0.05 [-0.57; 0.49]
Consumer price index	–	–	–	–	–	0.93 [0.89; 0.98]	-0.12 [-0.51; 0.24]
GDP deflator	–	–	–	–	0.44 [0.07; 0.83]	0.88 [0.70; 1.04]	-0.19 [-0.70; 0.35]
^a For the inter-war period, retail price index from Capie and Webber (1985). After that, from ONS. Lag order chosen based on SIC. For technical details, see Section 4.2.							

Table C The Fisher effect: estimated Fama regressions by monetary regime/historical period			
<i>De facto gold standard (1885:1-1914:7)</i>			
Maturity:	3-month		
$\hat{\alpha}$	-2.12 (2.68)		
$\hat{\beta}$	0.77 (0.73)		
<i>Inter-war period (1922:1-1939:7)</i>			
Maturity:	3-month	6-month	
$\hat{\alpha}$	-6.67 (1.63)	-6.81 (1.85)	
$\hat{\beta}$	-0.44 (0.37)	-0.65 (0.37)	
<i>Bretton Woods (1947:6-1972:5)</i>			
Maturity:	3-month		
$\hat{\alpha}$	1.87 (1.58)		
$\hat{\beta}$	0.03 (0.32)		
<i>Bretton Woods to inflation targeting (1979:1-1992:9)</i>			
Maturity:	3-month	6-month	12-month
$\hat{\alpha}$	-8.49 (2.66)	-4.44 (2.24)	-2.42 (1.56)
$\hat{\beta}$	1.23 (0.27)	1.09 (0.24)	0.80 (0.17)
<i>Inflation targeting (1992:10-2004:6)</i>			
Maturity:	3-month	6-month	12-month
$\hat{\alpha}$	0.76 (1.22)	1.20 (0.85)	2.50 (0.21)
$\hat{\beta}$	0.06 (0.18)	0.06 (0.12)	0.01 (0.05)
<p>Standard errors (in parentheses) are based on the Andrews (1991) HAC covariance matrix estimator. <i>Inflation</i> Gold standard: based on the wholesale price index from the NBER database. Inter-war period: based on the RPI from Capie and Webber (1985). After that, based on the RPI from the ONS. <i>Interest rates</i> Gold standard and Bretton Woods, from Capie and Webber (1985). Inter-war period, from Capie and Collins (1983). After Bretton Woods, from the Bank of England database.</p>			

Table D The correlation between money growth and inflation						
	Raw series, correlations between π_t and Δm_t lagged:		Contemporaneous correlations			
			between raw series	between components:		
	2 years	1 year		beyond 30 years	8 and 30 years	1.5 and 8 years
	<i>M0 growth and composite CPI inflation (annual)</i>					
Gold standard	0.07	0.51	-0.04	0.94	0.76	-0.46
Inter-war period	0.06	0.35	0.64	0.75	0.69	0.00
Bretton Woods	-0.11	0.05	-0.03	0.92	-0.12	-0.05
1972-92	0.69	0.80	0.69	0.99	0.90	-0.15
	<i>M0 growth and RPI inflation (quarterly)</i>					
1972-92	0.43	0.37	0.38	0.99	0.90	-0.13
Inflation targeting	-0.27	0.01	-0.16	-0.73	0.64	-0.43
	<i>M3 growth and composite CPI inflation (annual)</i>					
Gold standard	0.00	0.40	0.34	0.97	0.81	0.16
Inter-war period	0.12	0.34	0.64	0.61	0.81	0.10
Bretton Woods	-0.10	0.15	-0.14	0.99	0.23	-0.13
	<i>M4 growth and RPI inflation (quarterly)</i>					
Bretton Woods	-0.14	0.02	0.17	1.00	0.23	-0.30
1972-92	0.20	0.06	0.00	0.97	-0.05	-0.24
Inflation targeting	-0.12	-0.09	0.21	0.93	0.72	0.64
Both the annual composite CPI and the quarterly CPI are from the ONS. The annual M0 series is from Capie and Webber (1985) and Bank of England. The annual series for the money stock is from Friedman and Schwartz (1982). The annual M3 series is from Capie and Webber (1985). The quarterly M4 series is from the Bank of England.						

Table E The Phillips correlation: standard deviations of LAD regression residuals by regime/period				
Gold standard (1855-1913)	Inter-war period (Jan 1922-Aug 1939)	Bretton Woods (Jul 1948-May 1972)	Jun 1972-Sep 1992	Inflation targeting (Oct 1992-Jun 2004)
2.602	3.270	2.410	3.699	0.935
(From LAD regression of cyclical inflation on cyclical unemployment and a constant.)				

Table F Standard deviations of business-cycle components by monetary regime/historical period									
	<i>De facto</i> silver standard	<i>De facto</i> gold standard	<i>De jure</i> gold standard	Inter-war period	Bretton Woods	Bretton Woods to inflation targeting	Inflation targeting		
	A	A Q	A Q	A Q	A Q	A Q	A Q	A Q	A Q
	<i>Logarithms of real national accounts components:</i>								
GDP	–	– –	1.71 ^a –	2.69 –	1.28 1.20	1.68 1.54	0.86* 0.73*		
Consumption	–	– –	1.32 –	1.03 –	1.31 1.26	1.90 1.80	0.95* 0.72*		
Government expenditure	–	– –	4.81 –	3.06 –	2.51 ^b 1.49	1.25 0.86*	0.73* 0.90		
Investment	–	– –	6.22 –	5.78 –	3.19 2.68	3.95 3.72	2.19* 1.82*		
Exports	–	– –	3.37 –	7.36 –	4.51 2.18	2.86 2.36	2.13* 2.02*		
Imports	–	– –	3.06 –	3.78 –	3.85 2.80	4.03 4.17	1.18* 0.93*		
^a Based on the Greasley (1989) real GDP estimate, the standard deviation for the gold standard is 1.77. ^b Starts in 1948, due to the presence of two obvious outliers in 1946-47. * Indicates the lowest entry in each row. A = annual; Q = quarterly.									

Table F (cont.) Standard deviations of business-cycle components by monetary regime/historical period

	<i>De facto</i> silver standard	<i>De facto</i> gold standard	<i>De jure</i> gold standard	Inter-war period	Bretton Woods	Bretton Woods to inflation targeting	Inflation targeting
	A	A Q	A Q	A Q	A Q	A Q	A Q
	<i>Inflation rates based on:</i>						
E. Schumpeter price indices for:							
<i>consumer goods</i>	9.28	7.41 –	– –	– –	– –	– –	– –
<i>producer goods</i>	7.17	7.20 –	– –	– –	– –	– –	– –
GDP deflator	–	– –	3.81 –	1.26 –	1.98 1.68	4.30 4.22	0.88* 1.13*
ONS's composite CPI	–	6.74 –	6.14 –	1.73 –	1.89 –	3.88 –	1.45* –
Inverse of purchasing power of the pound	–	6.47 –	5.97 –	1.51 –	1.72 –	2.98 –	1.19* –
Wholesale price index	–	– –	5.71* 6.09*	6.86 10.25	11.90 –	12.81 –	– –
Retail price index ^c	–	– –	– –	– 4.15	– 2.66	– 4.10	– 1.30*

^c For the inter-war period, retail price index from Capie and Webber (1985). After that, from ONS.

* Indicates the lowest entry in each row. A = annual; Q = quarterly.

Table F (cont.) Standard deviations of business-cycle components by monetary regime/historical period									
	<i>De facto</i> silver standard	<i>De facto</i> gold standard	<i>De jure</i> gold standard	Inter-war period	Bretton Woods	Bretton Woods to inflation targeting	Inflation targeting		
	A	A	A Q	A Q	A Q	A Q	A Q	A Q	A Q
	<i>Logarithms of sectoral output indicators in the non-agriculture sector:</i>								
All industries	8.45	3.04	3.99 –	4.73 –	1.43 1.20	1.62 1.46	0.89* 0.72*		
Manufacturing	–	–	3.92 –	3.79 –	2.96 2.83	3.21 3.11	1.58* 1.48*		
Transport, communications	–	–	2.34 –	3.37 –	1.37* 1.28*	2.09 2.05	1.71 1.50		
Distribution, other services	–	–	1.00 –	0.79* –	1.85 1.72	2.79 2.66	1.30 1.03*		
	<i>Rates of growth of monetary aggregates:</i>								
M0 ^a	–	–	2.55 6.02	2.28* 4.29	3.07 2.77	– 2.36	– 1.38*		
M3 (<i>Capie-Webber</i>)	–	–	1.88* –	3.78 4.57	2.23 2.28*	– –	– –		
M4 (<i>Bank of England</i>)	–	–	– –	– –	– 3.56	– 2.73	– 2.12*		
^a Annual data from Friedman and Schwartz (1982); quarterly data: <i>de jure</i> gold standard to Bretton Woods, Capie and Webber (1985), after that from Bank of England.									

Table F (cont.) Standard deviations of business-cycle components by monetary regime/historical period

	<i>De facto</i> silver standard	<i>De facto</i> gold standard	<i>De jure</i> gold standard	Inter-war period	Bretton Woods	Bretton Woods to inflation targeting	Inflation targeting
	A	A	A Q	A Q	A Q	A Q	A Q
Long rates ^b	0.22 ^c	0.28	0.12* –	0.14 –	0.37 0.70	1.33 1.08	– 0.68*
Three-month bank bills	–	–	0.59* 0.62*	0.84 0.74	0.79 1.00	2.48 2.43	– –
ONS's interbank rate	–	–	– –	– –	– 1.98	– 2.04	– 0.92*
	<i>Additional indicators:</i>						
Nominal earnings (rate of growth) ^d	–	–	– –	– 1.64	– 2.95	– 4.44	– 0.78*
Unemployment rate ^e	–	–	1.75 –	1.31 1.78	0.25* 0.41*	– 0.72	– 0.46
Logarithm of employment	–	–	1.59 –	0.81 –	0.54* –	– 1.07	– 0.42*

^b Annual: yield on consols; quarterly: ONS's 20-year par yield. ^c Approximate yield on 3% funds from Ashton (1959).

^d Inter-war period: average weekly wages' index from Capie and Collins (1983). After that, average earnings in the whole economy from the ONS. ^e Quarterly data: for the inter-war period, unemployment rate among insured workers from Capie and Collins (1983). After that, unemployment rate based on claimant count from the ONS.

Chart 1: Logarithm of the UK annual price level, 1661-2003, and UK annual inflation, 1662-2003

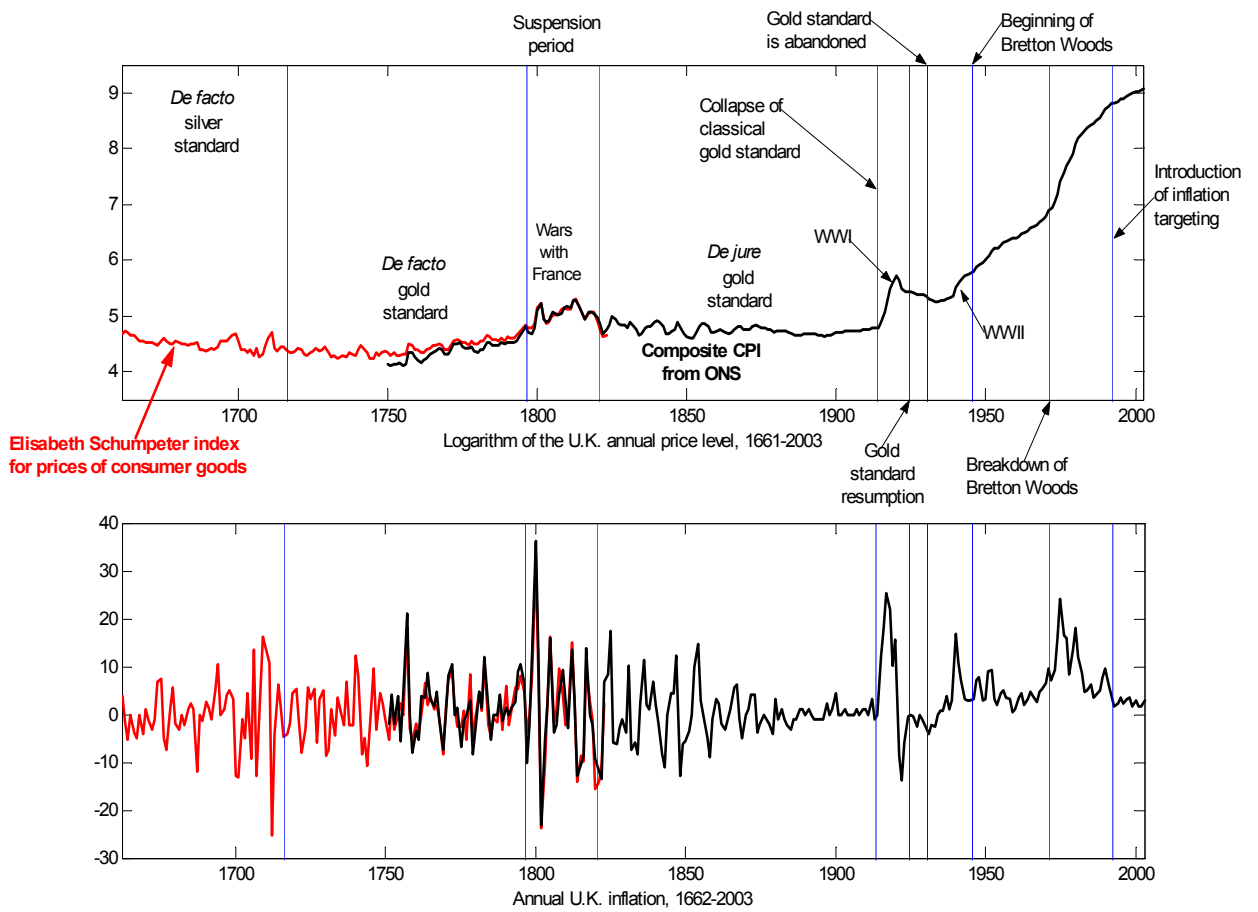


Chart 2: Inflation and base money growth, annual data, 1870-2003 (inflation is based on the ONS's composite price index; base money is from Capie and Webber (1985) until 1970, and from the Bank of England after that)

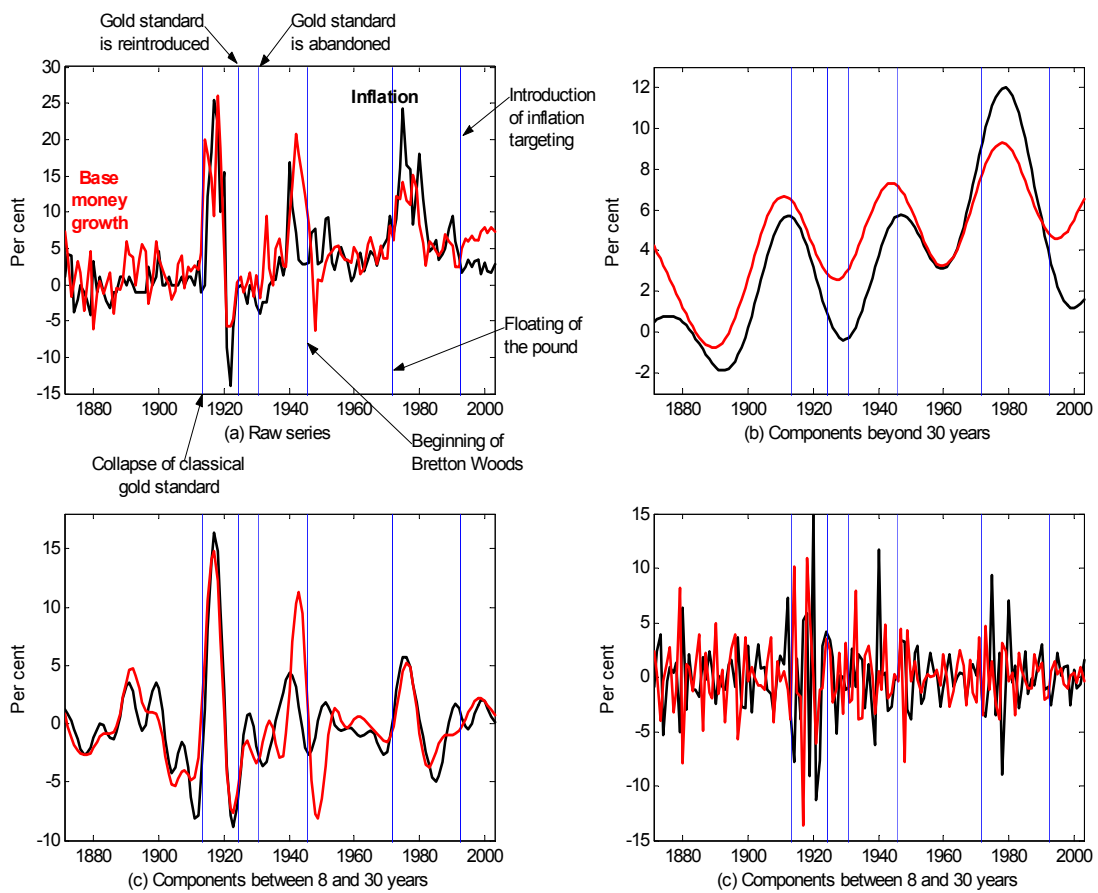


Chart 3: Inflation and M0 growth, quarterly data, 1969:3-2004:1 (inflation is based on the retail price index; M0 is from the Bank of England database)

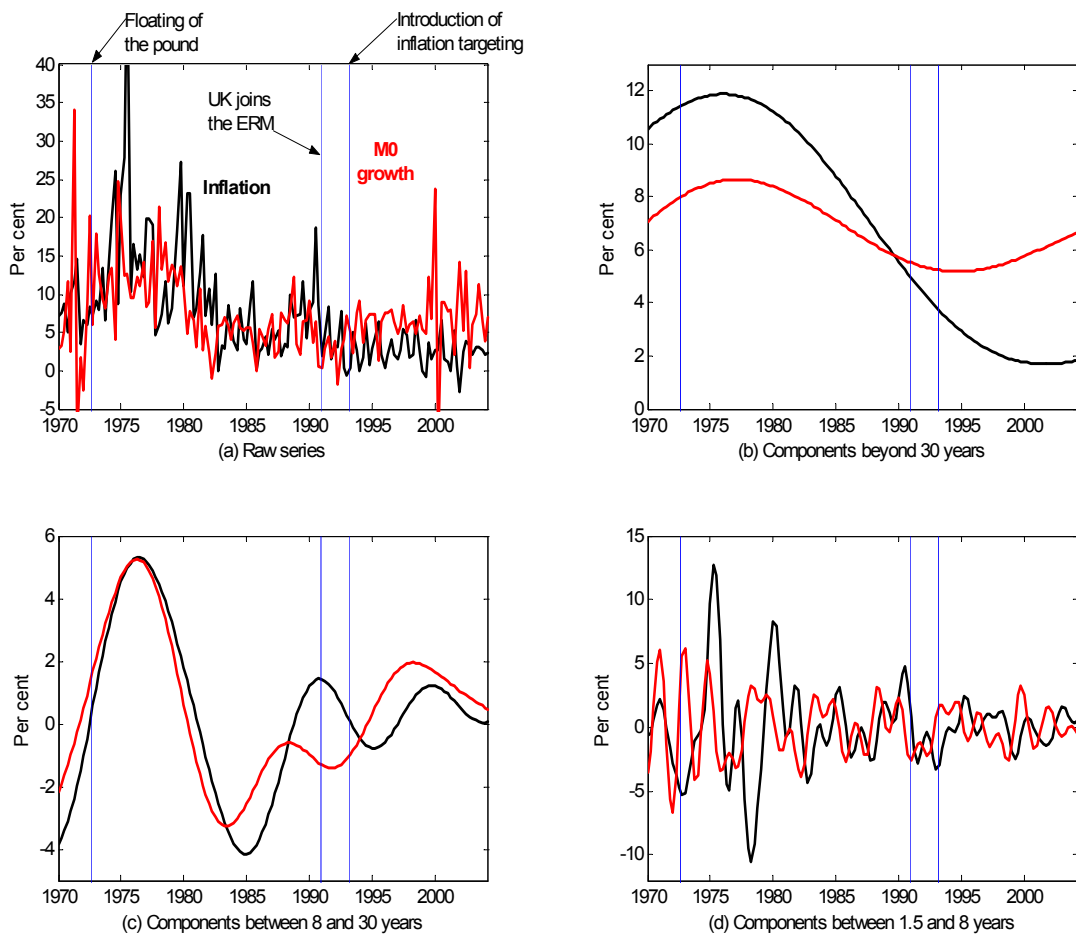


Chart 4: Inflation and M3 growth, annual data, 1871-1969 (inflation is based on the ONS's composite price index; M3 is from Capie and Webber, 1985)

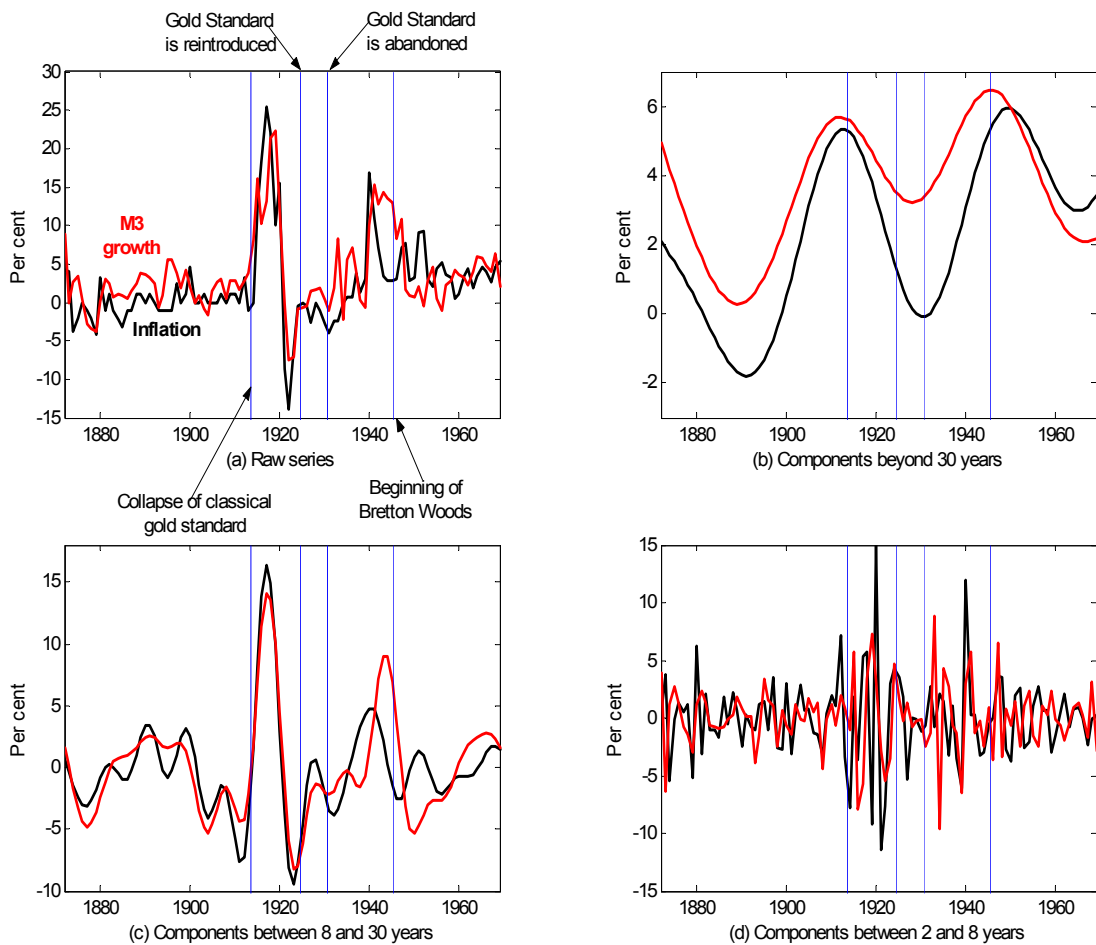


Chart 5: Inflation and M4 growth, quarterly data, 1963:3-2004:1 (inflation is based on the retail price index; M4 is from the Bank of England database)

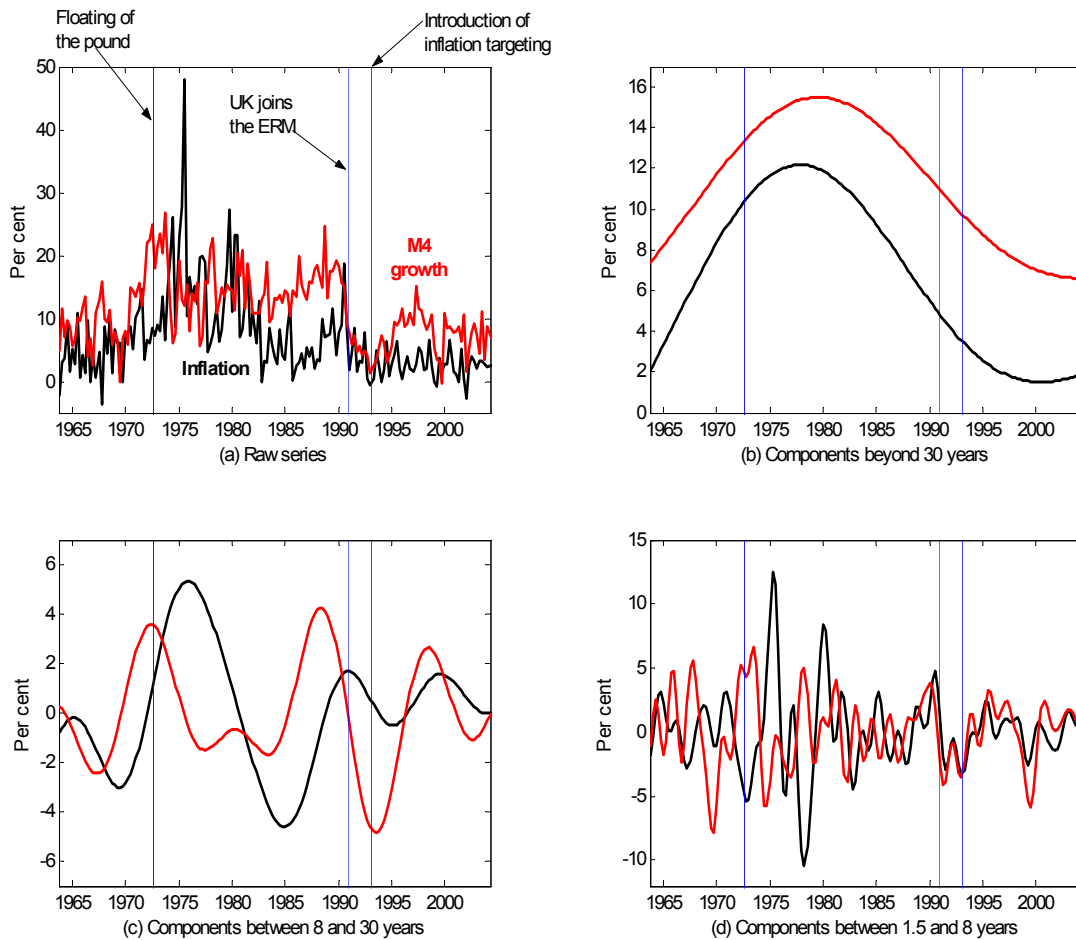


Chart 6: The UK Phillips correlation across monetary regimes, 1855-2004

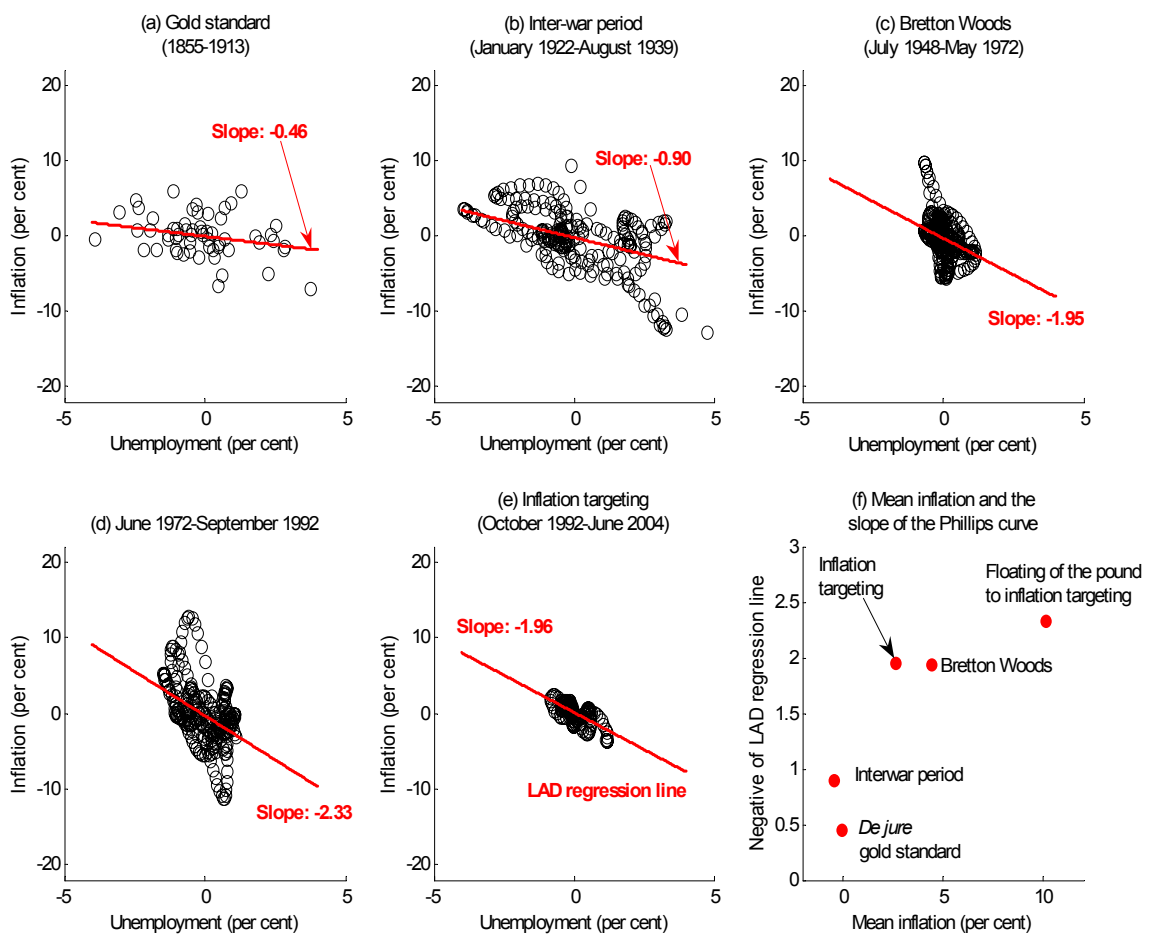


Chart 7: The UK Phillips correlation in the XX century, rolling ten-year samples

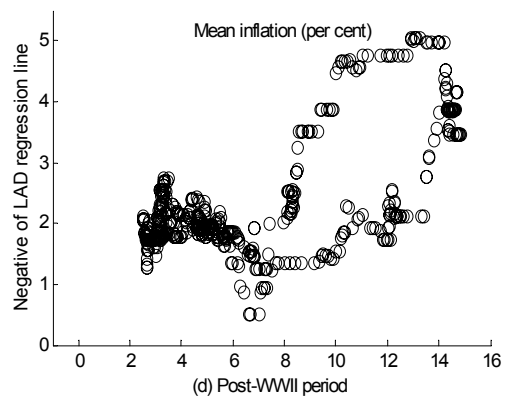
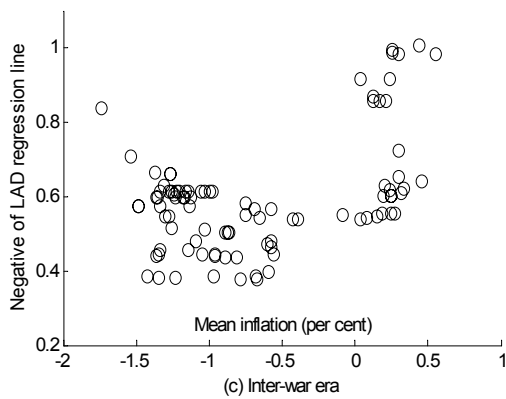
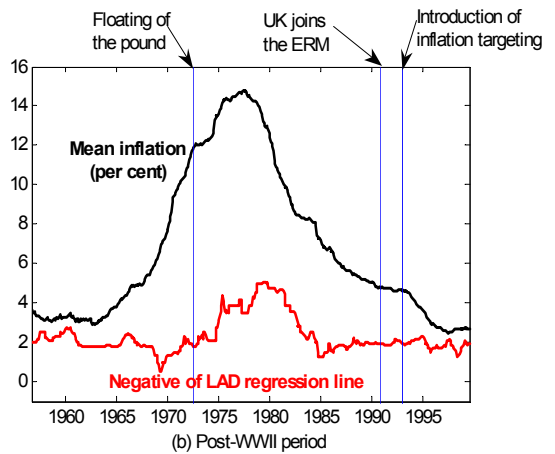
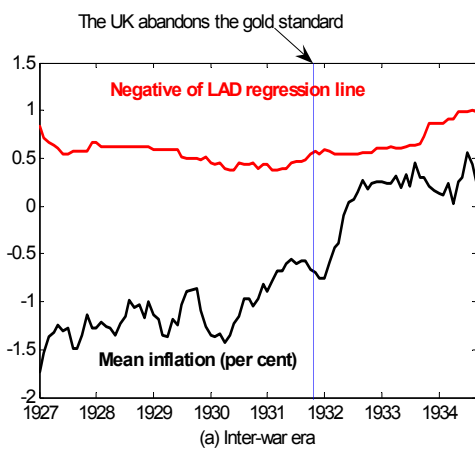


Chart 8: The cyclicity of real wages: band-pass filtered cyclical components by monetary regime/historical period (percentage points)

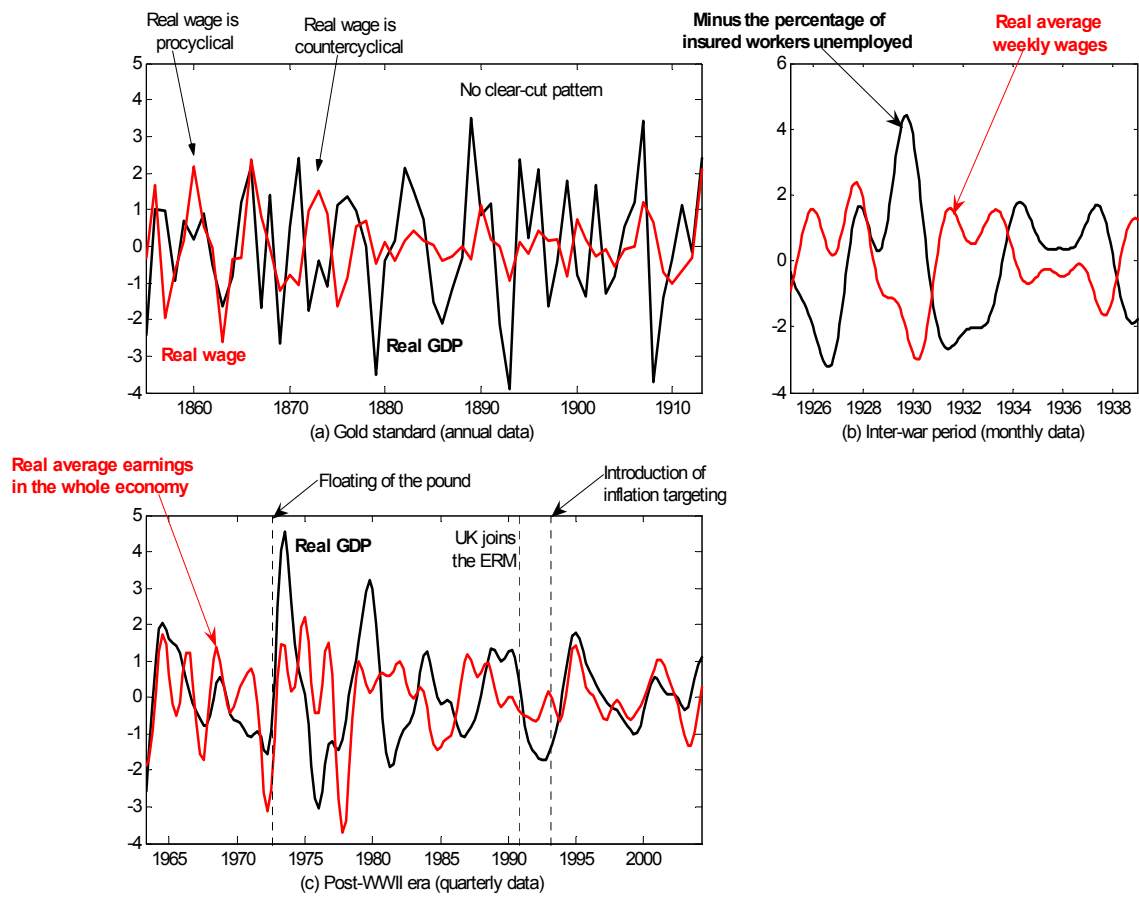


Chart 9: The cyclicality of real wages: cross-correlations between band-pass filtered cyclical components by monetary regime/historical period

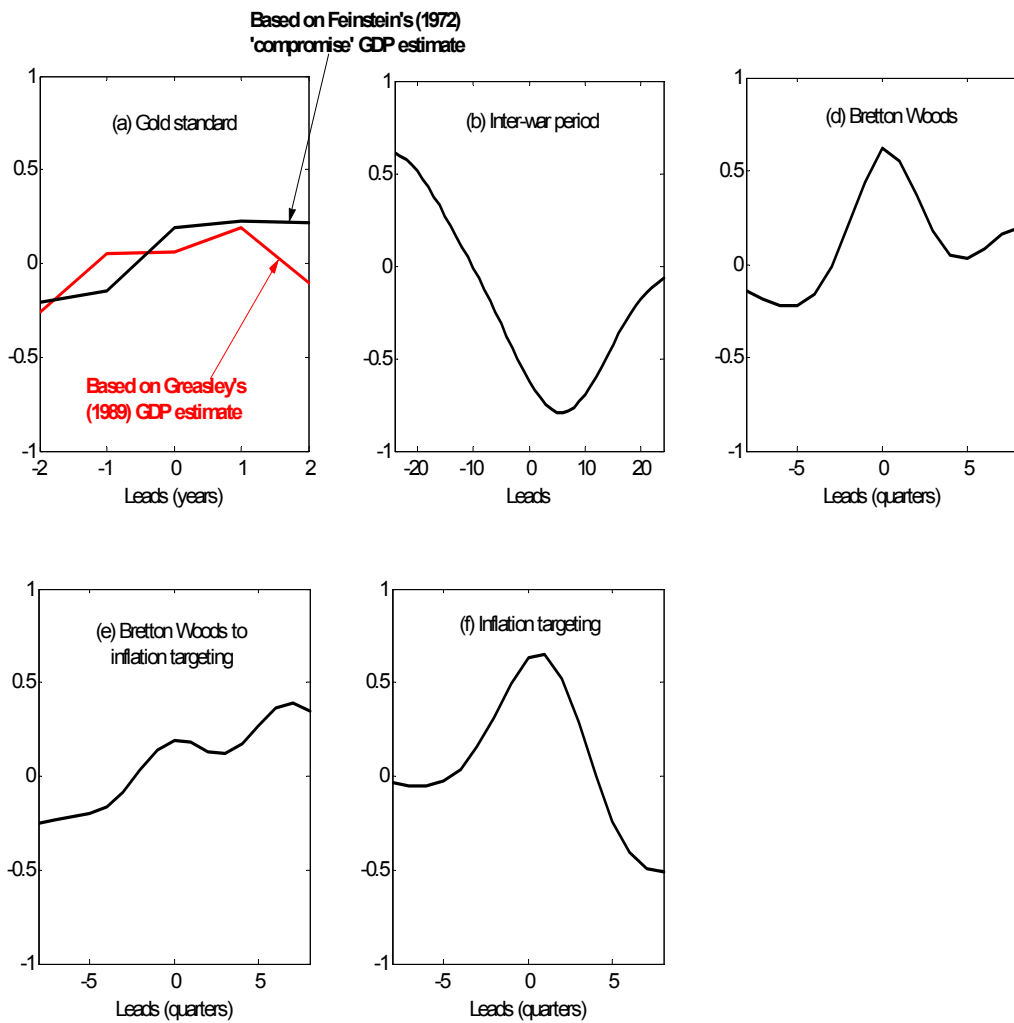
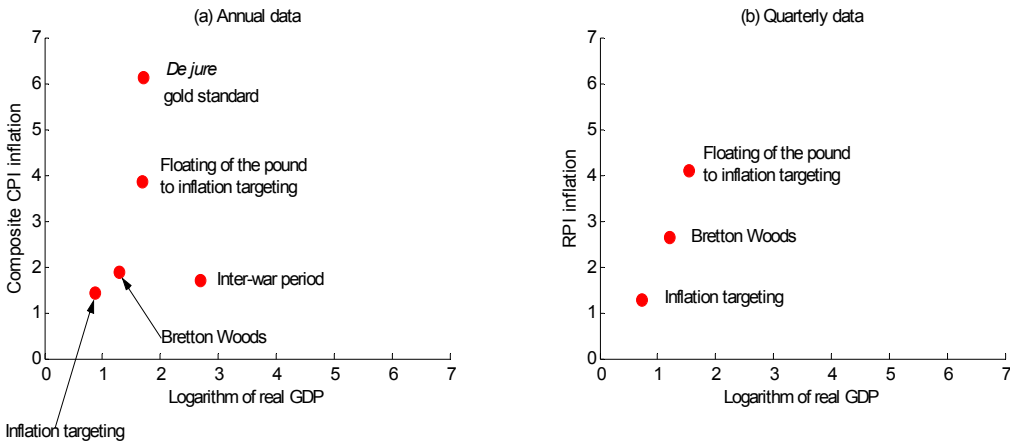


Chart 10: Standard deviations of business-cycle components of log real GDP and inflation by monetary regime (in percentage points)



References

Alogoskoufis, G and Smith, R (1991), 'The Phillips curve, the persistence of inflation, and the Lucas critique: evidence from exchange rate regimes', *American Economic Review*, Vol. 81, No. 5, pages 1,254-75.

Andrews, D K (1991), 'Heteroskedasticity and autocorrelation-consistent covariance matrix estimation', *Econometrica*, Vol. 59, No. 3, pages 817-58.

Andrews, D K and Chen, W (1994), 'Approximately median-unbiased estimation of autoregressive models', *Journal of Business and Economic Statistics*, Vol. 12, No. 2, pages 187-204.

Ashton, T (1959), *Economic fluctuations in England*, Clarendon Press, Oxford.

Backus, D K and Kehoe, P J (1992), 'International evidence on the historical properties of business cycles', *American Economic Review*, Vol. 82, No. 4, pages 864-88.

Ball, L, Mankiw, N G and Romer, D (1988), 'The new Keynesian economics and the output-inflation trade-off', *Brookings Papers on Economic Activity*, Vol. 1, pages 1-65.

Barro, R J (1979), 'Money and the price level under the gold standard', *Economic Journal*, Vol. 89, No. 353, pages 13-33.

Barro, R (1982), 'United States inflation and the choice of a monetary standard', in Hall, R E (ed), *Inflation: causes and effects*, University of Chicago Press.

Barsky, R (1987), 'The Fisher hypothesis and the forecastability and persistence of inflation', *Journal of Monetary Economics*, Vol. 19, No. 1, pages 3-24.

Barsky, R and Delong, B J (1991), 'Forecasting pre-WWI inflation: the Fisher effect and the gold standard', *Quarterly Journal of Economics*, Vol. 106, No. 3, pages 815-36.

Barthold, T A and Dougan, W R (1986), 'The Fisher hypothesis under different monetary regimes', *Review of Economics and Statistics*, Vol. 68, No. 4, pages 674-79.

Basu, S and Taylor, A (1999), 'Business cycles in international historical perspective', *Journal of Economic Perspectives*, Vol. 13, No. 2, pages 45-68.

Baxter, M and King, R (1999), 'Approximate band-pass filters for economic time series: theory and applications', *Review of Economics and Statistics*, Vol. 81, No. 4, pages 575-93.

Benati, L (2004), 'Evolving post-world war II U.K. economic performance', *Journal of Money, Credit and Banking*, Vol. 36, No. 4, pages 691-717.

Bergman, U M, Bordo, M D and Jonung, L (1998), 'Historical evidence on business cycles: the international experience', in Fuhrer, J and Schuh, S (eds), *Beyond shocks: what causes business cycles?*, Federal Reserve Bank of Boston, Conference Series No. 42.

Blackburn, K and Ravn, M O (1992), 'Business cycles in the UK: facts and fictions', *Economica*, Vol. 59, No. 236, pages 383-401.

Bordo, M and Kydland, F (1996), 'The gold standard as a commitment mechanism', in Bayoumi, T, Eichengreen, B and Taylor, M (eds), *Modern perspectives on the gold standard*, Cambridge, Cambridge University Press.

Bordo, M and Schwartz, A J (1999), 'Monetary policy regimes and economic performance: the historical record', in Taylor, J B and Woodford, M (eds), *Handbook of macroeconomics*, Amsterdam, North Holland.

Cairncross, A and Eichengreen, B (2003), *Sterling in decline: the devaluations of 1931, 1949, and 1967*, MacMillan.

Capie, F and Collins, M (1983), *The inter-war British economy: a statistical abstract*, Manchester University Press.

Capie, F and Webber, A (1985), *A monetary history of the United Kingdom, 1870-1982*, London, Allen and Unwin.

Cho, I K, Williams, N and Sargent, T J (2002), 'Escaping Nash inflation', *Review of Economic Studies*, Vol. 69, No. 1, pages 1-40.

Christiano, L J, Eichenbaum, M and Evans, C (2005), 'Nominal rigidities and the dynamic effects of a shock to monetary policy', *Journal of Political Economy*, Vol. 113, No. 1, pages 1-45.

Christiano, L J and Fitzgerald, T (2003), 'The band-pass filter', *International Economic Review*, Vol. 44, No. 2, pages 435-65.

Cochrane, J H (1988), 'How big is the random walk in GNP?', *Journal of Political Economy*, Vol. 96, No. 5, pages 893-920.

Cogley, T, Morozov, S and Sargent, T J (2005), 'Bayesian fan charts for UK inflation: forecasting and sources of uncertainty in an evolving monetary system', *Journal of Economic Dynamics and Control*, Vol. 29, No. 11, pages 1,893-925.

Cogley, T and Sargent, T J (2002), 'Evolving post-WWII US inflation dynamics', in Bernanke, B and Rogoff, K (eds), *NBER macroeconomics annuals 2001*, Cambridge, MA, The MIT Press.

Cogley, T and Sargent, T J (2005), 'Drifts and volatilities: monetary policies and outcomes in the post WWII US', *Review of Economic Dynamics*, Vol. 8, April, pages 262-302.

Crafts, N and Mills, T (1994), 'Trends in real wages in Britain, 1750-1913', *Explorations in Economic History*, Vol. 31, No. 2, pages 176-94.

Dunlop, J T (1938), 'The movement of real and money wage rates', *Economic Journal*, Vol. 48, No. 191, pages 413-34.

Eichengreen, B (1992), *Golden fetters: the gold standard and the Great Depression, 1919-1939*. Oxford University Press.

Erceg, C J, Henderson, D W and Levin, A T (2000), ‘Optimal monetary policy with staggered wage and price setting’, *Journal of Monetary Economics*, Vol. 46, No. 2, pages 281-313.

Erceg, C and Levin, A T (2003), ‘Imperfect credibility and inflation persistence’, *Journal of Monetary Economics*, Vol. 50, No. 4, pages 915-44.

Evans, M and Wachtel, P (1993), ‘Inflation regimes and the sources of inflation uncertainty’, *Journal of Money, Credit, and Banking*, Vol. 25, No. 3, pages 475-511.

Fama, E (1976), ‘Short-term interest rates as predictors of inflation’, *American Economic Review*, Vol. 65, No. 3, pages 269-82.

Feinstein, C (1972), *National income, expenditure and output of the United Kingdom, 1855-1965*, Cambridge University Press.

Fisher, I (1922), *The purchasing power of money: its determination and relation to credit, interest and crises*, New York, MacMillan.

Fisher, I (1930), *The theory of interest*, New York, MacMillan.

Friedman, M and Schwartz, A J (1976), ‘From Gibson to Fisher’, *Explorations in Economic Research*, Vol. 3, pages 288-89.

Friedman, M and Schwartz, A J (1982), *Monetary trends in the United States and the United Kingdom*, University of Chicago Press.

Fuhrer, J and Moore, G (1995), ‘Inflation persistence’, *Quarterly Journal of Economics*, Vol. 110, No. 1, pages 127-59.

Gayer, A, Rostow, W and Schwartz, A J (1953), *The growth and fluctuations of the British economy, 1790-1950*, Oxford University Press.

Goodfriend, M and King, R (1997), ‘The new neoclassical synthesis and the role of monetary

policy', in Bernanke, B and Rogoff, K (eds), *NBER macroeconomics annuals 1997*, pages 231-83.

Granger, C W J and Newbold, P (1986), *Forecasting economic time series, II Edition*, Academic Press.

Greasley, D (1989), 'British wages and income, 1856-1913: a revision', *Explorations in Economic History*, Vol. 26, No. 2, pages 248-59.

Hansen, B (1999), 'The grid bootstrap and the autoregressive model', *Review of Economics and Statistics*, Vol. 81, No. 4, pages 594-607.

Hodrick, R J and Prescott, E (1997), 'Post-WWII US business cycles: an empirical investigation', *Journal of Money, Credit, and Banking*, Vol. 29, No. 1, pages 1-16.

Huang, K X, Liu, Z and Phaneuf, L (2004), 'Why does the cyclical behavior of real wages change over time?', *American Economic Review*, Vol. 94, No. 4, pages 836-56.

Ibrahim, I B and Williams, R M (1978), 'The Fisher relationship under different monetary standards', *Journal of Money, Credit, and Banking*, Vol. 10, No. 3, pages 363-70.

Keynes, J M (1925), 'The economic consequences of Mr. Churchill', reprinted in Keynes, J M (1932), *Essays in persuasion*, New York, Harcourt, Brace, and Company.

Keynes, J M (1936), *The general theory of employment, interest and money*, MacMillan, St. Martin's Press.

Keynes, J M (1939), 'Relative movement of real wages and output', *Economic Journal*, Vol. 49, No. 193, pages 34-51.

King, R and Watson, M (1996), 'Money, prices, interest rates, and the business cycle', *Review of Economics and Statistics*, Vol. 78, No. 1, pages 35-53.

King, R and Wolman, A (1999), 'What should the monetary authority do when prices are

sticky?', in Taylor, J B (ed), *Monetary policy rules*, The University of Chicago Press.

Klein, B (1975), 'Our new monetary standard: measurement and effects of price uncertainty, 1880-1973', *Economic Inquiry*, Vol. 13, No. 4, pages 461-84.

Kydland, F and Prescott, E (1990), 'Business cycles: real facts and a monetary myth', Federal Reserve Bank of Minneapolis *Quarterly Review*, Vol. 14, No. 2, pages 3-18.

Levin, A T and Piger, J (2003), 'Is inflation persistence intrinsic in industrial economies?', Federal Reserve Bank of St. Louis, *Working Paper 2002-023E*.

Lucas, R E, Jr. (1973), 'Some international evidence on output-inflation trade-offs', *American Economic Review*, Vol. 63, No. 3, pages 326-34.

Lucas, R E, Jr. (1976), 'Econometric policy evaluation: a critique', *Carnegie-Rochester Conference Series on Public Policy*, Vol. 1, pages 19-46.

Lucas, R E, Jr. (1977), 'Understanding business cycle', *Carnegie-Rochester Conference Series on Public Policy*, Vol. 5, pages 7-29.

Lucas, R E, Jr. (1980a), 'Methods and problems in business cycle theory', *Journal of Money, Credit, and Banking*, Vol. 12, No. 4, Part 2, pages 696-715.

Lucas, R E, Jr. (1980b), 'Two illustrations of the quantity theory of money', *American Economic Review*, Vol. 70, No. 5, pages 1,005-14.

Mankiw, N G and Reis, R (2002), 'Sticky information versus sticky prices: a proposal to replace the New Keynesian Phillips Curve', *Quarterly Journal of Economics*, Vol. 117, No. 4, pages 1,295-328.

McCallum, B (1984), 'On low-frequency estimates of long-run relationships in macroeconomics', *Journal of Monetary Economics*, Vol. 14, No. 1, pages 3-14.

Mishkin, F (1992), 'Is the Fisher effect for real?', *Journal of Monetary Economics*, Vol. 30, No. 2, pages 195-215.

Mitchell, B (1988), *British historical statistics*, Cambridge University Press.

Mitchell, B (1992), *International historical statistics: Europe 1750-1988*, MacMillan Publishers Ltd.

Nelson, C R and Plosser, C I (1982), 'Trends and random walks in macro-economic time series: some evidence and implications', *Journal of Monetary Economics*, Vol. 10, No. 2, pages 139-162.

Newey, W and West, K D (1987), 'A simple positive-semi-definite heteroscedasticity and autocorrelation consistent covariance matrix', *Econometrica*, Vol. 55, No. 3, pages 703-08.

O'Donoghue, J, Goulding, L and Allen, G (2004), 'Consumer price inflation since 1750', available at www.statistics.gov.uk/.

Osborn, D and Sensier, M (2005), 'Modelling UK inflation: persistence, seasonality and monetary policy', Manchester University, *mimeo*.

Ravn, M O and Uhlig, H (2002), 'On adjusting the HP-filter for the frequency of observations', *Review of Economics and Statistics*, Vol. 84, No. 1, pages 371-80.

Rolnick, A J and Weber, W (1997), 'Money, inflation, and output under fiat and commodity standards', *Journal of Political Economy*, Vol. 105, No. 6, pages 1,308-21.

Romer, C (1986), 'Is the stabilisation of the postwar economy a figment of the data?', *American Economic Review*, Vol. 76, No. 3, pages 314-34.

Romer, C (1989), 'The prewar business cycle reconsidered: new estimates of gross national product, 1869-1908', *Journal of Political Economy*, Vol. 97, No. 1, pages 1-37.

Sargent, T J (1983), 'Stopping moderate inflations: the methods of Poincare and Thatcher', in

Dornbusch, R and Simonsen, M H (eds), *Inflation, debt, and indexation*, Cambridge, MA, The MIT Press, pages 54-96.

Sargent, T J (1987), *Macroeconomic theory, II edition*, Orlando, Academic Press.

Sargent, T J (1999), *The conquest of American inflation*, Princeton University Press.

Sargent, T and Williams, N (2003), 'Impacts of priors on convergence and escapes from Nash inflation', NYU and Princeton, *mimeo*.

Schumpeter, E (1938), 'English prices and public finance, 1660-1822', *Review of Economics and Statistics*, Vol. 20, No. 1, pages 21-37.

Sheffrin, S (1988), 'Have economic fluctuations been dampened? Evidence outside the United States', *Journal of Monetary Economics*, Vol. 21, No. 1, pages 73-83.

Smets, F and Wouters, R (2003a), 'An estimated stochastic dynamic general equilibrium model of the euro area', *Journal of the European Economic Association*, Vol. 1, No. 5, pages 1,123-75.

Smets, F and Wouters, R (2003b), 'Shocks and frictions in US business cycles: a Bayesian DSGE approach', European Central Bank and National Bank of Belgium, *mimeo*.

Stock, J (1991), 'Confidence intervals for the largest autoregressive root in US macroeconomic time series', *Journal of Monetary Economics*, Vol. 28, No. 3, pages 435-59.

Stock, J and Watson, M (1999), 'Business cycle fluctuations in US macroeconomic time series', in Taylor, J B and Woodford, M (eds), *Handbook of macroeconomics*, Amsterdam, North Holland.

Svensson, L E O (2003), 'Comment on: The future of monetary aggregates in monetary policy analysis', *Carnegie-Rochester Conference Series on Public Policy*, Vol. 50, pages 1,061-70.

Tarshis, L (1939), 'Changes in real and money wages', *Economic Journal*, Vol. 49, No. 193, pages 150-54.

Whiteman, C (1984), 'Lucas on the quantity theory: hypothesis testing without theory',
American Economic Review, Vol. 74, No. 4, pages 742-49.