



BANK OF ENGLAND

Working Paper No. 357  
A no-arbitrage structural vector  
autoregressive model of the UK yield curve

Iryna Kaminska

December 2008



BANK OF ENGLAND

# Working Paper No. 357

## A no-arbitrage structural vector autoregressive model of the UK yield curve

Iryna Kaminska<sup>(1)</sup>

### Abstract

This paper combines a structural vector autoregression (SVAR) with a no-arbitrage approach to build a multifactor affine term structure model (ATSM). The resulting no-arbitrage structural vector autoregressive (NA-SVAR) model implies that expected excess returns are driven by the structural macroeconomic shocks. This is in contrast to a standard ATSM, in which agents are concerned with non-structural risks. As a simple application of a NA-SVAR model, we study the effects of supply, demand and monetary policy shocks on the UK yield curve. We show that all shocks affect the slope of the yield curve, with demand and supply shocks accounting for a large part of the time variation in bond yields. The short end of the yield curve is driven mainly by the expectations component, while the term premium matters for the dynamics of the long end of the yield curve.

**Key words:** Structural vector autoregression, interest rate risk, essentially affine term structure model.

**JEL classification:** C32, E43, E44.

---

(1) Bank of England. Email: [iryna.kaminska@bankofengland.co.uk](mailto:iryna.kaminska@bankofengland.co.uk)

The views expressed in this paper are those of the author, and not necessarily those of the Bank of England. The author wishes to thank Carlo Favero, Matthew Hurd, Mike Joyce, Peter Lildholdt, LinLin Niu, Monika Piazzesi, Ulf Soderstrom, Peter Westaway, participants at Bank of England, University of York, and Bocconi University-IGIER internal research seminars, and Royal Economic Society 2007 Conference for their valuable suggestions and kind support. This paper was finalised on 9 May 2008.

The Bank of England's working paper series is externally refereed.

Information on the Bank's working paper series can be found at  
[www.bankofengland.co.uk/publications/workingpapers/index.htm](http://www.bankofengland.co.uk/publications/workingpapers/index.htm)

Publications Group, Bank of England, Threadneedle Street, London, EC2R 8AH  
Telephone +44 (0)20 7601 4030 Fax +44 (0)20 7601 3298 email [mapublications@bankofengland.co.uk](mailto:mapublications@bankofengland.co.uk)

## Contents

Summary	3
1 Introduction	5
2 Related literature	8
2.1 No-arbitrage term structure models	8
2.2 Structural VAR models	10
3 The model	11
3.1 A simple example	13
4 Estimation	15
4.1 Data	15
4.2 Model identification	16
5 Results	19
5.1 Model dynamics and fundamental shocks	21
5.2 Model decomposition	25
6 Conclusions	27
Appendix 1: Bond prices under no-arbitrage	29
Appendix 2: Supply-shock identification	30
References	31



## Summary

Monetary policy makers control short-term interest rates. But long-term rates are no less important, since they influence borrowing costs and aggregate demand in the economy. Thus understanding the behaviour of the whole spectrum of interest rates (the ‘yield curve’) is crucial.

While yield curve dynamics have been extensively studied in statistics and finance, these studies abstract from the macroeconomic drivers of yield curve movements. The contribution of this paper is to link the term structure of nominal interest rates to the wider economy, by assuming that all risks affecting the pricing behaviour of agents are related to the underlying (‘structural’) macroeconomic shocks. This approach allows us to enrich financial models of the yield curve with macroeconomic theory, and thus to narrow the existing gap between financial and macroeconomic models.

Thus the paper builds upon and extends two strands of research: previous work on the finance approach to yield curves; and empirical macroeconomic modelling. At the nexus of these two strands, a yield curve model is presented that relates fundamental macroeconomic shocks identified from a macroeconometric model to the bond pricing behaviour of the economic agents. This is in contrast to standard finance models, in which agents are concerned with non-structural risks, which are not directly interpretable. The combination of the macroeconometric and financial models helps us to achieve several goals. Primarily, we are able to model the yield curve across maturities and across time jointly with the macroeconomic dynamics, explaining ‘term premia’ which describe how rates at longer maturities are related to short rates. Additionally, replacing purely statistical factors by macroeconomic variables simplifies the estimation of highly parametrised financial models.

As an application, three underlying shocks to the UK economy are studied, and their roles in determining the term structure of UK nominal interest rates examined. The approach has two steps. First, aggregate supply, aggregate demand and monetary policy shocks are identified from a three-variable model based on the output gap, inflation and short-term interest rate. Second, the shocks’ effects on the nominal yield curve are analysed with the help of a term structure model of interest rates.



The results can be summarised as follows. Demand and supply shocks have different effects on the yield curve. Both supply and demand shocks drive short-term interest rates, whereas demand shocks dominate long-term interest rates. Both demand and supply shocks affect the slope of the yield curve positively on impact. This result confirms previous findings that the slope of the yield curve and economic activity are linked. Finally, the monetary policy shock affects the whole yield curve, with the effect decreasing with maturity.

The results are broadly consistent with the dynamics of yields implied by previous work in empirical macroeconomics. The advantage of the approach is that we are able to decompose long-term interest rates into expected short-term rates and term premia. The results show that the short end of the yield curve moves due to changes in expectations, while movements in the long end are due to the term premia dynamics.

Although the model performs well overall, it does not fit the long end of the yield curve well over the most recent sample, which suggests that including additional macroeconomic variables and shocks might improve the simple model.



## 1 Introduction

The main motivation of this paper is to try to understand how the term structure of nominal interest rates responds to fundamental economic shocks. The innovation is to assume that all risks affecting the pricing behaviour of agents are related to structural macroeconomic shocks identified in a structural vector autoregression (SVAR) framework. This is in contrast with a standard empirical no-arbitrage affine term structure model (ATSM), in which agents are concerned with non-structural risks. Our approach allows us to enrich the partial equilibrium ATSM framework with macroeconomic theory, and thus to narrow the existing gap between the no-arbitrage literature and macroeconomic models.

This paper builds upon and extends two strands of research. The first is the finance no-arbitrage term structure literature, and the second is connected to empirical macroeconomic SVAR models. At the nexus of these two strands, I present a yield curve model that relates fundamental macroeconomic shocks to the bond pricing behaviour of economic agents.

Theoretical and empirical research suggest that the dynamics of the term structure can be explained by a limited number of factors. But what is the nature of the factors driving the yield curve and how are they related to the economy? In canonical arbitrage-free term structure models, the factors driving the term structure are attributed to pure latent factors (see, for example, Duffie and Kan (1996), and Dai and Singleton (2000)). By contrast, a growing macro-finance literature links the dynamics of the term structure to macroeconomic variables, deviating from the pure latent structure, macroeconomists show that the shocks to macroeconomic factors can account for a large part of the time variation in bond yields. For example, in pioneering work introducing macroeconomic variables into a term structure model, Ang and Piazzesi (2003) claim that macro factors explain up to 85% of the variation in US bond yields. More recently, for the United Kingdom, Lildholdt, Panigirtzoglou and Peacock (2007) confirm the importance of macroeconomic factors for the yield curve. They find that inflation and the output gap drive the short end of the yield curve, whereas long-run inflation dominates the long end. However, the shocks in these models are not fully structural. A simple structural model of the macroeconomy based on the Euler equation for consumption and pricing equation for firms is developed by Rudebusch and Wu (2008), who interpret the yield dynamics in terms of a structural macroeconomic model. Even so, they employ a reduced-form pricing kernel,



which conflicts with the specification of the marginal rate of substitution in the Euler equation of their model.

From the macroeconomic literature side, there are a few empirical studies using a SVAR framework to describe the joint dynamics of the macroeconomy and the yield curve. For instance, Evans and Marshall (1998) were among the first to study the effects of monetary policy shocks on the yield curve in a joint macroeconomic-term structure SVAR framework. By including single yields in standard macroeconomic SVARs, they described the dynamics of the yield curve by studying the impulse responses of single yields, devoid of a dynamic term structure model of interest rates. Obviously, the inclusion of separate yields in a macroeconomic VAR is not an efficient approach, since it omits information contained in the whole yield curve. The impulse responses can be modelled only for the yields on observed bonds, while the method has no implications for the yields on bonds with non-traded or intermediate maturities. Moreover, the approach used by Evans and Marshall (1998) does not rule out arbitrage opportunities and hence cannot explain whether the changes in yields are due to a revision of expectations of short-term rates or due to changes in term premia.

We contribute to the macro-finance term structure literature by combining an arbitrage-free term structure model with a SVAR approach. The combination of the SVAR and the ATSM helps us to achieve several goals. Most importantly, we are able to model the yield curve across maturities and across time jointly with the macroeconomic dynamics. In particular, we relate the yield curve to fundamental structural macroeconomic shocks and impose cross-equation no-arbitrage restrictions on the parameters of yields. Additionally, the ability to decompose yields on expected risk-free rates and term premia helps us to better understand the channels through which fundamental shocks affect yields.

The model is estimated in two steps. First, we identify structural fundamental shocks from an SVAR based on macroeconomic variables and the policy rate. Second, following the non-linear least squares approach, as in Ang, Piazzesi and Wei (2006), we estimate the yield parameters (restricted due to no-arbitrage) by minimising the sum of squared fitted errors of the model. The two-step procedure simplifies the estimation of highly parametrised ATSMs considerably.

As an application, we study fundamental shocks to the UK economy and establish their role in



determining the term structure of UK nominal interest rates. A structural VAR is used to identify aggregate supply, aggregate demand, and monetary policy shocks. We then analyse the shocks' effects on the nominal yield curve, with the help of the term structure model of interest rates. More specifically, we estimate a three-variable SVAR model based on the output gap, inflation and the short-term nominal interest rate. Following Blanchard and Quah (1989), supply shocks are identified through long-run restrictions, assuming that supply shocks alone have a long-run impact on the level of output. Therefore, we restrict aggregate demand and monetary policy shocks to have no long-run impact on output. To separate monetary policy shocks from demand shocks, we impose additional short-run restrictions on the variance-covariance matrix of residuals. Thus, in the context of the term structure model, we assume that agents are concerned with fundamental risks of the economy when they price bonds and, combining the SVAR and no-arbitrage approaches, we build a three-factor ATSM for the UK yield curve.

The results can be summarised as follows. We show that demand and supply shocks have different effects on the yield curve. Both supply and demand shocks drive the short end of the yield curve. However, the long end of the yield curve is determined almost entirely by demand shocks, affecting mostly the preference-related term premia rather than the expectations component. Both demand and supply shocks affect the slope of the yield curve positively on impact. This result confirms previous findings that the slope of the yield curve and economic activity are linked (see, for example, Estrella and Hardouvelis (1991), and Harvey (1988), who first documented the leading indicator properties of the yield curve slope for future economic activity). Finally, the monetary policy shock affects the whole yield curve, with the effect decreasing with maturity. Our results are broadly consistent with the dynamics of yields implied by unrestricted SVAR approach (as in Evans and Marshall (1998)). The advantage of our approach is the explicit model of the term premium, which allows us to show that the short end of the yield curve moves due to the changes in expectations, while the long end of the yield curve movements are due to the term premia dynamics.

Although the model performs well overall, it does not fit the long end of the yield curve properly, which suggests that including more factors might improve the simple model.

The rest of the paper is structured as follows. In Section 2 we outline the basic assumptions and implications of the canonical ATSM. We also show how to modify the model and impose a





macroeconomic structure. Section 3 shows how to combine the SVAR and ATSM approaches. The details of the estimation method follow in Section 4. Our results are then presented in Section 5. Finally, some conclusions and possible extensions are provided in Section 6.

## 2 Related literature

In this section, we outline the basic concepts of two related strands of literature, around which this paper is developed, and briefly highlight their main features.

### 2.1 No-arbitrage term structure models

The fundamental assumption of no-arbitrage term structure models is that there are only a few variables,  $X_t$ , relevant for bond pricing (Duffie and Kan (1996), Dai and Singleton (2000)). These models price all bonds in the economy by specifying the dynamics of the state vector  $X_t$ , setting initial conditions for the bond pricing rule, and specifying the market prices of risk,  $\Lambda_t$ . In a discrete-time set-up the three basic assumptions of ATSM take the following form:

1) The transition equation for the state vector relevant for pricing bonds follows the Gaussian VAR:

$$X_t = \mu + \Phi X_{t-1} + \Sigma \varepsilon_t \quad (1)$$

where  $X_t$  is an  $(N \times 1)$ -vector of state variables,  $\varepsilon_t$  is an  $(N \times 1)$ -vector of i.i.d. shocks with zero mean and identity covariance matrix;  $\mu$  is  $(N \times 1)$ ,  $\Phi$  is  $(N \times N)$ ,  $\Sigma$  and is  $(N \times N)$ .

2) The one-period interest rate is a linear function of the state variables:

$$r_t = \delta_0 + \delta_1 X_t, \quad (2)$$

where  $\delta_0$  is a scalar, and  $\delta_1$  is an  $(1 \times N)$ -vector.

3) The prices of risk associated with shocks  $\varepsilon_t$  are an affine function of the state of the economy (see Duffee (2002)):

$$\Lambda_t = \lambda_0 + \lambda_1 X_t \quad (3)$$

for the  $(N \times 1)$  vector  $\lambda_0$ , and the  $(N \times N)$  matrix  $\lambda_1$ . We use market prices of risk to specify a stochastic discount factor that transforms the physical distribution of bond prices into its

risk-neutral equivalent.<sup>1</sup> In the case of the ATSM, the stochastic discount factor takes the form:

$$M_{t+1} \equiv \exp(-r_t) \exp\left(-\frac{1}{2} \Lambda_t' \Lambda_t - \Lambda_t' \varepsilon_{t+1}\right) \quad (4)$$

Under these assumptions, the price and yield of any maturity are affine functions of the state variables:

$$p_{t,n} = A_n + B_n' X_t \quad (5)$$

$$y_{t,n} = -\frac{1}{n} (A_n + B_n' X_t) \quad (6)$$

where  $y_{t,n}$  is a continuously compounded yield on the bond of maturity  $n$  at time  $t$ ; scalar  $A_n$  and the  $(N \times 1)$  vector  $B_n$  depend on the parameters  $\{\lambda_0, \lambda_1, \delta_0, \delta_1, \mu, \Phi, \Sigma\}$  and, as shown in Appendix 1, they are the solutions of the system of difference equations:

$$\begin{aligned} A_{n+1} &= A_n + B_n' \mu - B_n' \Sigma \lambda_0 + \frac{1}{2} B_n' \Sigma \Sigma' B_n - \delta_0 \\ B_{n+1} &= (\Phi - \Sigma \lambda_1)' B_n - \delta_1' \end{aligned} \quad (7)$$

The no-arbitrage ATSM (NA-ATSM) has gained huge popularity in the finance literature due to the fact that the implied affine functions of a few unobservable (latent) factors explain almost all movements of the yield curve (see Duffie and Kan (1996), or Dai and Singleton (2000)).

Nevertheless, the pure ATSM has not gained the same popularity among economists since it is not suitable for many macroeconomic policy applications. There is no theory behind the NA-ATSM apart from the no-arbitrage assumption and the economic nature of the latent factors is unclear. Observing that the short-term rate is an instrument for monetary policy, macroeconomists have proposed a possible solution: to combine no-arbitrage ATSM models with macroeconomic models.

Attempts to incorporate macroeconomic theory into the no-arbitrage models can be divided into three groups. First, one can assume that the state vector is completely unobservable and after that can search for its macroeconomic interpretation by Taylor rules, or by other typical

---

<sup>1</sup>If investors are risk-neutral, the assumption of no-arbitrage implies that  $P_{t,n} = E_t(e^{-r_t} P_{t+1,n-1})$ . However, if investors are risk-averse, then their pricing behaviour differs from that of risk-neutral agents, since the former take into account the amount of risk affecting the future prices. In this case, a stochastic discount factor,  $M_t$ , transforms the observed distribution of prices into a risk-neutral equivalent distribution:  $P_{t,n} = E_t(M_{t+1} P_{t+1,n-1})$ .

macroeconomic relations (see Rudebusch and Wu (2008) who interpret latent factors as the perceived inflation target and output gap, and therefore enrich the state dynamics with variables related to inflation and output). Second, certain authors argue that all factors related to bond pricing are observable. One example of this method is the paper by Ang, Piazzesi and Wei (2006), who combine an empirical unrestricted VAR macro model with a no-arbitrage representation of yields. The paper by Ang, Bekaert and Wei (2007) belongs to the third group, which is a combination of the first two approaches. The authors suppose that the state vector relevant for the bond pricing consists of both, latent and observable, factors. This approach is very popular and there are a number of papers which adopt it: Ang and Piazzesi (2003), Dai and Philippon (2004), Hördahl, Tristani, and Vestin (2006), Lildholdt, Panigirtzoglou and Peacock (2007) among others. Our model also belongs to the third, ‘mixed’, group of ATSMs, as we assume that the state vector consists of both latent and observable factors.

## 2.2 *Structural VAR models*

Returning to the second strand of the literature, our work belongs to a class of macroeconomic structural VAR models that allow a researcher to transform the reduced-form VAR model into a system of structural equations of the economy. The identification of structural shocks is an extremely controversial venture since, by imposing different identifying assumptions, it is possible to derive different conclusions about important economic questions. Restrictions depend on the variables included and on the shocks to be identified. Standard restrictions employed in the literature impose constraints on the short run or long-run impact of particular shocks on variables or informational gaps. For example, the assumption that output is not observed by central banks when making decisions on interest rates results in a *short-run zero restriction*. In another case, a *short-run sign restriction* is necessary to make sure that the impact of a contractionary monetary policy shock is non-negative on the interest rate, and non-positive on real GDP growth and inflation. If only technology shocks had a permanent impact on output and no other shock affected real activity in the long run, then an econometrician would employ a *long run zero restriction*.

Different empirical studies have used a SVAR framework to describe the joint dynamics of the macroeconomy and the yield curve. For instance, Evans and Marshall (1998) were among the first to study the effects of monetary policy shocks on the yield curve in a joint



macroeconomic-term structure SVAR framework.<sup>2</sup> They use the following vector autoregression:

$$\begin{bmatrix} Z_t \\ y_{t,n} \end{bmatrix} = \begin{bmatrix} A(L) & 0 \\ C(L) & D(L) \end{bmatrix} \begin{bmatrix} Z_{t-1} \\ y_{t-1,n} \end{bmatrix} + \begin{bmatrix} a & 0 \\ c & b \end{bmatrix} \begin{bmatrix} \varepsilon_t^Z \\ \varepsilon_t^n \end{bmatrix} \quad (8)$$

However, such SVARs describe the dynamics of the yield curve by studying the impulse responses of single yields, devoid of a dynamic term structure model of interest rates.

The term structure literature, instead, has been operating with rather arbitrary identification schemes. For example, in the work by Ang and Piazzesi (2003), there are five factors (three latent and two principal components for real activity and inflation) and the variance-covariance matrix of residuals is assumed to be block-diagonal: macro factors are recursively identified, latent factors are orthogonal. Unfortunately, it is unclear from the model how these shocks should be interpreted. Rudebusch and Wu (2008) work with two latent factors and VAR dynamics enriched by inflation and the output gap. Again, the interpretation of their shocks is vague. Lildholdt, Panigirtzoglou and Peacock (2007) introduce three factors (two unobserved factors and inflation as the observed factor) and assume a diagonal variance-covariance matrix of residuals. Therefore, their shocks are identified solely by orthogonality, and hence not fully structural.

There are two recent papers that try to identify macroeconomic shocks in a no-arbitrage ATSM framework. These are the papers by Ang, Dong and Piazzesi (2005) and Dai and Philippon (2004). Dai and Philippon (2004) were the first to estimate an ATSM based on structural VAR dynamics. They present a macro-finance model where the pricing kernel is driven by several shocks, one of which is a structural fiscal policy shock identified using the long-run identification strategy of Blanchard and Perotti (2002). The approach of Ang, Dong and Piazzesi (2005) is very different: they are able to identify monetary policy shocks without imposing structural restrictions on the variance-covariance matrix of residuals. The authors show that the same ATSM accommodates several types of Taylor rules: a benchmark Taylor rule, a backward-looking Taylor rule, and a forward-looking Taylor rule.

### 3 The model

In contrast to previous no-arbitrage studies, our paper identifies all fundamental macroeconomic shocks as in the SVAR literature, and then uses ATSM to price bonds with respect to the

---

<sup>2</sup>See also Bagliano and Favero (1998), who estimate VARs with macroeconomic variables, as well as short and long-term yields.

identified shocks.

In our model, the state vector,  $X_t$ , of the yield curve is represented by  $n$  observable macroeconomic factors and one latent factor,  $f_t$ . We denote  $Z_{0t}$  as a  $(n \times 1)$ - vector of observed macroeconomic variables and describe the short-term interest rate by the relationship:

$$r_t = \delta_0 + \delta_1 X_t \equiv \delta_0 + \delta_z Z_{0t} + \delta_f f_t \quad (9)$$

where  $X_t \equiv \begin{bmatrix} Z_{0t} \\ f_t \end{bmatrix}$

While the number of observable macroeconomic factors could be arbitrary, it is important to have only one latent factor, since in this case we can map the state vector into the vector of observable variables,  $Z_t = (Z_{0t}, r_t)'$ ,<sup>3</sup> and therefore to greatly simplify the standard estimation method.

Given (9), the state vector  $X_t$  is mapped to  $Z_t$  by the relation:

$$Z_t = \begin{bmatrix} \mathbf{0}_{(n \times 1)} \\ \delta_0 \end{bmatrix} + \begin{bmatrix} I_{(n \times n)} & \mathbf{0}_{(n \times 1)} \\ \delta_z & \delta_f \end{bmatrix} X_t \quad (10)$$

$$\equiv M_{0((n+1) \times 1)} + M_{((n+1) \times (n+1))} \cdot X_t \quad (11)$$

Observed macroeconomic variables are assumed to follow the SVAR process:

$$AZ_t = \alpha + B(L)Z_{t-1} + \varepsilon_t \quad (12)$$

with  $A = A_{(n+1) \times (n+1)}$ ,  $\alpha = \alpha_{(n+1) \times 1}$ ,  $B = B_{(n+1) \times (n+1)}$ , or, in a reduced-form representation:

$$Z_t = \tilde{\mu} + \tilde{\Phi}(L)Z_{t-1} + \tilde{\Sigma}\varepsilon_t \quad (13)$$

where  $\tilde{\Phi}(L)$  is a polynomial in the lag operator, and the macroeconomic shocks to be identified are given by  $\varepsilon_t$ ,  $\varepsilon_t \sim N(0, I)$ ,  $\tilde{\Sigma}\tilde{\Sigma}' = V$ .

Interestingly, the dynamics of the vector  $Z_t$  are not affected by the no-arbitrage restrictions, since the short-term rate,  $r_t$ , is a risk-free rate and hence has no need to be adjusted for risk. Once the

<sup>3</sup>According to Dai and Singleton (2000), affine term structure models require three latent factors to match yield curve dynamics.

shocks are identified in the macroeconomic SVAR (13), equations (9) and (12) imply that the state vector follows the VAR process:

$$X_t = \mu + \Phi X_{t-1} + \Sigma \varepsilon_t \quad (14)$$

where

$$\mu = M^{-1} \left( \tilde{\mu} - (I - \tilde{\Phi}) M_0 \right) \quad (15)$$

$$\Phi = M^{-1} \tilde{\Phi} M \quad (16)$$

$$\Sigma = M^{-1} \tilde{\Sigma} \quad (17)$$

This structure is a standard assumption about the dynamics of the state vector in affine term structure models.

Equations (14), (3) and (9) constitute a standard affine term structure model with one latent and  $n$  observable factors. The main feature of the model, however, is that the pricing kernel is a function of *structural macroeconomic shocks*,  $\varepsilon_{t+1}$ , identified by the restrictions on SVAR (12). In general, our approach allows us to explain the yield curve with any kind of SVAR model based on the macroeconomic variables and the short-term interest rate. We call the approach a no-arbitrage structural vector autoregressive (NA-SVAR) model of the yield curve and, in what follows, we propose a simple three-variable SVAR model as an application of our approach.

### 3.1 A simple example

We want to explain the dynamics of the state vector by three standard fundamental shocks. These are supply, demand and monetary policy shocks,  $\varepsilon_t = (\varepsilon_t^S, \varepsilon_t^D, \varepsilon_t^{MP})'$ . Since the model defines the short-term rate as a linear combination of the state variables in  $X_t$ , a natural assumption is that the observable state variables are the rate of inflation,  $\pi_t$ , and a real activity variable. Due to the unobservability of potential output and the output gap, we use annual GDP growth,  $g_t$ , as our proxy for real activity. Thus,  $X_t = (g_t, \pi_t, f_t)'$ , similarly to Ang, Dong and Piazzesi (2005), and we describe a short-term interest rate by a Taylor rule:

$$r_t = \delta_0 + \delta_1 X_t \equiv \delta_0 + \delta_g g_t + \delta_\pi \pi_t + \delta_f f_t \quad (18)$$



However, we restrain ourselves from interpreting the latent factor as a monetary policy shock, since the simple benchmark Taylor rule **(18)** is likely to be misspecified.<sup>4</sup> Instead, we identify monetary policy shocks from our structural VAR framework.

The identification scheme is based on the approach by Blanchard and Quah (1989), who use a long-run restriction to identify aggregate supply and aggregate demand shocks in a bivariate model of GNP and unemployment. Blanchard and Quah (1989) attain identification by limiting aggregate demand not to have a permanent effect on the level of GNP. Here we also use the Blanchard-Quah identifying strategy to separate supply shocks from other economic surprises. We interpret the fluctuations in the state vector as due to two types of shocks: shocks that have a permanent effect on output and shocks that do not. The first type of shock is interpreted as a supply shock. In addition, given that the one-period interest rate is among the SVAR variables, one of the non-permanent fundamental shocks could be interpreted as a monetary policy shock.

As is shown in Appendix 2, imposing the long-run exclusion restriction identifying supply shocks is equivalent to imposing the following constraint on the dynamics of the state vector:

$$D \equiv (I_{(3 \times 3)} - \tilde{\Phi})^{-1} \tilde{\Sigma} = \begin{bmatrix} \cdot & 0 & 0 \\ \cdot & \cdot & \cdot \\ \cdot & \cdot & \cdot \end{bmatrix} \quad (19)$$

where  $\cdot$  denotes a free parameter.

To calculate the dynamic effects of the supply shock, we require estimates of  $\tilde{\Phi}$ , which could be obtained by ordinary least squares estimation, and the first column of  $\tilde{\Sigma}$ , which in turn can be

---

<sup>4</sup>For instance, empirical applications find that the lagged interest rate is an omitted variable from the benchmark Taylor rule, a result that is interpreted as interest rate smoothing by the monetary policy authorities (see, for example, Clarida, Gali and Gertler (2000)).

obtained once we know the matrix  $D$ . Indeed, note that

$$\begin{aligned}
DD' &= (I_{(3 \times 3)} - \tilde{\Phi})^{-1} \tilde{\Sigma} \tilde{\Sigma}' (I_{(3 \times 3)} - \tilde{\Phi}')^{-1} \\
&= (I_{(3 \times 3)} - \tilde{\Phi})^{-1} V_0 (I_{(3 \times 3)} - \tilde{\Phi}')^{-1} \\
&= \begin{bmatrix} d_{11} & 0 & 0 \\ d_{21} & d_{22} & d_{23} \\ d_{31} & d_{32} & d_{33} \end{bmatrix} \begin{bmatrix} d_{11} & d_{21} & d_{31} \\ 0 & d_{22} & d_{32} \\ 0 & d_{23} & d_{33} \end{bmatrix}' \\
&= \begin{bmatrix} d_{11}^2 & d_{21}d_{11} & d_{31}d_{11} \\ d_{21}d_{11} & d_1 & d_2 \\ d_{31}d_{11} & d_2 & d_3 \end{bmatrix}
\end{aligned} \tag{20}$$

Thus, the first element of  $D$ ,  $d_{11}$ , can be obtained given  $\tilde{\Phi}$  and the variance-covariance matrix of residuals  $V_0$ , assuming that  $d_{11} > 0$ . Given  $d_{11}$ , the elements  $d_{21}, d_{31}$  can be easily estimated together with the first column of  $\tilde{\Sigma}$ .

Additionally, we impose short-run restrictions to distinguish between the two remaining shocks. We impose standard zero restrictions to identify monetary policy shocks, under which the monetary policy actions have no immediate effect on inflation and real output:<sup>5</sup>

$$\tilde{\Sigma} = \begin{bmatrix} \cdot & \cdot & 0 \\ \cdot & \cdot & 0 \\ \cdot & \cdot & \cdot \end{bmatrix} \tag{21}$$

Demand shocks are thereby identified by residual.

## 4 Estimation

### 4.1 Data

We use monthly data on continuously compounded nominal spot yields from the Bank of England's data set, assuming them to be default risk free. These yield curve data are estimated

<sup>5</sup>Since in this case the model would be overidentified, we alternatively relax the assumption that monetary policy shock has no effect on output in the short run and thus let  $\tilde{\Sigma}(1, 3)$  be a free parameter. The results do not change significantly.

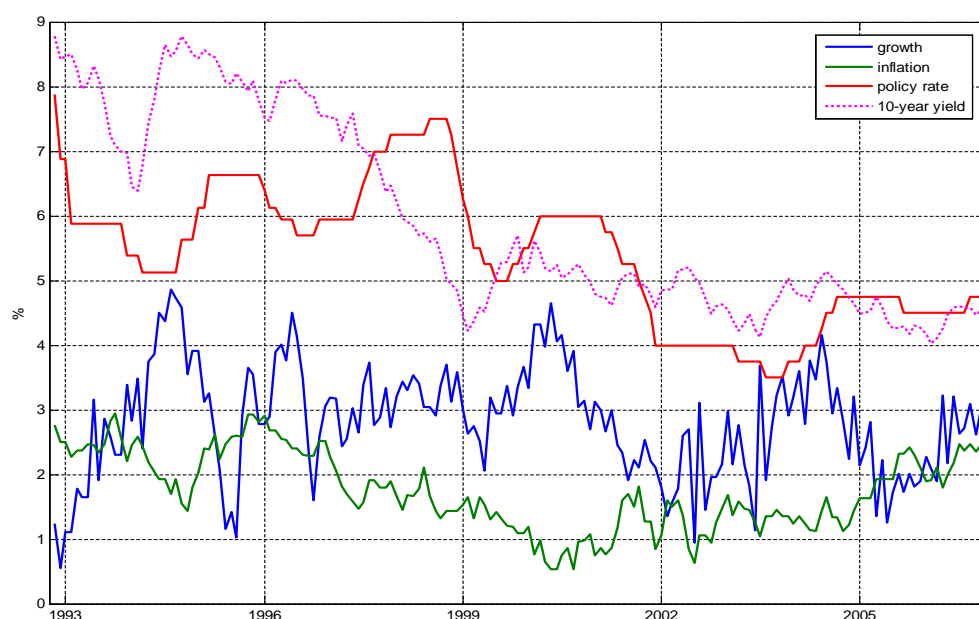


by fitting a cubic spline through general collateral (GC) repo rates and conventional government bonds.<sup>6</sup> To estimate the model we use a wide range of maturities: one month, nine months, twelve months, three years, five years, seven years, and ten years.

While the relationship between yields might be stable over time, the relationship between interest rates and macroeconomic variables is likely to have changed over time. Thus we limit our analysis to the recent monetary policy regime, ie the period of inflation targeting. We have restricted our sample period to be from October 1992 to December 2006.

As a proxy for inflation, we use annual CPI inflation.<sup>7</sup> Annual monthly GDP growth real-time estimates are taken from the NIESR data set. The series are displayed in Chart 1.

**Chart 1: Observed macroeconomic time series**



#### 4.2 Model identification

For our particular sample and variables, we specify the dynamics of the state vector by a VAR(1):

$$Z_t = \tilde{\mu} + \tilde{\Phi}_1 Z_{t-1} + \tilde{\Sigma} \varepsilon_t \quad (22)$$

<sup>6</sup>See Anderson and Sleath (1999). The data are available from the Bank of England's website, [www.bankofengland.co.uk](http://www.bankofengland.co.uk).

<sup>7</sup>The results are similar for RPIX inflation, which was the United Kingdom's target measure during 1992-2003.

It is easy to verify that in our case the exclusion restriction (19) for identification of supply shocks takes the form:

$$\left(I_{(3 \times 3)} - \tilde{\Phi}_1\right)^{-1} \tilde{\Sigma} = \begin{bmatrix} \cdot & 0 & 0 \\ \cdot & \cdot & \cdot \\ \cdot & \cdot & \cdot \end{bmatrix} \quad (23)$$

The impulse response  $\gamma_h$  of  $Z_{t+h}$  to a unit shock in  $\varepsilon_t$  can then be computed as

$$\gamma_h = \tilde{\gamma}_h \tilde{\Sigma} \quad (24)$$

$$\tilde{\gamma}_h = \tilde{\Phi}_1 \tilde{\gamma}_{h-1} \quad (25)$$

with initial conditions  $\tilde{\gamma}_{-1} = 0$ ,  $\tilde{\gamma}_0 = I_{3 \times 3}$ . Here the  $(j, l)$  element of  $\gamma_h$  represents the response of  $j$ th element in  $Z_{t+h}$  to a unit shock in the  $l$ th element of  $\varepsilon_t$ . (See, for example, Christiano, Eichenbaum and Evans (1999).)

In constructing confidence intervals for impulse responses, we use bootstrap simulated distribution percentiles, ie extract the relevant bands directly from the ordered replications at each horizon. Since the simple bootstrap method suffers from small sample biasedness and lack of scale invariance, we use a ‘bootstrap after the bootstrap’ procedure suggested by Kilian (1998). The approach is summarised in Canova (2007, Chapter 4).

Let  $\alpha = \{\lambda_0, \lambda_1, \delta_0, \delta_1, \mu, \Phi, \Sigma\}$  be the set of free parameters in the model. To estimate yield curve parameters and extract the latent factor, we use the approach attributed to Chen and Scott (1993). In this setting,  $N$  unobservable factors are computed by assuming that  $N$  bond yields are measured without error. Other interest rates are assumed to be measured with error and provide overidentifying restrictions. In our joint macro-finance model, there is only one latent factor, and thus we assume that only one yield, a one-month rate,  $r_t$ , is observed exactly. Although in the approach of Chen and Scott (1993), the choice of the yields measured without errors is arbitrary, in our case it is natural to assume that the one-month rate is observed without error, as it is represented by the perfectly observed policy rate. The vector  $Y_t^{Er}$  of the remaining bond yields is instead observed with independently distributed zero-mean errors. This assumption has the additional important advantage that we can implement a two-step estimation procedure, which

drastically decreases the number of parameters to be estimated compared to a one-step maximum likelihood approach.

Since the SVAR of the observed variables **(13)** is not affected by no-arbitrage restrictions, we can estimate the VAR parameters  $\tilde{\mu}$ ,  $\tilde{\Phi}$ ,  $\tilde{\Sigma}$  by ordinary least squares (OLS) in the first step. Then, in the second step, given the VAR estimates, we map the observed variables into the state vector by equation **(26)** and get the estimates for the state dynamics and the risk price parameters by the GMM method proposed by Ang, Piazzesi and Wei (2006). Namely, we minimise the sum of squared fitting errors of the model

$$\min_{\{\lambda_0, \lambda_1, \delta_0, \delta_1\}} \sum_{n=1}^N \sum_{t=1}^T (y_{t,n} - \hat{y}_{t,n}^M)^2$$

where we compute model-implied yields,  $\hat{y}_{t,n}^M = -\frac{1}{n} (A_n + B_n' X_t)$ , with the factors,  $X_t$ , extracted from the inverted state relation **(10)** of the model:

$$X_t = M^{-1}[Z_t - M_0] \tag{26}$$

with

$$M_0 = \begin{bmatrix} 0 & 0 & \delta_0 \end{bmatrix}', \quad M = \begin{bmatrix} 1 & 0 & 0 \\ 0 & 1 & 0 \\ \delta_g & \delta_\pi & \delta_f \end{bmatrix}$$

The standard errors are calculated using two-step GMM, with moments from each stage of the procedure as in Ang, Piazzesi and Wei (2006).

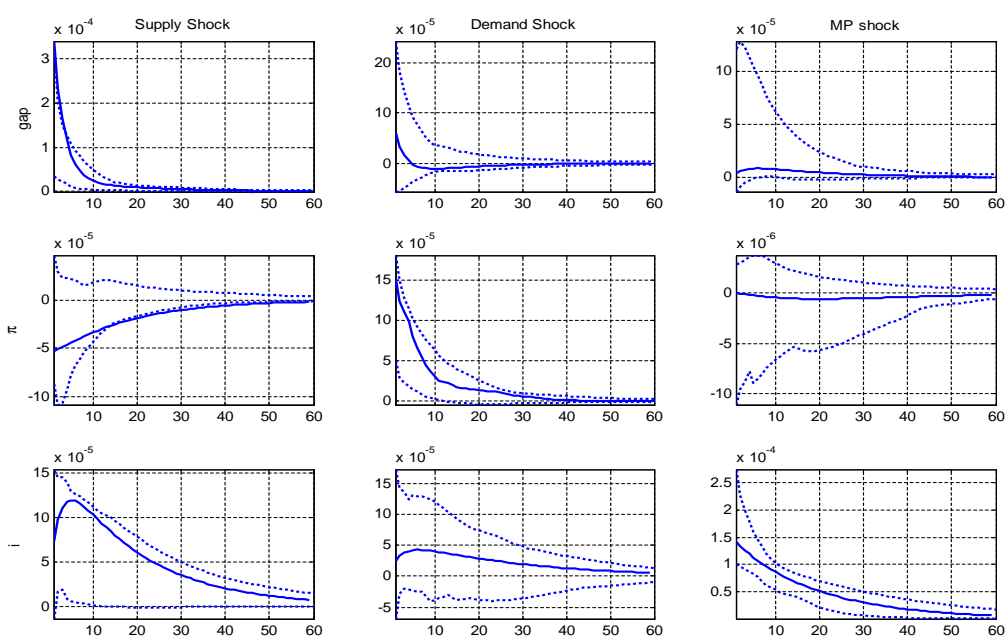
Due to the presence of the latent factor, the model is not identified: the latent factor could be arbitrarily scaled and shifted, producing observationally equivalent systems. We therefore normalise the model by imposing the loading of the short rate on the latent factor  $\delta_f = 1$ , and by constraining the mean of the latent factor to be zero. This normalisation relates the short rate equation **(9)** to a Taylor rule, where the latent factor plays a role of a residual. We further assume that the market prices of risk affecting the time variation of the risk premia are represented by matrix  $\lambda$ . Since several elements were insignificant when we initially estimated the model with full matrix  $\lambda_1$ , we restrict them to be zeros:

$$\lambda_1 = \begin{pmatrix} \lambda_{11} & 0 & \lambda_{13} \\ 0 & 0 & \lambda_{23} \\ 0 & 0 & \lambda_{33} \end{pmatrix}.$$

## 5 Results

To explain the dynamics of the yield curve, we first apply OLS to estimate the reduced-form VAR for GDP growth, CPI inflation and the short-term interest rate. The structural residuals are then retrieved by the help of long-run and short-run restrictions. The responses of the observed variables to the fundamental shocks are shown in Chart 2. The impulse response functions of the VAR confirm the findings of Blanchard and Quah (1989): supply shocks permanently affect the level of output due to their strictly positive effect on output growth and negatively affects inflation on impact. After a negative response to the positive supply shock, inflation increases and comes back to zero after approximately four years. A positive supply shock has a significant positive and persistent effect on the short-term interest rate. A positive demand shock increases both inflation and output growth, but the effect of demand on output is statistically insignificant. Monetary policy in our model has a negligible impact on output and inflation, which suggest that the example at hand is a simplistic representation of the monetary policy reaction function. Including additional macroeconomic variables, to which monetary policy could react (for example, fiscal variables), might improve the identification of shocks.

**Chart 2: Impulse response functions of observable variables**



The estimated parameters determining market prices of risk are reported in Table A. The parameters in  $\lambda_0$ , affecting only the constant yield coefficient ( $-\frac{1}{n}A_n$ ) are significantly different from zero (see (6)), which means that the fundamental risks affect the average term spreads and expected returns. The parameters in  $\lambda_1$ , affecting both the time variation in the yields and indirectly the constant yield coefficient, are significantly different from zero as well. Thus the hypothesis that  $\lambda_{0i} = \lambda_{1i} = 0$  for all  $i$ , under which the risk premium is zero and investors are risk-neutral, is rejected by the model.

**Table A: Market prices of risk estimates**

Prices of risk, $\lambda_0$			Prices of risk, $\lambda_1$		
			$\lambda_{11}$	-144.4	(32.9)
			$\lambda_{21}$	0	—
			$\lambda_{31}$	0	—
$\lambda_{0g}$	0	—	$\lambda_{12}$	0	—
$\lambda_{0\pi}$	0.08	(0.03)	$\lambda_{22}$	0	—
$\lambda_{0f}$	0.26	(0.12)	$\lambda_{32}$	0	—
			$\lambda_{13}$	-14.20	(10.60)
			$\lambda_{23}$	-13.43	(8.83)
			$\lambda_{33}$	9.89	(10.02)

Note: Estimated standard errors in parentheses.

Table B reports first and second moments of the observed yields and those predicted by the estimated model. We see that the model fits the short end of the yield curve reasonably well, but the long end is not fully captured: long-term yields implied by the model are less volatile than in the data. This unexplained variance is attributed to the measurement errors. The issue of a large ‘excess volatility’ in long-term interest rates is not new in the literature. It was raised more than 25 years ago by Shiller (1979) and it is still relevant today (see, for instance, Ellingsen and Söderstrom (2004), who confirm that observed long-term interest rates seem to be excessively sensitive to fundamental innovations).

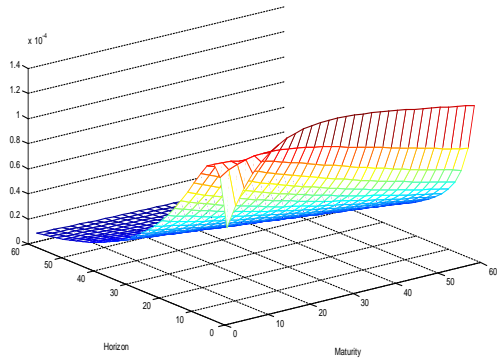
**Table B: Model implied and observed moments**

	1st moments		2nd moments	
	Data	Model	Data	Model
1-month	5.42	5.42	1.09	1.09
9-month	5.34	5.35	1.03	1.01
1-year	5.39	5.37	1.05	0.99
3-year	5.69	5.66	1.26	1.00
5-year	5.87	5.83	1.35	1.00
7-year	5.92	5.91	1.42	1.04
10-year	5.95	5.87	1.51	1.09

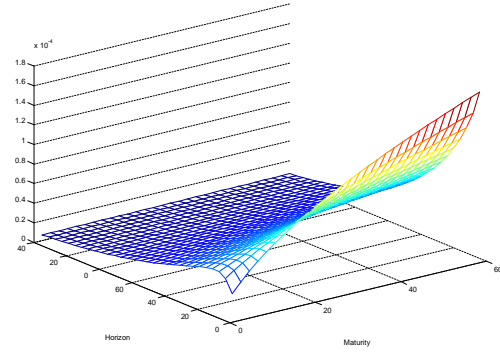
### **5.1 Model dynamics and fundamental shocks**

Charts 3-5 show how our identified fundamental shocks affect the yield curve. More precisely, each plot shows the reaction of all maturities to a one unit standard deviation impulse to each fundamental shock. The monetary policy shock shifts the level of the yield curve upward with the effect decreasing with maturity, as reported by Ang and Piazzesi (2003). Supply shocks by contrast have a smaller effect on short-term interest rates, but a larger effect on long rates, thus increasing the slope of the yield curve on the impact, which is the same pattern Evans and Marshall (2001) present for an unrestricted SVAR of the US yield curve. In our model, demand shocks increase long-term interest rates on average, with the effect increasing with maturity. These results confirm the well-known empirical finding that the slope of the yield curve and economic activity are interrelated: an increase in the slope tends to indicate higher GDP growth in the future (see Estrella and Hardouvelis (1991) and Harvey (1988)).

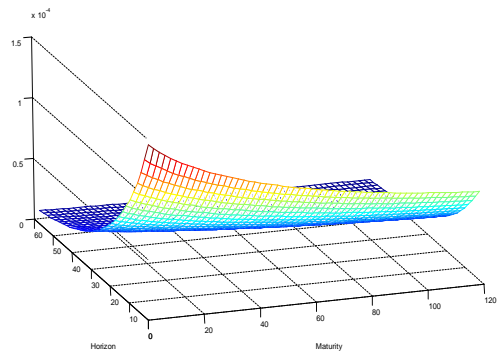
**Chart 3: The impulse response function of the yield curve with respect to a one standard deviation supply shock. X-axis: maturity in months. Y-axis: projection horizon, months**



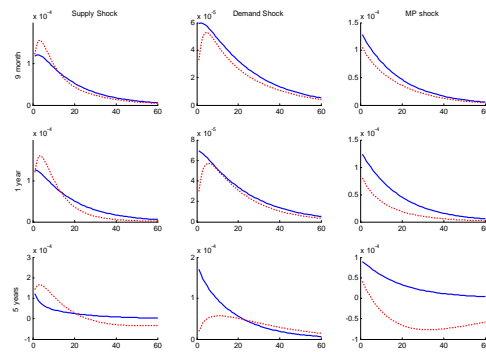
**Chart 4: The impulse response function of the yield curve with respect to a one standard deviation demand shock. X-axis: maturity in months. Y-axis: projection horizon, months**



**Chart 5: The impulse response function of the yield curve with respect to a one standard deviation monetary policy shock**



**Chart 6: Model implied responses of the yield curve to the fundamental shocks (solid line) and impulse responses of the yield curve according to the model by Evans and Marshall (1998), see equation (27) (dotted line)**



In addition, we would like to compare the impulse responses of yields produced by our model to that by Evans and Marshall (1998), that is without imposing no-arbitrage restrictions. However, we met several difficulties in implementing a direct comparison. For example, the lag length optimal for the VAR of the state vector produces very imprecise estimates of the yield equation in (8), or, for certain cases, the companion matrix in (8) could have eigenvalues outside the unit circle. Thus, in order to compare the most appropriate impulse responses, we impose additional zero restrictions on the yield parameters in VAR (8) and estimate the following form of VAR:

$$\begin{bmatrix} Z_t \\ y_{t,n} \end{bmatrix} = \begin{bmatrix} \tilde{\mu} \\ c_{0n} \end{bmatrix} + \begin{bmatrix} \tilde{\Phi}(L) & 0 \\ C^n(L) & 0 \end{bmatrix} \begin{bmatrix} Z_{t-1} \\ y_{t-1}^n \end{bmatrix} + \begin{bmatrix} \tilde{\Sigma} & 0 \\ c_n & 1 \end{bmatrix} \begin{bmatrix} \varepsilon_t^Z \\ \varepsilon_t^n \end{bmatrix} \quad (27)$$

These restrictions assure that the yields implied by both models are functions of the same state variables, since our model explains the dynamic of yields by the following state-space model:

$$\begin{cases} Z_t = \tilde{\mu} + \tilde{\Phi}(L)Z_{t-1} + \tilde{\Sigma}\varepsilon_t \\ y_{t,n} = \alpha_n + \beta_n(L)Z_t + \zeta_t^n \end{cases} \quad (28)$$

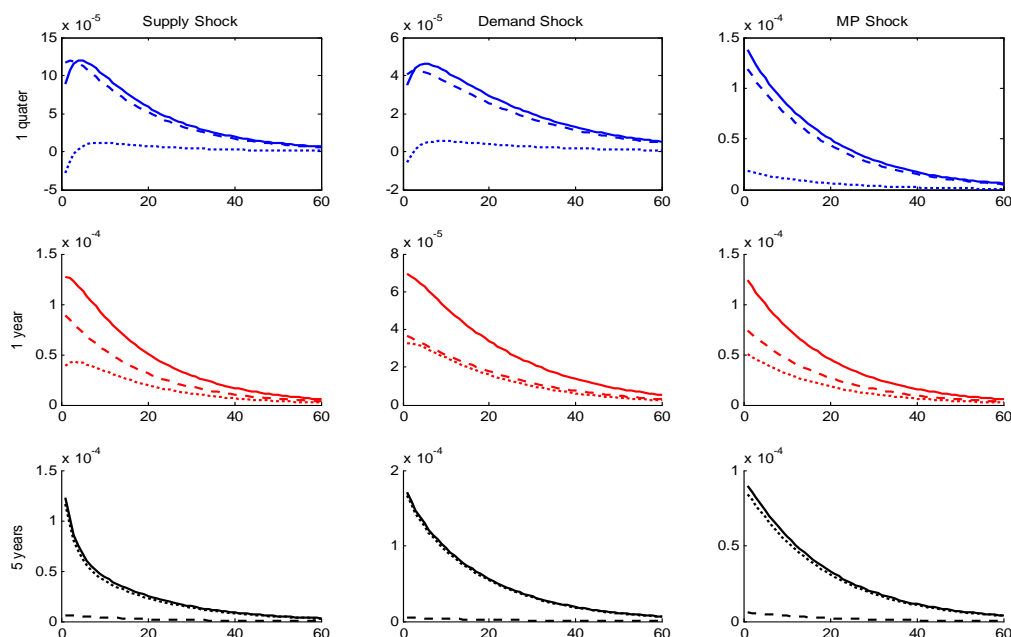
where  $\zeta_t^n$  is a measurement error of the  $n$ -maturity yield. The difference between (27) and (28) is the no-arbitrage restrictions imposed on the coefficients  $\alpha_n, \beta_n$ . Chart 6 shows the impulse responses of the yields implied by our model and by Evans and Marshall's (1998) approach. The only inconsistency is seen when comparing the impact of monetary policy shocks on the long end of the yield curve. While both models imply that the long-term yields should increase on impact, Evans and Marshall's (1998) model suggests that the effect of the monetary policy shock does not vanish even after ten years, which is rather counterintuitive. In general, both models produce similar short-term yield impulse responses to the whole range of the shocks.

While the approach by Evans and Marshall (1998) describes the dynamics of observed yields consistently with the NA-SVAR approach, it cannot explain whether changes are due to the revision of expectations or due to changes in risk premia. The advantage of our approach is that we have a complete model of the yield curve with its decomposition into expectations of risk-free rate and risk premia. Chart 7 explains which of the yield components, expectations or risk premia, has a major impact on the dynamics of the yield curve. We find that the expectations component,  $\sum_{i=0}^{n-1} E_t(r_{t+i})$ , explains almost all movements of the short end of the model implied yield curve, while it has little explanatory power for the long end of the yield curve. The results are consistent with traditional term structure models, which regard long-term interest rates as tightly linked to an average of expected future short-term interest rates. Thanks to this averaging, the traditional models imply that news about the cyclical dynamics of the economy should have a



larger effect on short-term interest rates than on long-term interest rates. Therefore, our results complement standard term structure models by explaining the movements of the long end of the curve by changes in preferences (reflected in term premia), rather than by news about the cyclical dynamics of economics (reflected in the expectations component).

**Chart 7: The impulse response functions of the yield curve decomposition with respect to a one standard deviation structural shock. Solid line: model-implied yields. Dotted line: risk premia. Dashed line: risk-free expectations.**



Finally, a useful supplementary description of yield curve dynamics can be obtained from the variance decomposition shown in Table C. The one-month yield is driven by all three shocks, but predominantly by monetary policy. The twelve-month yield is driven by supply and monetary policy shocks and, to a lesser extent, by demand shocks. Movements in the ten-year yield can be attributed to changes in demand: shocks to demand determine the long end of the term structure by more than 80%. This result becomes intuitive once we remember that, at the long end of the yield curve, demand shocks affect the preferences-related term premium rather than the expectations component. Interestingly, monetary policy shocks have very little explanatory power for the variance of the long end of the yield curve (less than 7%). This implication is consistent with recently observed data: UK long-term interest rates have not responded to the

tighter monetary policy in 2006 and have remained at low levels.

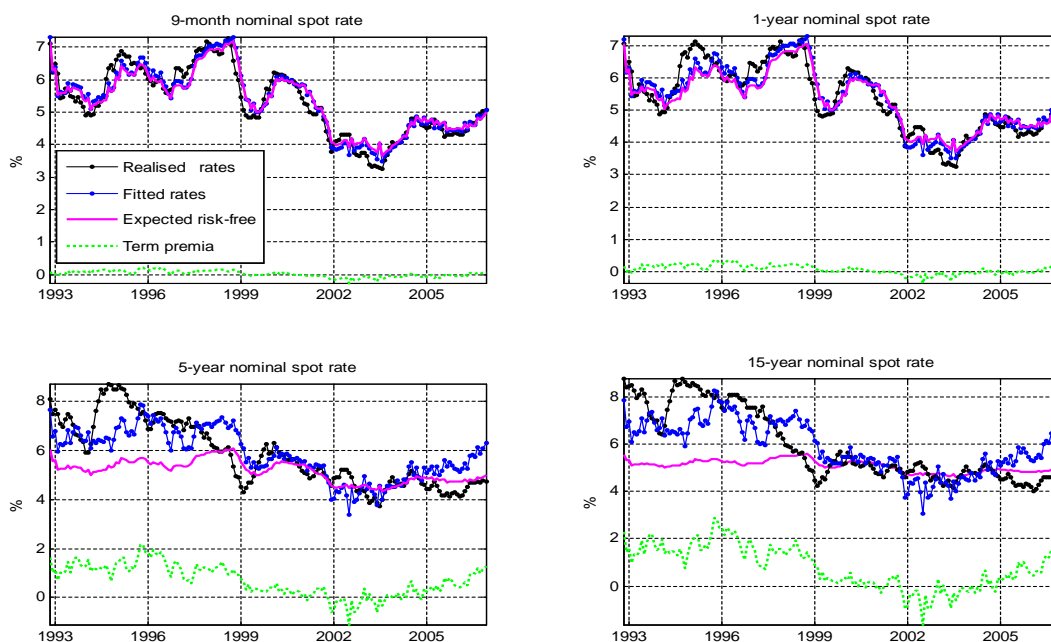
**Table C: Model variance decomposition**

Forecast horizon	Supply	Demand	MP
1-month yield			
1 month	20.7	2.1	76.9
12 months	46.3	6.2	47.5
60 month	48	8.2	43.8
12-month yield			
1 month	44.6	13.1	42.3
12 months	47.1	14.7	38.2
60 month	46.3	16.3	37.4
10-year yield			
1 month	10.8	82.6	6.5
12 months	4.2	87.6	8.2
60 month	3.4	87.9	8.7

## 5.2 *Model decomposition*

In this subsection, we examine the model's implied decomposition of fitted nominal rates into expected future risk-free rates and term premia. Chart 8 shows this decomposition for short, medium and long-term maturities. As might have been expected, for shorter maturities, movements in expected future rates are more volatile than for longer maturities. The volatility of long-maturity yields, instead, is explained by term premia. In particular, with almost constant average expected short-term yields over fifteen-year, the decomposition attributes all movements in fifteen-year model-implied yields to term premia.

**Chart 8: Decompositions of model implied short, medium and long-term yields on risk-free expectations and term premia**



Interestingly, the model suggests that, as a function of maturity, the average term premium has a hump shape: it increases up to eleven-year maturity and then gradually decreases. For example, on average, investors required a positive premium of 0.03% on one-year maturity bonds, 0.96% on ten-year maturity bonds and 0.86% on fifteen-year maturity bonds. Over the sample period, our short term premium estimates appear to be very small and stable, while the model suggests that the term premia for long-term maturities decreased significantly in the mid-1990s and then was negative during 2001-04.

Although our simple NA-SVAR model provides a good fit for short and medium maturities, it cannot explain the recent conundrum, ie the fall in UK long-term yields that started in 2004. The model implied long-term yields have been persistently higher than those observed in the data since 2005, producing very large residuals. This inconsistency can be easily explained by the properties of the model, which implies that long-term yields are positive linear functions of macroeconomic variables that have been increasing in the UK economy since 2005. This result suggests that, while CPI inflation, GDP growth and policy rates are important for bond pricing

from a theoretical and empirical perspective, they are not sufficient to explain long-term maturity prices in the United Kingdom. This is very much in line with similar conclusions in Rudebusch, Swanson and Wu (2006), who applied the macro-finance model by Rudebusch and Wu (2008) to a more recent sample: *'Low level of long-term bond yields in the U.S. during the 2004–2005 period does appear to be a conundrum when viewed through a macro-finance lens. Specifically, neither of the two macro-finance empirical models we consider is able to explain the recent low level of, or the fall in, long-term bond yields. This finding is remarkable given that both models fit the earlier long-term yield data quite well.'*

Indeed, a simple macro-finance model, like ours or that of Rudebusch and Wu (2008), does not consider any recent sector-specific features, such as increased demand for long-maturity bonds from UK pension funds. Moreover, the model's assumption of no structural change represents another caveat with the framework. However, these two caveats would probably apply to most of the other available term structure models.

## 6 Conclusions

This paper attempts to identify fundamental economic shocks in an ATSM framework using an SVAR approach. Further, we show how bond prices can respond to fundamental shocks in the economy. As a simple example of the NA-SVAR approach, we have chosen a three macroeconomic factor model of the UK yield curve. We interpret fluctuations in the state vector as due to two types of shocks: those that have permanent effects on output, and those that do not. The first type is interpreted as a supply shock, whereas the others are related to demand and monetary policy.

Under this interpretation we show that supply shocks affect the whole yield curve, while positive demand shocks increase mostly the long end of the yield curve on impact and thus increase the slope of the yield curve. Demand and supply shocks account for a large part of the time variation in bond yields. In particular, demand shocks explain more than 80% of the variation in the long end of the UK yield curve. Moreover, we find that the short end of the yield curve is driven mostly by expectations, while the long end of the curve is mostly driven by changes in risk premia.



As a next step, additional structural identified shocks could be introduced. This would be a promising direction for NA-SVAR models. In addition, since the NA-SVAR model incorporates nominal yields and inflation expectations, it has implications for the real yield curve. That could also be a fruitful avenue for future research.



## Appendix 1: Bond prices under no-arbitrage

In this section we specify the recursive structure of the coefficients in the bond pricing equation.

Putting together all assumptions made in Section 2.1, we get

$$\begin{aligned}
 p_t(n+1) &= E_t \{m_{t+1} + p_{t+1}(n)\} + \frac{1}{2} \text{Var}_t \{m_{t+1} + p_{t+1}(n)\} \\
 &= E_t \left\{ -R_{1,t} - \frac{\lambda'_t \lambda_t}{2} - \lambda'_t \varepsilon_{t+1} + A_n + B'_n X_{t+1} \right\} + \frac{1}{2} \text{Var}_t \{m_{t+1} + p_{t+1}(n)\} \\
 &= -R_{1,t} - \frac{\lambda'_t \lambda_t}{2} + A_n + E_t [B'_n (\mu + \Phi X_t + \Sigma \varepsilon_{t+1})] + \frac{1}{2} \text{Var}_t \{-\lambda'_t \varepsilon_{t+1} + B'_n \Sigma \varepsilon_{t+1}\} \\
 &= -\delta_0 - \delta'_1 X_t - \frac{\lambda'_t \lambda_t}{2} + A_n + B'_n (\mu + \Phi X_t) + \frac{1}{2} \text{Var}_t \{(B'_n \Sigma - \lambda'_t) \varepsilon_{t+1}\} \\
 &= -\delta_0 - \delta'_1 X_t - \frac{\lambda'_t \lambda_t}{2} + A_n + B'_n (\mu + \Phi X_t) + \frac{(-\lambda'_t + B'_n \Sigma) (-\lambda'_t + B'_n \Sigma)'}{2} \\
 &= \left( -\delta_0 + A_n + B'_n \mu + \frac{1}{2} B'_n \Sigma \Sigma' B_n - B'_n \Sigma \lambda_0 \right) + (-\delta'_1 - B'_n \Sigma \lambda_1 + B'_n \Phi) X_t
 \end{aligned}$$

We get  $A_{n+1}$ ,  $B_{n+1}$  as a solution of the system of difference equations with initial condition  $A_1 = \delta_0$ ,  $B_1 = -\delta'_1$  :

$$\left\{ \begin{array}{l} A_{n+1} = A_n + B'_n \mu - B'_n \Sigma \lambda_0 + \frac{1}{2} B'_n \Sigma \Sigma' B_n - \delta_0 \\ B_{n+1} = (\Phi - \Sigma \lambda_1)' B_n - \delta'_1 \end{array} \right\} \quad (\text{A-1})$$

Thus, the continuously compounded yield on a zero-coupon bond of maturity  $n$ , is an affine structure of the state:

$$y_t(n) = -\frac{1}{n} (A_n + B'_n X_t) \equiv a_n + b'_n X_t \quad (\text{A-2})$$

## Appendix 2: Supply-shock identification

In our empirical example, we identify supply shocks by constraining other disturbances to have a zero long-run effect on output. Technically, we impose long-run restrictions, assuming that supply shock  $\varepsilon_t^S$  is the only shock that has a permanent effect on output. Formally, this exclusion constraint is specified by:

$$\lim_{j \rightarrow \infty} [E_t g_{t+j} - E_{t-1} g_{t+j}] = f(\varepsilon_t^S) \quad (\mathbf{B-1})$$

Below shows under which conditions the left-hand side of **(B-1)** will depend only on supply shocks.

### Lemma 1

$$\lim_{j \rightarrow \infty} [E_t g_{t+j} - E_{t-1} g_{t+j}] = e1_{(1 \times 3)} \cdot \left( (I_{(3 \times 3)} - \tilde{\Phi})^{-1} \tilde{\Sigma} \varepsilon_t \right)$$

where  $e1_{(1 \times 3)} = [1 \ 0 \ 0]$  is a selection row vector.

In terms of the state vector dynamics,

$$\begin{aligned} E_t X_{t+j} &= \tilde{\Phi} X_{t+j-1} + \tilde{\Sigma} \varepsilon_t = \tilde{\Phi}(\tilde{\Phi} X_{t+j-2} + \tilde{\Sigma} \varepsilon_t) + \tilde{\Sigma} \varepsilon_t \\ &= \tilde{\Phi}^2 X_{t+j-2} + \tilde{\Phi} \tilde{\Sigma} \varepsilon_t + \tilde{\Sigma} \varepsilon_t = \dots \\ &= \tilde{\Phi}^{j+1} X_{t+j-1} + \tilde{\Phi}^j \tilde{\Sigma} \varepsilon_t + \tilde{\Phi}^{j-1} \tilde{\Sigma} \varepsilon_t + \dots + \tilde{\Sigma} \varepsilon_t; \\ E_{t-1} X_{t+j} &= \tilde{\Phi}^{j+1} X_{t+j-1}, \end{aligned}$$

implying that

$$\begin{aligned} \lim_{j \rightarrow \infty} [E_t X_{t+j} - E_{t-1} X_{t+j}] &= \lim_{j \rightarrow \infty} (\tilde{\Phi}^j + \tilde{\Phi}^{j-1} + \dots + I_{(3 \times 3)}) \tilde{\Sigma} \varepsilon_t \\ &= (I_{(3 \times 3)} - \tilde{\Phi})^{-1} \tilde{\Sigma} \varepsilon_t \end{aligned}$$

Adding the selection vector into the last formula completes the proof.



## References

- Anderson, N and Sleath, J (1999)**, ‘New estimates of the UK real and nominal yield curves’, *Bank of England Quarterly Bulletin*, November, pages 384-92.
- Ang, A, Bekaert, G and Wei, M (2007)**, ‘The term structure of real rates and expected inflation’, *NBER Working Paper no. 12930*.
- Ang, A, Dong, S and Piazzesi, M (2005)**, ‘No-arbitrage Taylor rules’, *unpublished manuscript*.
- Ang, A and Piazzesi, M (2003)**, ‘A no-arbitrage vectorautoregression of term structure dynamics with macroeconomic and latent variables’, *Journal of Monetary Economics*, Vol. 50, No. 4, pages 745-87.
- Ang, A, Piazzesi, M and Wei, M (2006)**, ‘What does the yield curve tell us about GDP growth?’, *Journal of Econometrics*, Vol. 127 (1-2), pages 359-403.
- Bagliano, F and Favero, C (1998)**, ‘Measuring monetary policy with VAR models: an evaluation’, *European Economic Review*, Vol. 42, pages 1,069–112.
- Blanchard, O and Perotti, R (2002)**, ‘An empirical characterization of the dynamic effects of changes in government spending and taxes on output’, *Quarterly Journal of Economics*, Vol. 117, No. 4, pages 1,329-68.
- Blanchard, O and Quah, D (1989)**, ‘The dynamics effect of aggregate demand and supply disturbances’, *American Economic Review*, Vol. 79, No. 4, pages 655-73.
- Canova, F (2007)**, *Methods for applied macroeconomic research*, Princeton University Press.
- Chen, R and Scott, L (1993)**, ‘Maximum likelihood estimation for a multifactor equilibrium model of the term structure of interest rates’, *The Journal of Fixed Income*, December, pages 14-31.
- Christiano, L, Eichenbaum, M and Evans, C (1999)**, ‘Monetary-policy shocks: what have we learned and to what end?’, in Taylor, J and Woodford, M (eds), *Handbook of Macroeconomics*, Amsterdam:North-Holland.
- Clarida, R, Gali, J and Gertler, M (2000)**, ‘Monetary policy rules and macroeconomic stability: evidence and some theory’ *Quarterly Journal of Economics*, Vol. CXV, No. 1, pages 147-80.
- Dai, Q and Philippon, T (2004)**, ‘Government deficits and interest rates: a no-arbitrage structural VAR approach’, *manuscript*.
- Dai, Q and Singleton, K (2000)**, ‘Specification analysis of affine term structure models’, *Journal of Finance*, Vol. 55, pages 1,943-78.





- Duffee, G R (2002)**, ‘Term premia and interest rate forecasts in affine models’, *Journal of Finance*, Vol. 57, pages 405-43.
- Duffie, D and Kan, R (1996)**, ‘A yield-factor model of interest rates’, *Mathematical Finance* 6, pages 379-406.
- Ellingsen, T and Söderstrom, U (2004)**, ‘Why are long rates sensitive to monetary policy?’, *IGIER Working Paper no. 256*.
- Estrella, A and Hardouvelis, G A (1991)**, ‘The term structure as a predictor of real economic activity’, *Journal of Finance*, Vol. 46 (2), pages 555-76.
- Evans, C and Marshall, D (1998)**, ‘Monetary policy and the term structure of nominal interest rates: evidence and theory’, *Carnegie-Rochester Conference Series on Public Policy* 49, pages 53-111.
- Evans, C and Marshall, D (2001)**, ‘Economic determinants of the nominal treasury yield curve’, *unpublished manuscript*.
- Harvey, C R (1988)**, ‘The real term structure and consumption growth’, *Journal of Financial Economics*, Vol. 22, pages 97-103.
- Hördahl, P, Tristani, O and Vestin, D (2006)**, ‘A joint econometric model of macroeconomic and term structure dynamics’, *Journal of Econometrics*, Vol. 127 (1-2).
- Kilian, L (1998)**, ‘Small-sample confidence intervals for impulse response functions,’ *The Review of Economics and Statistics*, MIT Press, Vol. 80(2), pages 218-30.
- Lildholdt, P, Panigirtzoglou, N and Peacock, C (2007)**, ‘An affine macro-factor model of the UK yield curve’, *Bank of England Working Paper* 322.
- Rudebusch, G D, Swanson, E T and Wu, T (2006)**, ‘The bond yield “conundrum” from a macro-finance perspective’, *Federal Reserve Bank of San Francisco Working Paper* 2006-16.
- Rudebusch, G D and Wu, T (2008)**, ‘A macro-finance model of the term structure, monetary policy, and the economy’, *Economic Journal*, Vol. 118, pages 906-26.
- Shiller, R J (1979)**, ‘The volatility of long term interest rates and expectations models of the term structure’, *Journal of Political Economy*, Vol. 87, pages 1,190–219.
- Taylor, J B (1993)**, ‘Discretion versus policy rules in practice’, *Carnegie-Rochester Conference Series on Public Policy* 39, pages 195-214.

